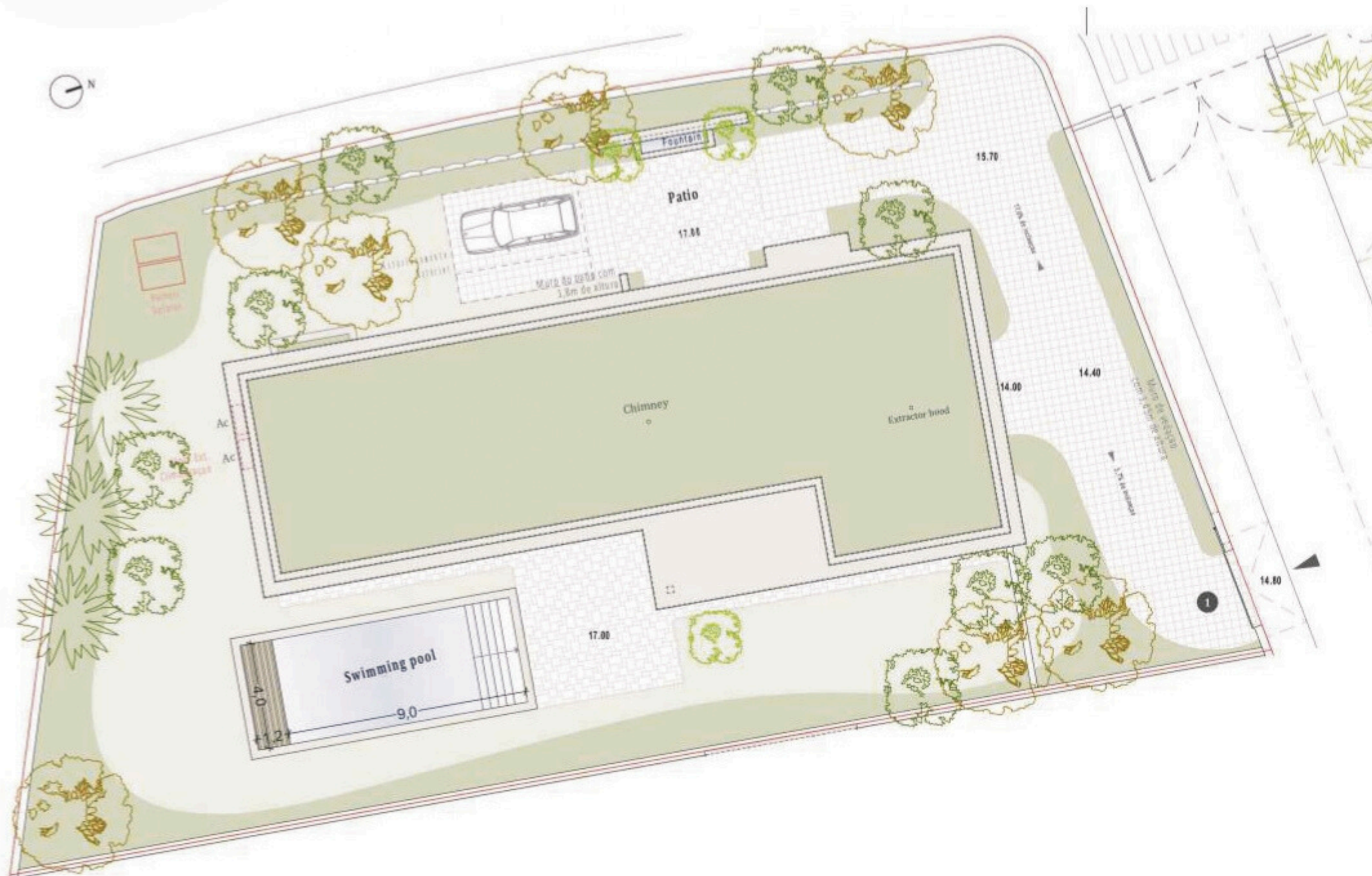
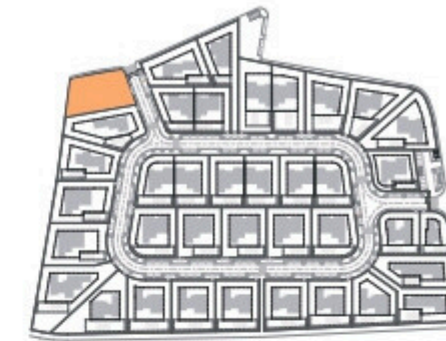


## SALES PLAN

VILLA N°01 DOUBLE STOREY

SITE PLAN



Planta de Arranjos Exteriores

Kitchen equipment is not contractual. Their position is indicative. Dimensions and areas are given subject to technical construction and execution requirements. The fallout from false ceilings, soffits and pipes are not systematically shown. The thickness of the insulation will be determined by the technical execution study and therefore the data in this plan are only indicative.

**TOTAL INTERIOR LIVING AREA 378.8 m<sup>2</sup>**

**GROUND FLOOR 188.5 m<sup>2</sup>**

Living	41 m <sup>2</sup>
Dining room et Kitchen	41.4 m <sup>2</sup>
Ensuite Bedroom 1	27.4 m <sup>2</sup>
Bedroom 1 Dressing	6.1 m <sup>2</sup>
Ensuite Bedroom 2	22.4 m <sup>2</sup>
Bedroom 2 Dressing	3.4 m <sup>2</sup>
Ensuite Bedroom 3	22.6 m <sup>2</sup>
Guest toilet	5.1 m <sup>2</sup>
Lobby Entrance Hall	9.3 m <sup>2</sup>
Hallway	9.8 m <sup>2</sup>

**BASEMENT 190.3 m<sup>2</sup>**

Hallway	17.9 m <sup>2</sup>
Stair Hall	15.1 m <sup>2</sup>
Laundry	12.5 m <sup>2</sup>
Gym, Hammam	54.1 m <sup>2</sup>
Wine Cellar	16.1 m <sup>2</sup>
Garage	48.9 m <sup>2</sup>
Technical room swim Pool	25.7 m <sup>2</sup>

**TOTAL EXTERIOR AREA 140.9 m<sup>2</sup>**

Patio/Fountain	17 m <sup>2</sup>
Covered terrace	18.2 m <sup>2</sup>
Pool Deck	56.6 m <sup>2</sup>
Swimming pool	49.1 m <sup>2</sup>

**TOTAL AREA 519.7 m<sup>2</sup>**

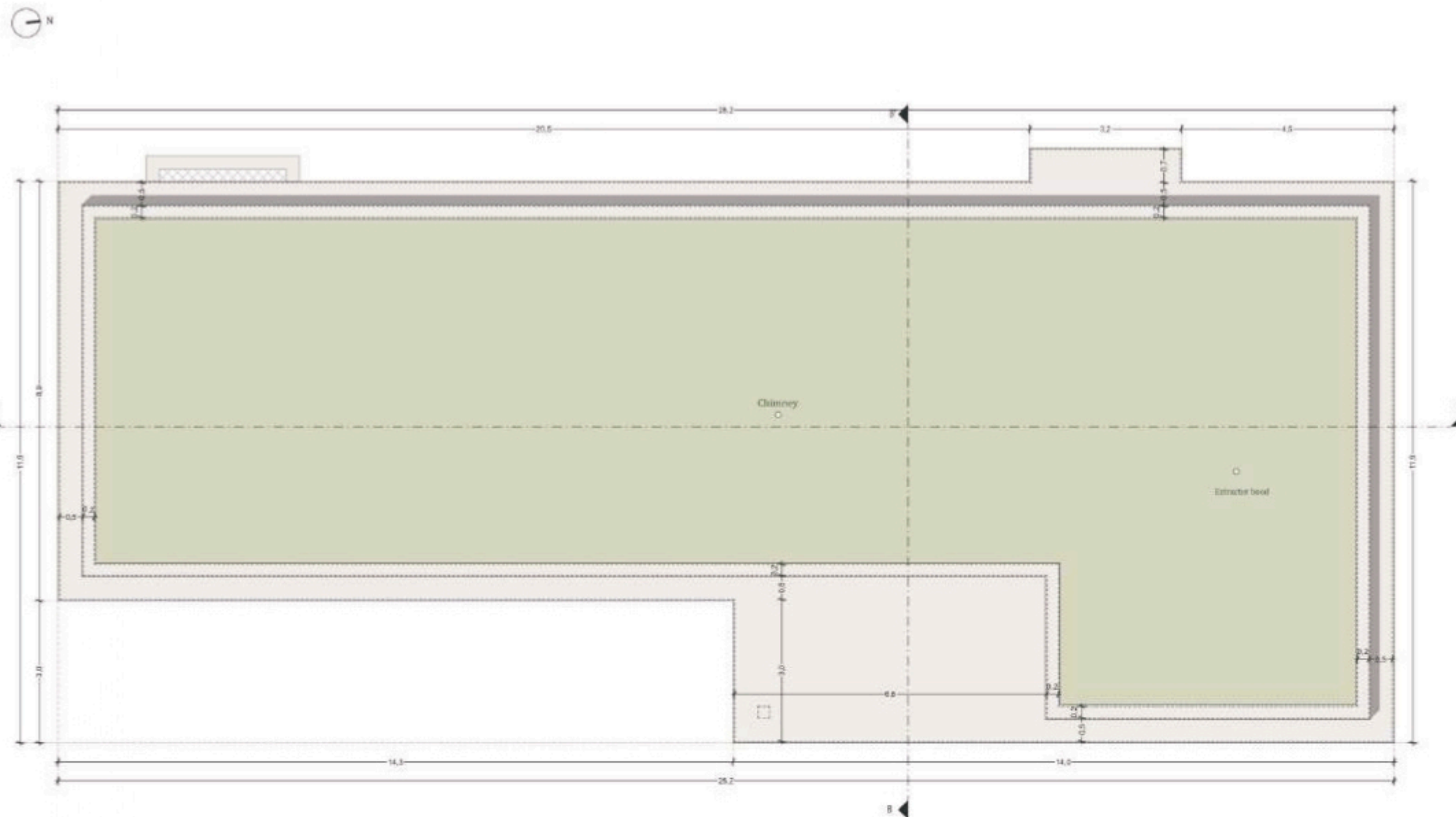
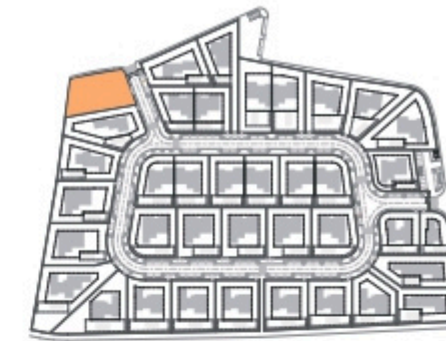
Plot of Land	1011 m <sup>2</sup>
Altimetry	17



# SALES PLAN

VILLA N°01 DOUBLE STOREY

FLOOR COVERING PLAN



ROOF PLAN

Kitchen equipment is not contractual. Their position is indicative. Dimensions and areas are given subject to technical construction and execution requirements. The fallout from false ceilings, soffits and pipes are not systematically shown. The thickness of the insulation will be determined by the technical execution study and therefore the data in this plan are only indicative.

**TOTAL INTERIOR LIVING AREA 378.8 m<sup>2</sup>**

**GROUND FLOOR 188.5 m<sup>2</sup>**

Living	41 m <sup>2</sup>
Dining room et Kitchen	41.4 m <sup>2</sup>
Ensuite Bedroom 1	27.4 m <sup>2</sup>
Bedroom 1 Dressing	6.1 m <sup>2</sup>
Ensuite Bedroom 2	22.4 m <sup>2</sup>
Bedroom 2 Dressing	3.4 m <sup>2</sup>
Ensuite Bedroom 3	22.6 m <sup>2</sup>
Guest toilet	5.1 m <sup>2</sup>
Lobby Entrance Hall	9.3 m <sup>2</sup>
Hallway	9.8 m <sup>2</sup>

**BASEMENT 190.3 m<sup>2</sup>**

Hallway	17.9 m <sup>2</sup>
Stair Hall	15.1 m <sup>2</sup>
Laundry	12.5 m <sup>2</sup>
Gym, Hammam	54.1 m <sup>2</sup>
Wine Cellar	16.1 m <sup>2</sup>
Garage	48.9 m <sup>2</sup>
Technical room swim Pool	25.7 m <sup>2</sup>

**TOTAL EXTERIOR AREA 140.9 m<sup>2</sup>**

Patio/Fountain	17 m <sup>2</sup>
Covered terrace	18.2 m <sup>2</sup>
Pool Deck	56.6 m <sup>2</sup>
Swimming pool	49.1 m <sup>2</sup>

**TOTAL AREA 519.7 m<sup>2</sup>**

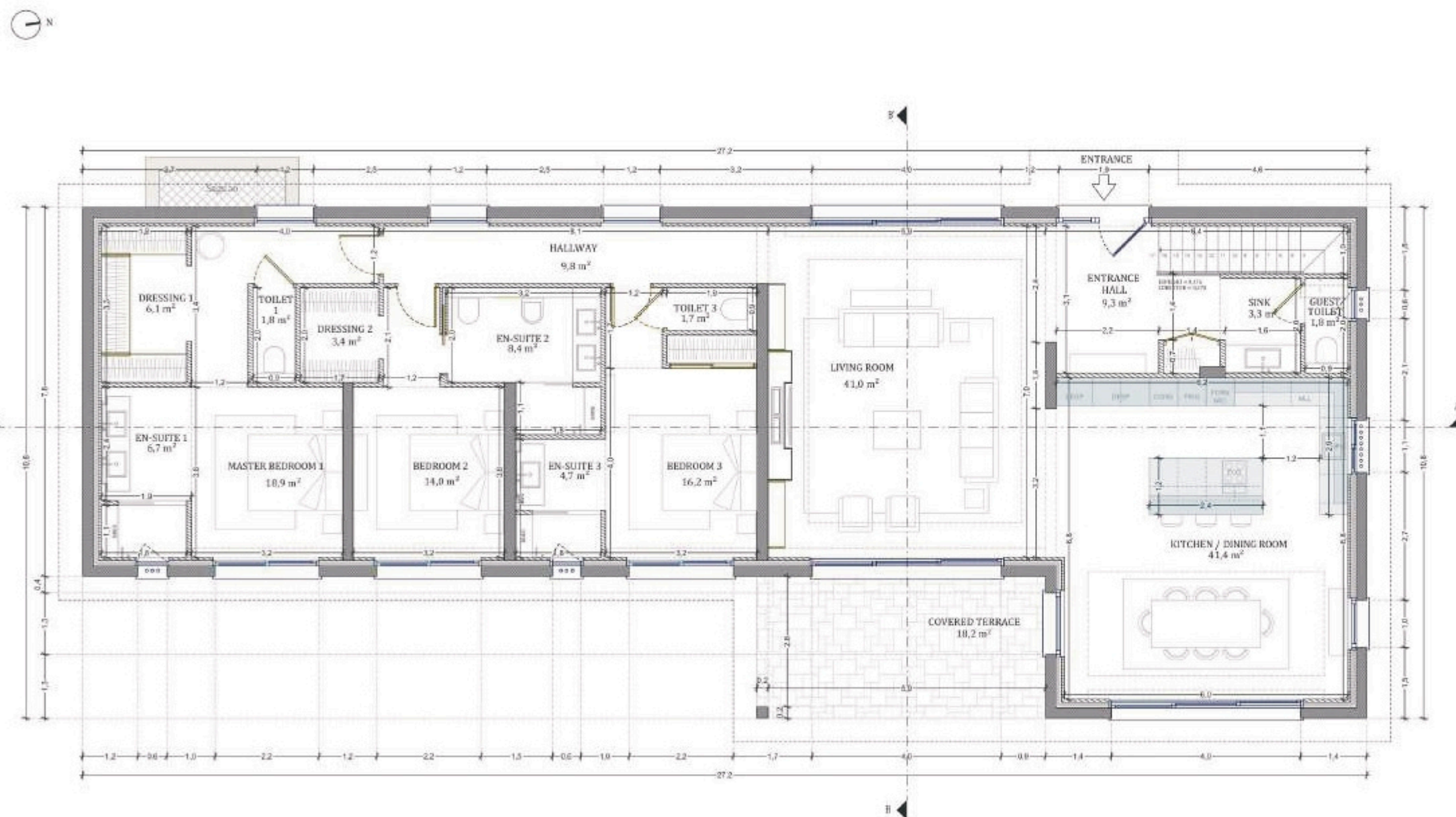
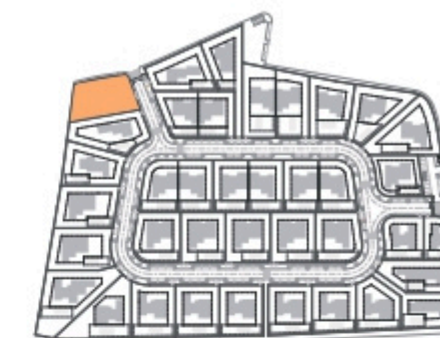
Plot of Land	1011 m <sup>2</sup>
Altimetry	17



# SALES PLAN

VILLA N°01 DOUBLE STOREY

GROUND FLOOR



GROUND FLOOR

Kitchen equipment is not contractual. Their position is indicative. Dimensions and areas are given subject to technical construction and execution requirements. The fallout from false ceilings, soffits and pipes are not systematically shown. The thickness of the insulation will be determined by the technical execution study and therefore the data in this plan are only indicative.

**TOTAL INTERIOR LIVING AREA 378.8 m<sup>2</sup>**

**GROUND FLOOR 188.5 m<sup>2</sup>**

Living	41 m <sup>2</sup>
Dining room et Kitchen	41.4 m <sup>2</sup>
Ensuite Bedroom 1	27.4 m <sup>2</sup>
Bedroom 1 Dressing	6.1 m <sup>2</sup>
Ensuite Bedroom 2	22.4 m <sup>2</sup>
Bedroom 2 Dressing	3.4 m <sup>2</sup>
Ensuite Bedroom 3	22.6 m <sup>2</sup>
Guest toilet	5.1 m <sup>2</sup>
Lobby Entrance Hall	9.3 m <sup>2</sup>
Hallway	9.8 m <sup>2</sup>

**BASEMENT 190.3 m<sup>2</sup>**

Hallway	17.9 m <sup>2</sup>
Stair Hall	15.1 m <sup>2</sup>
Laundry	12.5 m <sup>2</sup>
Gym, Hammam	54.1 m <sup>2</sup>
Wine Cellar	16.1 m <sup>2</sup>
Garage	48.9 m <sup>2</sup>
Technical room swim Pool	25.7 m <sup>2</sup>

**TOTAL EXTERIOR AREA 140.9 m<sup>2</sup>**

Patio/Fountain	17 m <sup>2</sup>
Covered terrace	18.2 m <sup>2</sup>
Pool Deck	56.6 m <sup>2</sup>
Swimming pool	49.1 m <sup>2</sup>

**TOTAL AREA 519.7 m<sup>2</sup>**

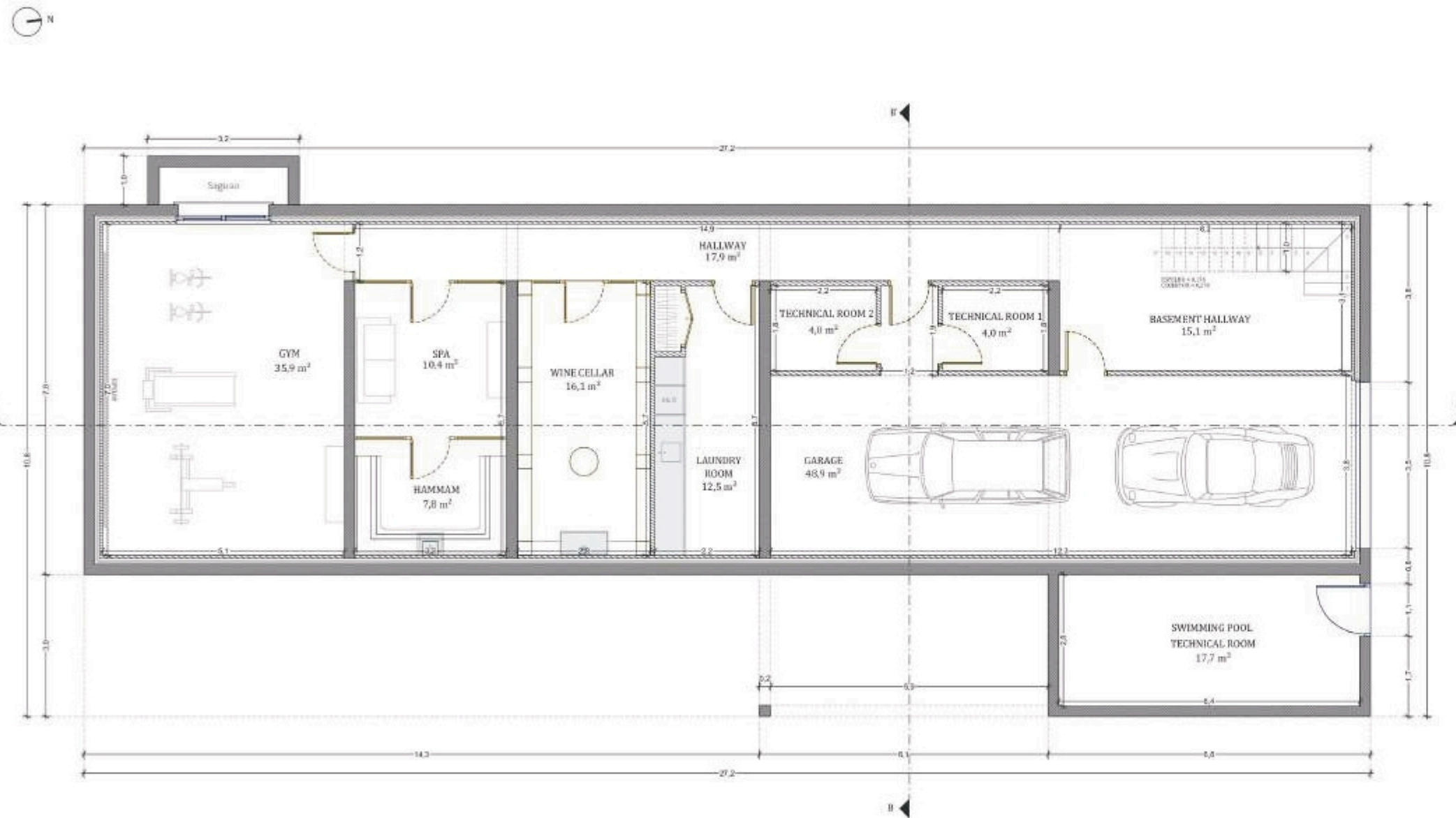
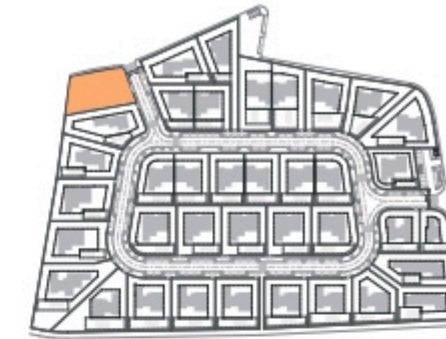
Plot of Land	1011 m <sup>2</sup>
Altimetry	17



# SALES PLAN

VILLA N°01 DOUBLE STOREY

BASEMENT



BASEMENT

Kitchen equipment is not contractual. Their position is indicative. Dimensions and areas are given subject to technical construction and execution requirements. The fallout from false ceilings, soffits and pipes are not systematically shown. The thickness of the insulation will be determined by the technical execution study and therefore the data in this plan are only indicative.

**TOTAL INTERIOR LIVING AREA 378.8 m<sup>2</sup>**

**GROUND FLOOR 188.5 m<sup>2</sup>**

Living	41 m <sup>2</sup>
Dining room et Kitchen	41.4 m <sup>2</sup>
Ensuite Bedroom 1	27.4 m <sup>2</sup>
Bedroom 1 Dressing	6.1 m <sup>2</sup>
Ensuite Bedroom 2	22.4 m <sup>2</sup>
Bedroom 2 Dressing	3.4 m <sup>2</sup>
Ensuite Bedroom 3	22.6 m <sup>2</sup>
Guest toilet	5.1 m <sup>2</sup>
Lobby Entrance Hall	9.3 m <sup>2</sup>
Hallway	9.8 m <sup>2</sup>

**BASEMENT 190.3 m<sup>2</sup>**

Hallway	17.9 m <sup>2</sup>
Stair Hall	15.1 m <sup>2</sup>
Laundry	12.5 m <sup>2</sup>
Gym, Hammam	54.1 m <sup>2</sup>
Wine Cellar	16.1 m <sup>2</sup>
Garage	48.9 m <sup>2</sup>
Technical room swim Pool	25.7 m <sup>2</sup>

**TOTAL EXTERIOR AREA 140.9 m<sup>2</sup>**

Patio/Fountain	17 m <sup>2</sup>
Covered terrace	18.2 m <sup>2</sup>
Pool Deck	56.6 m <sup>2</sup>
Swimming pool	49.1 m <sup>2</sup>

**TOTAL AREA 519.7 m<sup>2</sup>**

Plot of Land	1011 m <sup>2</sup>
Altimetry	17



SECTION AA'



SECTION BB'

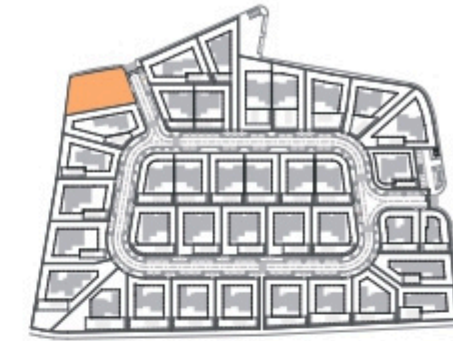
SECTION BB'

Kitchen equipment is not contractual. Their position is indicative. Dimensions and areas are given subject to technical construction and execution requirements. The fallout from false ceilings, soffits and pipes are not systematically shown. The thickness of the insulation will be determined by the technical execution study and therefore the data in this plan are only indicative.

## SALES PLAN

VILLA N°01 DOUBLE STOREY

SECTIONAL PLAN



**TOTAL INTERIOR LIVING AREA 378.8 m<sup>2</sup>**

**GROUND FLOOR 188.5 m<sup>2</sup>**

Living	41 m <sup>2</sup>
Dining room et Kitchen	41.4 m <sup>2</sup>
Ensuite Bedroom 1	27.4 m <sup>2</sup>
Bedroom 1 Dressing	6.1 m <sup>2</sup>
Ensuite Bedroom 2	22.4 m <sup>2</sup>
Bedroom 2 Dressing	3.4 m <sup>2</sup>
Ensuite Bedroom 3	22.6 m <sup>2</sup>
Guest toilet	5.1 m <sup>2</sup>
Lobby Entrance Hall	9.3 m <sup>2</sup>
Hallway	9.8 m <sup>2</sup>

**BASEMENT 190.3 m<sup>2</sup>**

Hallway	17.9 m <sup>2</sup>
Stair Hall	15.1 m <sup>2</sup>
Laundry	12.5 m <sup>2</sup>
Gym, Hammam	54.1 m <sup>2</sup>
Wine Cellar	16.1 m <sup>2</sup>
Garage	48.9 m <sup>2</sup>
Technical room swim Pool	25.7 m <sup>2</sup>

**TOTAL EXTERIOR AREA 140.9 m<sup>2</sup>**

Patio/Fountain	17 m <sup>2</sup>
Covered terrace	18.2 m <sup>2</sup>
Pool Deck	56.6 m <sup>2</sup>
Swimming pool	49.1 m <sup>2</sup>

**TOTAL AREA 519.7 m<sup>2</sup>**

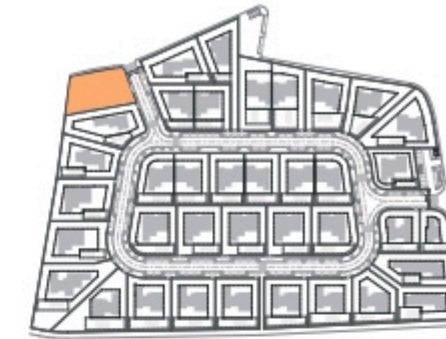
Plot of Land	1011 m <sup>2</sup>
Altimetry	17



# SALES PLAN

VILLA N°01 DOUBLE STOREY

ELEVATIONS



EAST



NORTH

Kitchen equipment is not contractual. Their position is indicative. Dimensions and areas are given subject to technical construction and execution requirements. The fallout from false ceilings, soffits and pipes are not systematically shown. The thickness of the insulation will be determined by the technical execution study and therefore the data in this plan are only indicative.

**TOTAL INTERIOR LIVING AREA 378.8 m<sup>2</sup>**

**GROUND FLOOR 188.5 m<sup>2</sup>**

Living	41 m <sup>2</sup>
Dining room et Kitchen	41.4 m <sup>2</sup>
Ensuite Bedroom 1	27.4 m <sup>2</sup>
Bedroom 1 Dressing	6.1 m <sup>2</sup>
Ensuite Bedroom 2	22.4 m <sup>2</sup>
Bedroom 2 Dressing	3.4 m <sup>2</sup>
Ensuite Bedroom 3	22.6 m <sup>2</sup>
Guest toilet	5.1 m <sup>2</sup>
Lobby Entrance Hall	9.3 m <sup>2</sup>
Hallway	9.8 m <sup>2</sup>

**BASEMENT 190.3 m<sup>2</sup>**

Hallway	17.9 m <sup>2</sup>
Stair Hall	15.1 m <sup>2</sup>
Laundry	12.5 m <sup>2</sup>
Gym, Hammam	54.1 m <sup>2</sup>
Wine Cellar	16.1 m <sup>2</sup>
Garage	48.9 m <sup>2</sup>
Technical room swim Pool	25.7 m <sup>2</sup>

**TOTAL EXTERIOR AREA 140.9 m<sup>2</sup>**

Patio/Fountain	17 m <sup>2</sup>
Covered terrace	18.2 m <sup>2</sup>
Pool Deck	56.6 m <sup>2</sup>
Swimming pool	49.1 m <sup>2</sup>

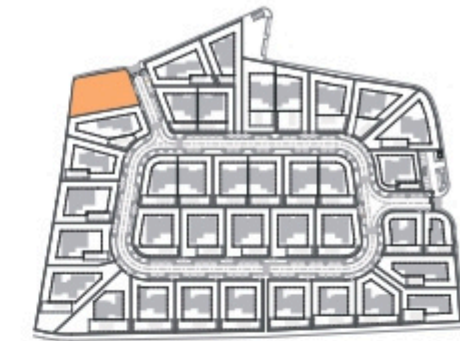
**TOTAL AREA 519.7 m<sup>2</sup>**

Plot of Land	1011 m <sup>2</sup>
Altimetry	17

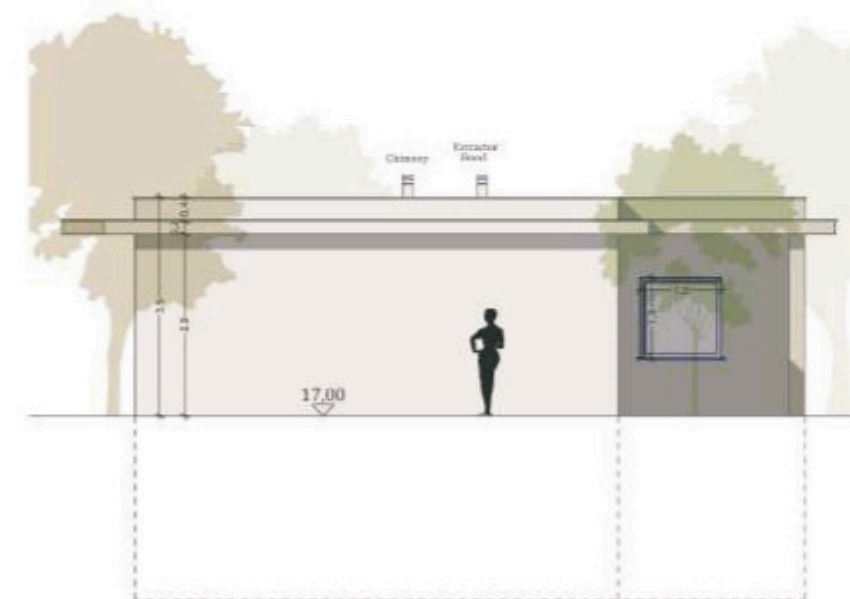
# SALES PLAN

VILLA N°01 DOUBLE STOREY

ELEVATIONS



WEST



SOUTH

Kitchen equipment is not contractual. Their position is indicative. Dimensions and areas are given subject to technical construction and execution requirements. The fallout from false ceilings, soffits and pipes are not systematically shown. The thickness of the insulation will be determined by the technical execution study and therefore the data in this plan are only indicative.

**TOTAL INTERIOR LIVING AREA 378.8 m<sup>2</sup>**

**GROUND FLOOR 188.5 m<sup>2</sup>**

Living	41 m <sup>2</sup>
Dining room et Kitchen	41.4 m <sup>2</sup>
Ensuite Bedroom 1	27.4 m <sup>2</sup>
Bedroom 1 Dressing	6.1 m <sup>2</sup>
Ensuite Bedroom 2	22.4 m <sup>2</sup>
Bedroom 2 Dressing	3.4 m <sup>2</sup>
Ensuite Bedroom 3	22.6 m <sup>2</sup>
Guest toilet	5.1 m <sup>2</sup>
Lobby Entrance Hall	9.3 m <sup>2</sup>
Hallway	9.8 m <sup>2</sup>

**BASEMENT 190.3 m<sup>2</sup>**

Hallway	17.9 m <sup>2</sup>
Stair Hall	15.1 m <sup>2</sup>
Laundry	12.5 m <sup>2</sup>
Gym, Hammam	54.1 m <sup>2</sup>
Wine Cellar	16.1 m <sup>2</sup>
Garage	48.9 m <sup>2</sup>
Technical room swim Pool	25.7 m <sup>2</sup>

**TOTAL EXTERIOR AREA 140.9 m<sup>2</sup>**

Patio/Fountain	17 m <sup>2</sup>
Covered terrace	18.2 m <sup>2</sup>
Pool Deck	56.6 m <sup>2</sup>
Swimming pool	49.1 m <sup>2</sup>

**TOTAL AREA 519.7 m<sup>2</sup>**

Plot of Land	1011 m <sup>2</sup>
Altimetry	17