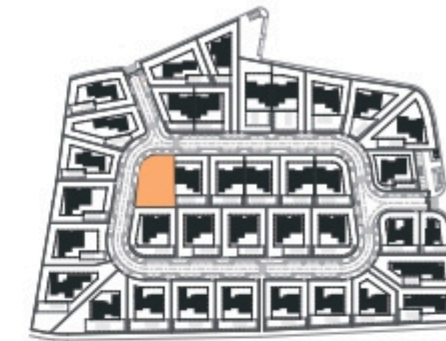


SALES PLAN

VILLA N°28 DOUBLE STOREY

SITE PLAN



Kitchen equipment is not contractual. Their position is indicative. Dimensions and areas are given subject to technical construction and execution requirements. The fallout from false ceilings, soffits and pipes are not systematically shown. The thickness of the insulation will be determined by the technical execution study and therefore the data in this plan are only indicative.

TOTAL INTERIOR LIVING AREA 356.9 m²

GROUND FLOOR 166.4 m²

Living	40.9 m ²
Dining room	17.2 m ²
Kitchen	14.4 m ²
Office	6.2 m ²
Storeroom Pantry	5.1 m ²
Ensuite Bedroom 1	20.5 m ²
Bedroom 1 Dressing	2.8 m ²
Ensuite Bedroom 2	26.7 m ²
Bedroom 2 Dressing	4.4 m ²
Ensuite Bedroom 3	20.8 m ²
Guest toilet	1.9 m ²
Lobby Entrance Hall	5.5 m ²

BASEMENT 190.5 m²

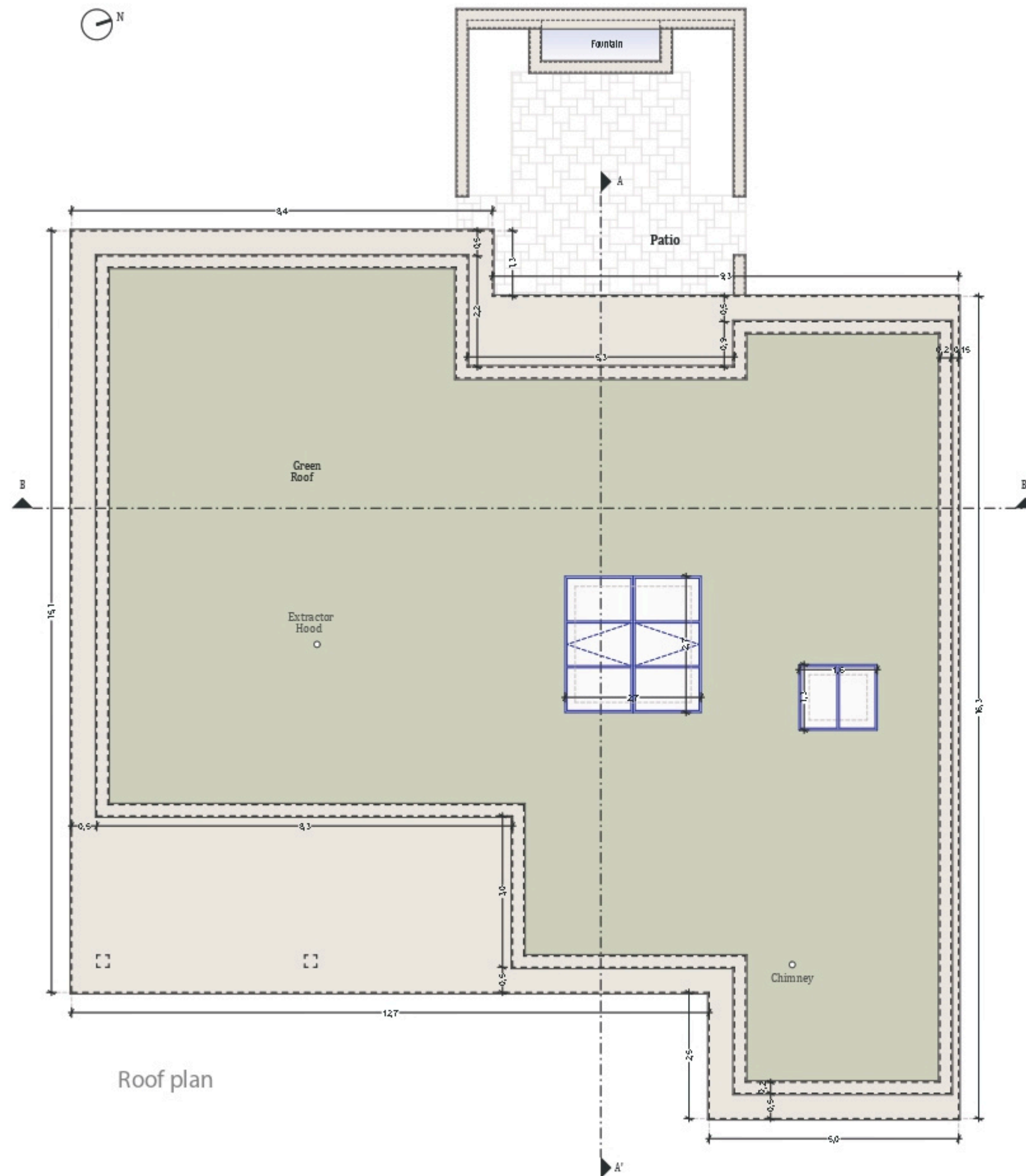
Ensuite Bedroom 4	18.3 m ²
Hallway	17.2 m ²
Laundry	6.9 m ²
Gym, Hammam	20.8 m ²
Wine Cellar	10.1 m ²
Garage	88.9 m ²
Technical rooms	28.3 m ²

TOTAL EXTERIOR AREA 101.1 m²

Patio/Fountain	35.7 m ²
Covered terrace	24.6 m ²
Pool Deck	4.8 m ²
Swimming pool	36 m ²

TOTAL AREA 458 m²

Plot of Land	789.7 m ²
Altimetry	15



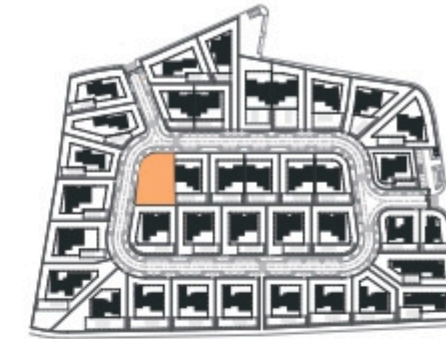
Roof plan

Kitchen equipment is not contractual. Their position is indicative. Dimensions and areas are given subject to technical construction and execution requirements. The fallout from false ceilings, soffits and pipes are not systematically shown. The thickness of the insulation will be determined by the technical execution study and therefore the data in this plan are only indicative.

SALES PLAN

VILLA N°28 DOUBLE STOREY

FLOOR COVERING PLAN



TOTAL INTERIOR LIVING AREA 356.9 m²

GROUND FLOOR 166.4 m²

Living	40.9 m ²
Dining room	17.2 m ²
Kitchen	14.4 m ²
Office	6.2 m ²
Storeroom Pantry	5.1 m ²
Ensuite Bedroom 1	20.5 m ²
Bedroom 1 Dressing	2.8 m ²
Ensuite Bedroom 2	26.7 m ²
Bedroom 2 Dressing	4.4 m ²
Ensuite Bedroom 3	20.8 m ²
Guest toilet	1.9 m ²
Lobby Entrance Hall	5.5 m ²

BASEMENT 190.5 m²

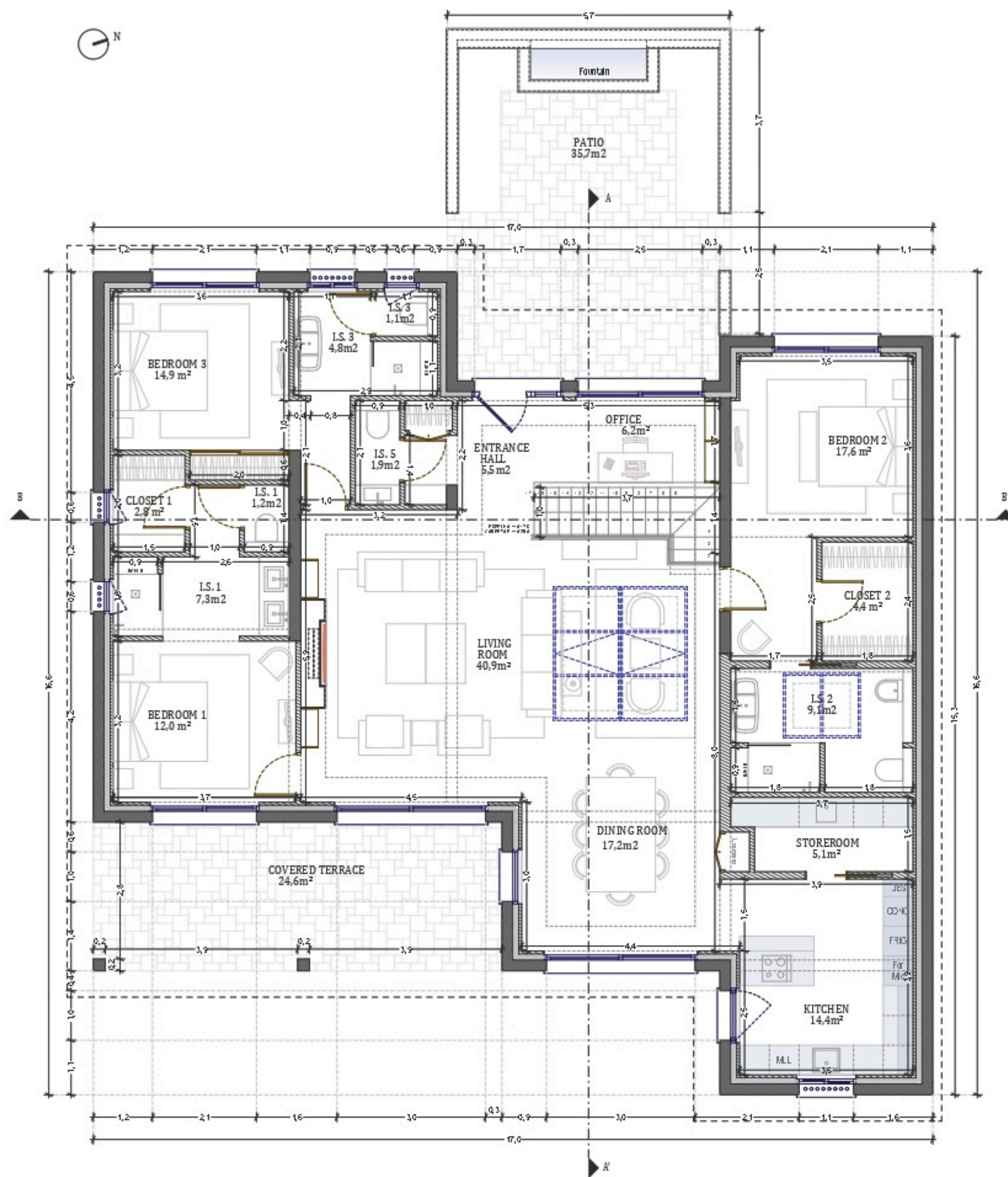
Ensuite Bedroom 4	18.3 m ²
Hallway	17.2 m ²
Laundry	6.9 m ²
Gym, Hammam	20.8 m ²
Wine Cellar	10.1 m ²
Garage	88.9 m ²
Technical rooms	28.3 m ²

TOTAL EXTERIOR AREA 101.1 m²

Patio/Fountain	35.7 m ²
Covered terrace	24.6 m ²
Pool Deck	4.8 m ²
Swimming pool	36 m ²

TOTAL AREA 458 m²

Plot of Land	789.7 m ²
Altimetry	15



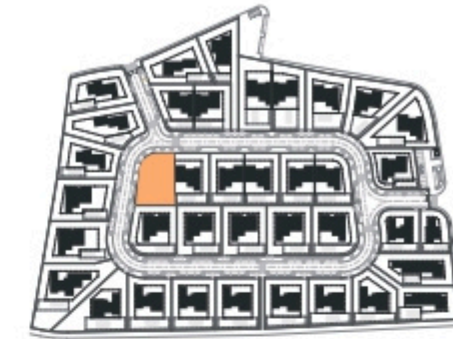
Ground floor plan

Kitchen equipment is not contractual. Their position is indicative. Dimensions and areas are given subject to technical construction and execution requirements. The fallout from false ceilings, soffits and pipes are not systematically shown. The thickness of the insulation will be determined by the technical execution study and therefore the data in this plan are only indicative.

SALES PLAN

VILLA N°28 DOUBLE STOREY

GROUND FLOOR



TOTAL INTERIOR LIVING AREA 356.9 m²

GROUND FLOOR 166.4 m²

Living	40.9 m ²
Dining room	17.2 m ²
Kitchen	14.4 m ²
Office	6.2 m ²
Storeroom Pantry	5.1 m ²
Ensuite Bedroom 1	20.5 m ²
Bedroom 1 Dressing	2.8 m ²
Ensuite Bedroom 2	26.7 m ²
Bedroom 2 Dressing	4.4 m ²
Ensuite Bedroom 3	20.8 m ²
Guest toilet	1.9 m ²
Lobby Entrance Hall	5.5 m ²

BASEMENT 190.5 m²

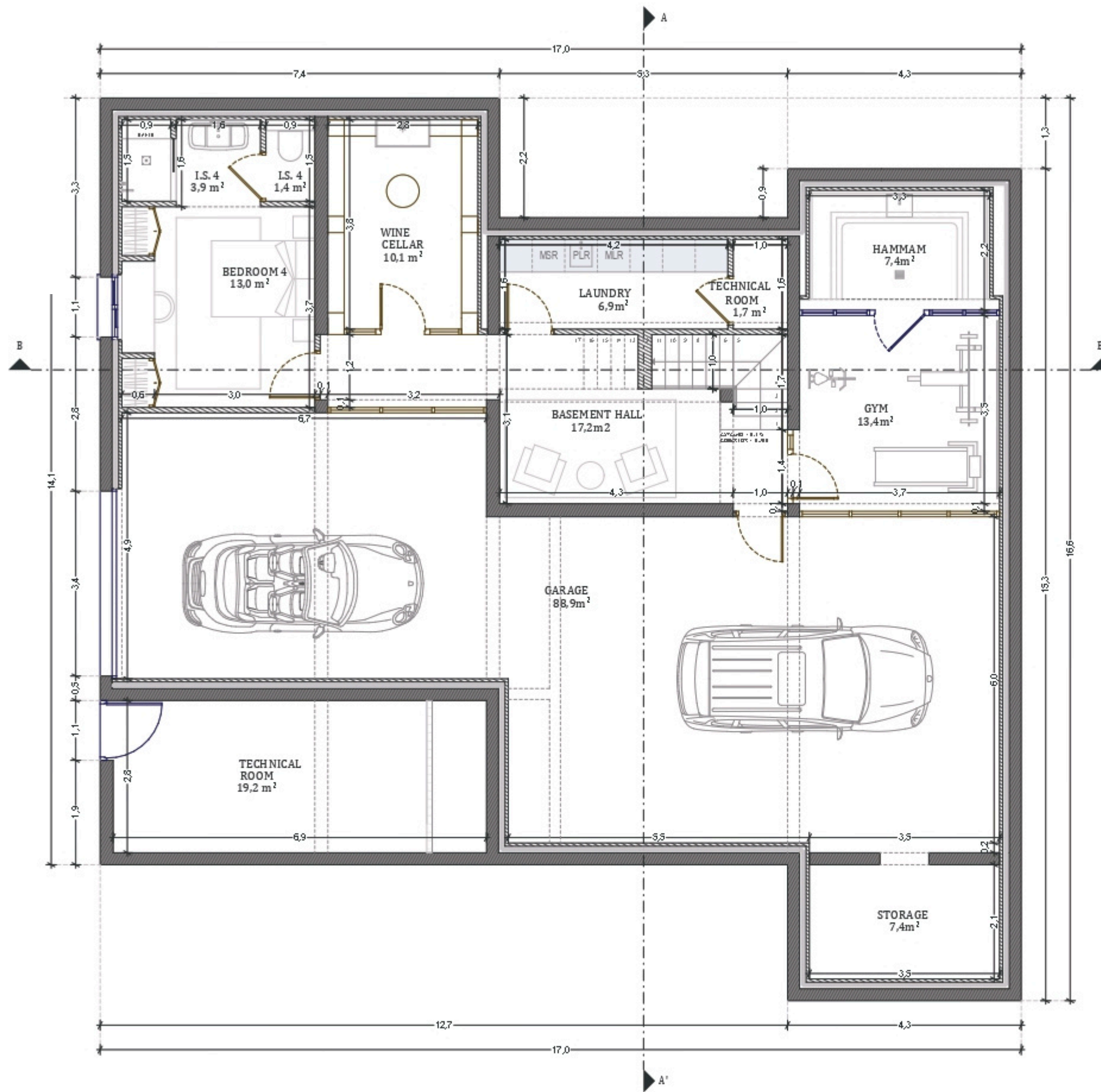
Ensuite Bedroom 4	18.3 m ²
Hallway	17.2 m ²
Laundry	6.9 m ²
Gym, Hammam	20.8 m ²
Wine Cellar	10.1 m ²
Garage	88.9 m ²
Technical rooms	28.3 m ²

TOTAL EXTERIOR AREA 101.1 m²

Patio/Fountain	35.7 m ²
Covered terrace	24.6 m ²
Pool Deck	4.8 m ²
Swimming pool	36 m ²

TOTAL AREA 458 m²

Plot of Land	789.7 m ²
Altimetry	15



Planta da Cave

Kitchen equipment is not contractual. Their position is indicative. Dimensions and areas are given subject to technical construction and execution requirements. The fallout from false ceilings, soffits and pipes are not systematically shown. The thickness of the insulation will be determined by the technical execution study and therefore the data in this plan are only indicative.

SALES PLAN

VILLA N°28 DOUBLE STOREY

BASEMENT



TOTAL INTERIOR LIVING AREA 356.9 m²

GROUND FLOOR 166.4 m²

Living	40.9 m ²
Dining room	17.2 m ²
Kitchen	14.4 m ²
Office	6.2 m ²
Storeroom Pantry	5.1 m ²
Ensuite Bedroom 1	20.5 m ²
Bedroom 1 Dressing	2.8 m ²
Ensuite Bedroom 2	26.7 m ²
Bedroom 2 Dressing	4.4 m ²
Ensuite Bedroom 3	20.8 m ²
Guest toilet	1.9 m ²
Lobby Entrance Hall	5.5 m ²

BASEMENT 190.5 m²

Ensuite Bedroom 4	18.3 m ²
Hallway	17.2 m ²
Laundry	6.9 m ²
Gym, Hammam	20.8 m ²
Wine Cellar	10.1 m ²
Garage	88.9 m ²
Technical rooms	28.3 m ²

TOTAL EXTERIOR AREA 101.1 m²

Patio/Fountain	35.7 m ²
Covered terrace	24.6 m ²
Pool Deck	4.8 m ²
Swimming pool	36 m ²

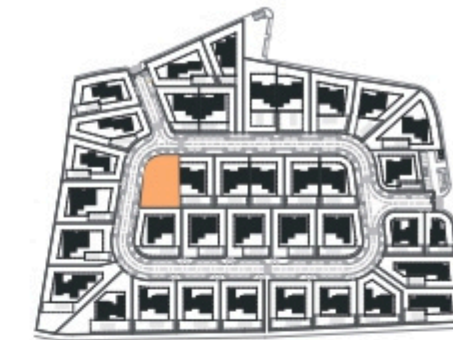
TOTAL AREA 458 m²

Plot of Land	789.7 m ²
Altimetry	15

SALES PLAN

VILLA N°28 DOUBLE STOREY

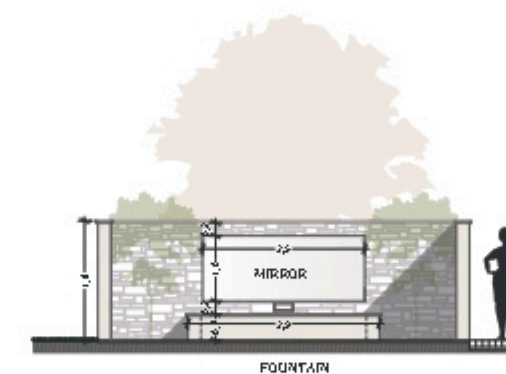
SECTIONAL PLAN



Cut AA'



Cut BB'



Cut - Patio

Kitchen equipment is not contractual. Their position is indicative. Dimensions and areas are given subject to technical construction and execution requirements. The fallout from false ceilings, soffits and pipes are not systematically shown. The thickness of the insulation will be determined by the technical execution study and therefore the data in this plan are only indicative.

TOTAL INTERIOR LIVING AREA 356.9 m²

GROUND FLOOR 166.4 m²

Living	40.9 m ²
Dining room	17.2 m ²
Kitchen	14.4 m ²
Office	6.2 m ²
Storeroom Pantry	5.1 m ²
Ensuite Bedroom 1	20.5 m ²
Bedroom 1 Dressing	2.8 m ²
Ensuite Bedroom 2	26.7 m ²
Bedroom 2 Dressing	4.4 m ²
Ensuite Bedroom 3	20.8 m ²
Guest toilet	1.9 m ²
Lobby Entrance Hall	5.5 m ²

BASEMENT 190.5 m²

Ensuite Bedroom 4	18.3 m ²
Hallway	17.2 m ²
Laundry	6.9 m ²
Gym, Hammam	20.8 m ²
Wine Cellar	10.1 m ²
Garage	88.9 m ²
Technical rooms	28.3 m ²

TOTAL EXTERIOR AREA 101.1 m²

Patio/Fountain	35.7 m ²
Covered terrace	24.6 m ²
Pool Deck	4.8 m ²
Swimming pool	36 m ²

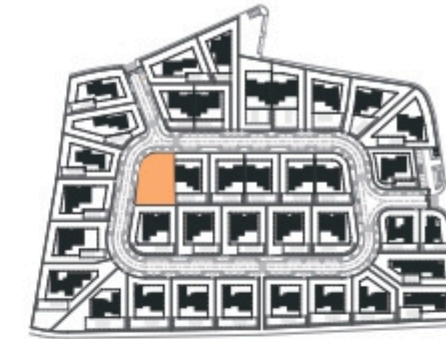
TOTAL AREA 458 m²

Plot of Land	789.7 m ²
Altimetry	15

SALES PLAN

VILLA N°28 DOUBLE STOREY

ELEVATIONS



South elevation



East elevation

Kitchen equipment is not contractual. Their position is indicative. Dimensions and areas are given subject to technical construction and execution requirements. The fallout from false ceilings, soffits and pipes are not systematically shown. The thickness of the insulation will be determined by the technical execution study and therefore the data in this plan are only indicative.

TOTAL INTERIOR LIVING AREA 356.9 m²

GROUND FLOOR 166.4 m²

Living	40.9 m ²
Dining room	17.2 m ²
Kitchen	14.4 m ²
Office	6.2 m ²
Storeroom Pantry	5.1 m ²
Ensuite Bedroom 1	20.5 m ²
Bedroom 1 Dressing	2.8 m ²
Ensuite Bedroom 2	26.7 m ²
Bedroom 2 Dressing	4.4 m ²
Ensuite Bedroom 3	20.8 m ²
Guest toilet	1.9 m ²
Lobby Entrance Hall	5.5 m ²

BASEMENT 190.5 m²

Ensuite Bedroom 4	18.3 m ²
Hallway	17.2 m ²
Laundry	6.9 m ²
Gym, Hammam	20.8 m ²
Wine Cellar	10.1 m ²
Garage	88.9 m ²
Technical rooms	28.3 m ²

TOTAL EXTERIOR AREA 101.1 m²

Patio/Fountain	35.7 m ²
Covered terrace	24.6 m ²
Pool Deck	4.8 m ²
Swimming pool	36 m ²

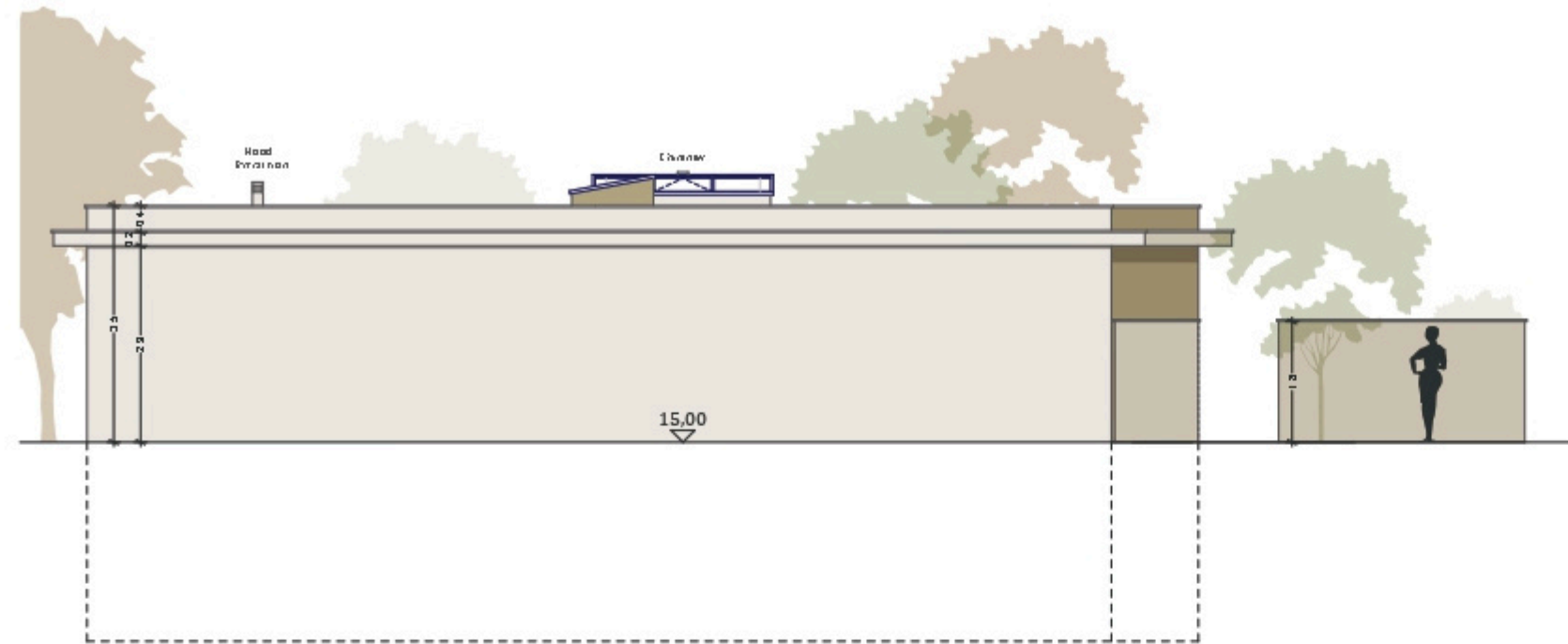
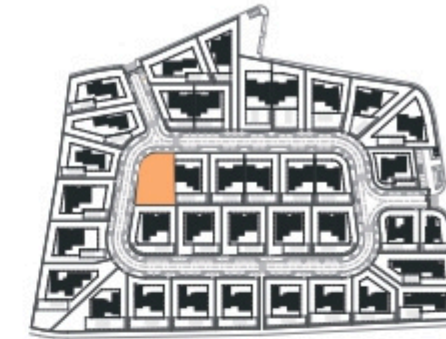
TOTAL AREA 458 m²

Plot of Land	789.7 m ²
Altimetry	15

SALES PLAN

VILLA N°28 DOUBLE STOREY

ELEVATIONS



North elevation



West elevation

Kitchen equipment is not contractual. Their position is indicative. Dimensions and areas are given subject to technical construction and execution requirements. The fallout from false ceilings, soffits and pipes are not systematically shown. The thickness of the insulation will be determined by the technical execution study and therefore the data in this plan are only indicative.

TOTAL INTERIOR LIVING AREA 356.9 m²

GROUND FLOOR 166.4 m²

Living	40.9 m ²
Dining room	17.2 m ²
Kitchen	14.4 m ²
Office	6.2 m ²
Storeroom Pantry	5.1 m ²
Ensuite Bedroom 1	20.5 m ²
Bedroom 1 Dressing	2.8 m ²
Ensuite Bedroom 2	26.7 m ²
Bedroom 2 Dressing	4.4 m ²
Ensuite Bedroom 3	20.8 m ²
Guest toilet	1.9 m ²
Lobby Entrance Hall	5.5 m ²

BASEMENT 190.5 m²

Ensuite Bedroom 4	18.3 m ²
Hallway	17.2 m ²
Laundry	6.9 m ²
Gym, Hammam	20.8 m ²
Wine Cellar	10.1 m ²
Garage	88.9 m ²
Technical rooms	28.3 m ²

TOTAL EXTERIOR AREA 101.1 m²

Patio/Fountain	35.7 m ²
Covered terrace	24.6 m ²
Pool Deck	4.8 m ²
Swimming pool	36 m ²

TOTAL AREA 458 m²

Plot of Land	789.7 m ²
Altimetry	15