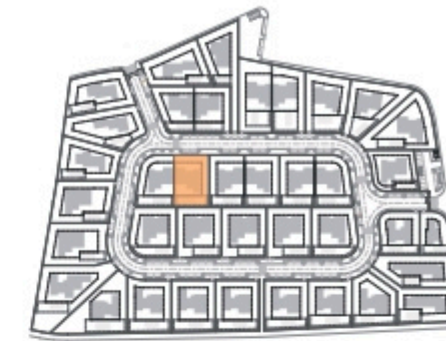


SALES PLAN

VILLA N°29 DOUBLE STOREY

SITE PLAN



TOTAL INTERIOR LIVING AREA 356.9 m²

GROUND FLOOR 166.4 m²

Living	40.9 m ²
Dining room	17.2 m ²
Kitchen	14.4 m ²
Office	6.2 m ²
Storeroom	5.1 m ²
Ensuite Bedroom 1	20.5 m ²
Ensuite Bedroom 2	26.7 m ²
Dressing Ensuite Bedroom 1	2.8 m ²
Ensuite Bedroom 3	20.8 m ²
Dressing Ensuite Bedroom 3	4.4 m ²
Guest toilet	1.9 m ²
Lobby, Hallway	5.5 m ²

BASEMENT 190.5 m²

Ensuite Bedroom 4	18.3 m ²
Corridor	17.2 m ²
Laundry	6.9 m ²
Gym, Hammam	20.8 m ²
Wine Cellar	10.1 m ²
Garage	88.9 m ²
Technical rooms	28.3 m ²

TOTAL EXTERIOR AREA 88.1 m²

Patio/Fountain	22.7 m ²
Covered terrace	24.6 m ²
Pool Deck	4.8 m ²
Swimming pool	36 m ²

TOTAL AREA 445 m²

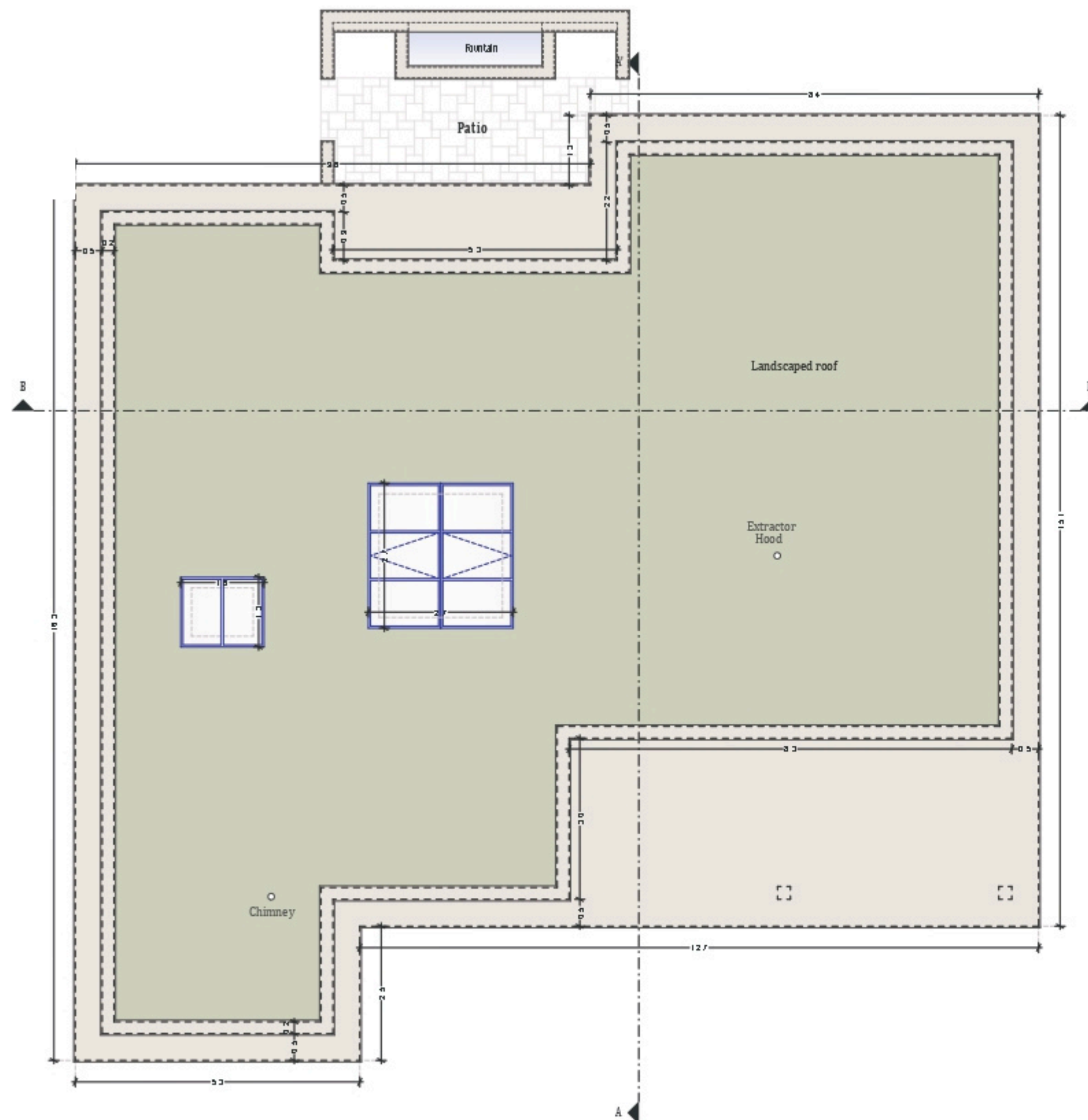
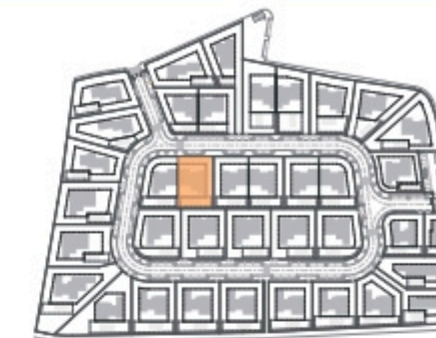
Plot of Land	791.3 m ²
Altimetry	15,75

Kitchen equipment is not contractual. Their position is indicative. Dimensions and areas are given subject to technical construction and execution requirements. The fallout from false ceilings, soffits and pipes are not systematically shown. The thickness of the insulation will be determined by the technical execution study and therefore the data in this plan are only indicative.

SALES PLAN

VILLA N°29 DOUBLE STOREY

ROOF PLAN



Roof plan

Kitchen equipment is not contractual. Their position is indicative. Dimensions and areas are given subject to technical construction and execution requirements. The fallout from false ceilings, soffits and pipes are not systematically shown. The thickness of the insulation will be determined by the technical execution study and therefore the data in this plan are only indicative.

TOTAL INTERIOR LIVING AREA 356.9 m²

GROUND FLOOR 166.4 m²

Living	40.9 m ²
Dining room	17.2 m ²
Kitchen	14.4 m ²
Office	6.2 m ²
Storeroom	5.1 m ²
Ensuite Bedroom 1	20.5 m ²
Ensuite Bedroom 2	26.7 m ²
Dressing Ensuite Bedroom 1	2.8 m ²
Ensuite Bedroom 3	20.8 m ²
Dressing Ensuite Bedroom 3	4.4 m ²
Guest toilet	1.9 m ²
Lobby, Hallway	5.5 m ²

BASEMENT 190.5 m²

Ensuite Bedroom 4	18.3 m ²
Corridor	17.2 m ²
Laundry	6.9 m ²
Gym, Hammam	20.8 m ²
Wine Cellar	10.1 m ²
Garage	88.9 m ²
Technical rooms	28.3 m ²

TOTAL EXTERIOR AREA 88.1 m²

Patio/Fountain	22.7 m ²
Covered terrace	24.6 m ²
Pool Deck	4.8 m ²
Swimming pool	36 m ²

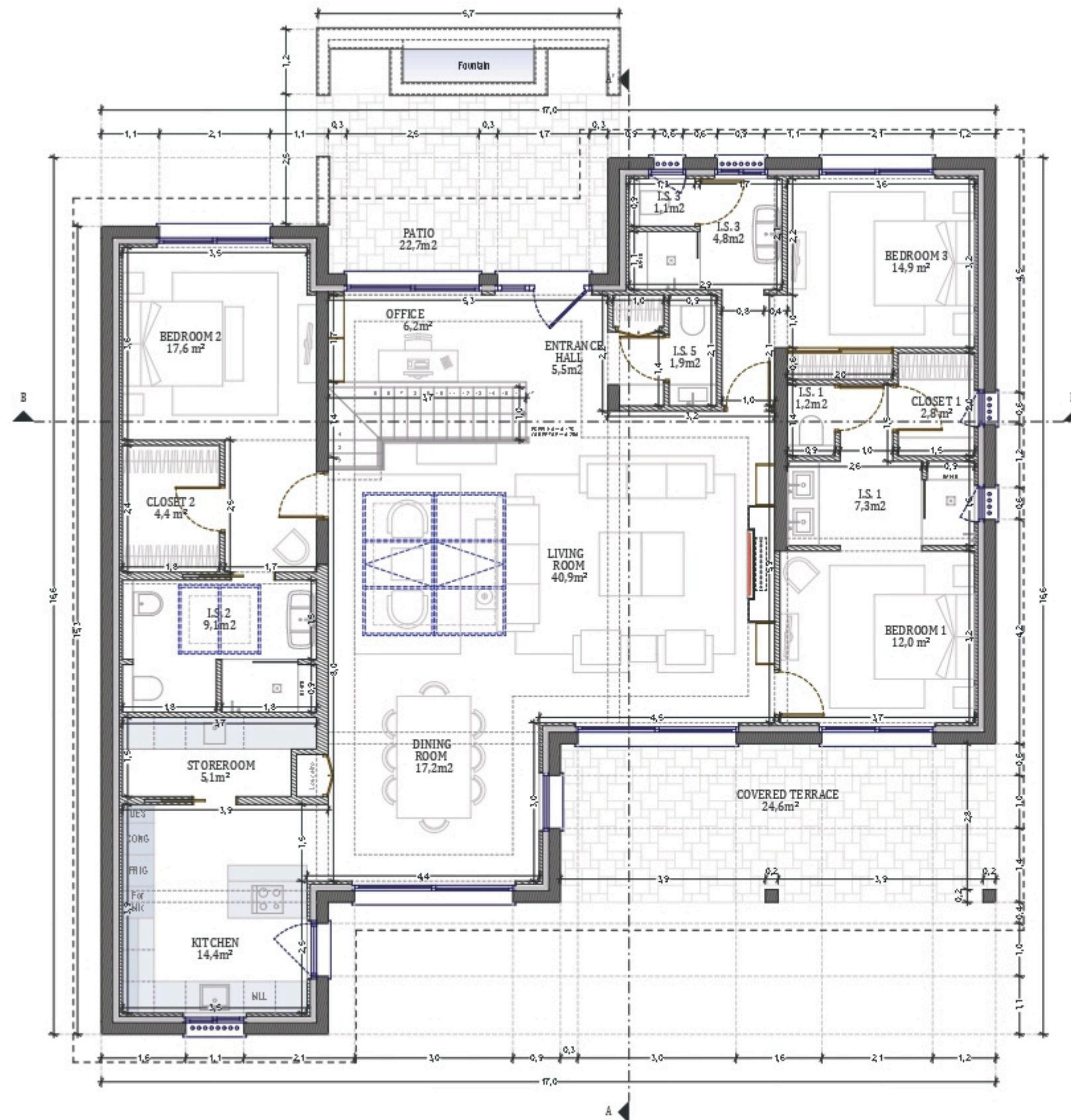
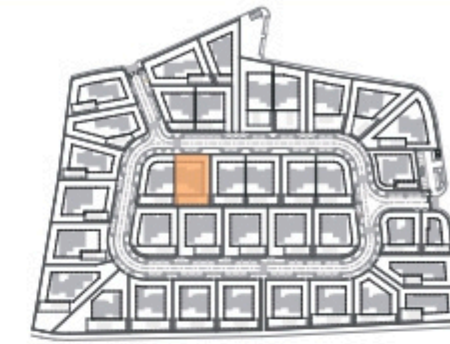
TOTAL AREA 445 m²

Plot of Land	791.3 m ²
Altimetry	15,75

SALES PLAN

VILLA N°29 DOUBLE STOREY

GROUND FLOOR



Ground floor plan

Kitchen equipment is not contractual. Their position is indicative. Dimensions and areas are given subject to technical construction and execution requirements. The fallout from false ceilings, soffits and pipes are not systematically shown. The thickness of the insulation will be determined by the technical execution study and therefore the data in this plan are only indicative.

TOTAL INTERIOR LIVING AREA 356.9 m²

GROUND FLOOR 166.4 m²

Living	40.9 m ²
Dining room	17.2 m ²
Kitchen	14.4 m ²
Office	6.2 m ²
Storeroom	5.1 m ²
Ensuite Bedroom 1	20.5 m ²
Ensuite Bedroom 2	26.7 m ²
Dressing Ensuite Bedroom 1	2.8 m ²
Ensuite Bedroom 3	20.8 m ²
Dressing Ensuite Bedroom 3	4.4 m ²
Guest toilet	1.9 m ²
Lobby, Hallway	5.5 m ²

BASEMENT 190.5 m²

Ensuite Bedroom 4	18.3 m ²
Corridor	17.2 m ²
Laundry	6.9 m ²
Gym, Hammam	20.8 m ²
Wine Cellar	10.1 m ²
Garage	88.9 m ²
Technical rooms	28.3 m ²

TOTAL EXTERIOR AREA 88.1 m²

Patio/Fountain	22.7 m ²
Covered terrace	24.6 m ²
Pool Deck	4.8 m ²
Swimming pool	36 m ²

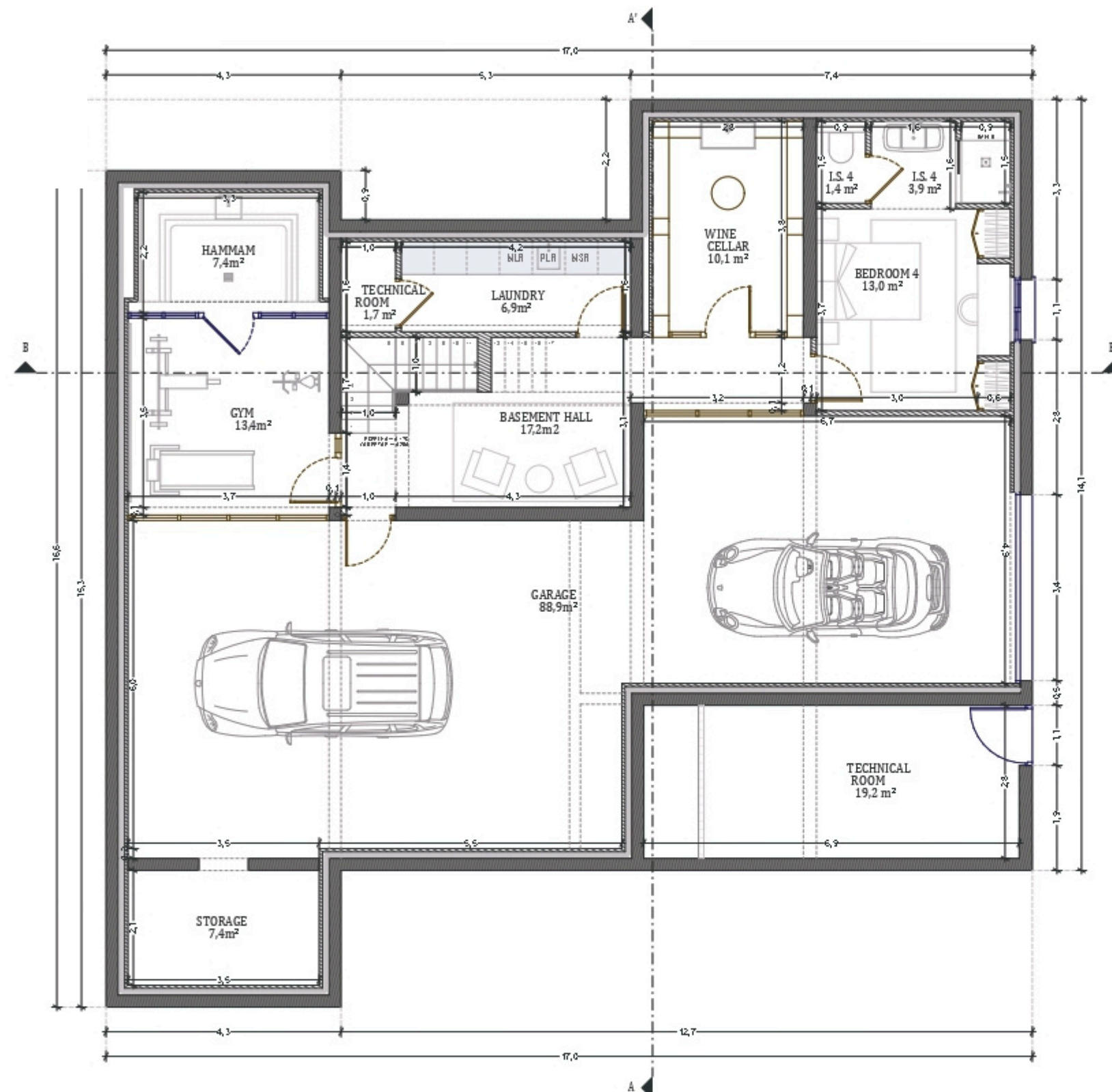
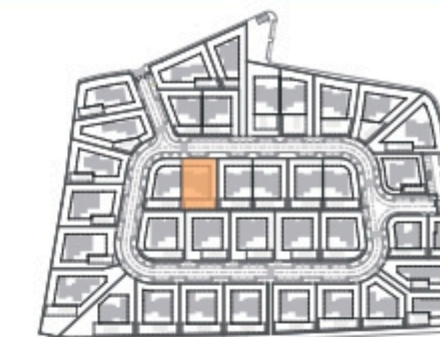
TOTAL AREA 445 m²

Plot of Land	791.3 m ²
Altimetry	15,75

SALES PLAN

VILLA Nº29 DOUBLE STOREY

BASEMENT



Planta da Cave

Kitchen equipment is not contractual. Their position is indicative. Dimensions and areas are given subject to technical construction and execution requirements. The fallout from false ceilings, soffits and pipes are not systematically shown. The thickness of the insulation will be determined by the technical execution study and therefore the data in this plan are only indicative.

TOTAL INTERIOR LIVING AREA 356.9 m²

GROUND FLOOR 166.4 m²

Living	40.9 m ²
Dining room	17.2 m ²
Kitchen	14.4 m ²
Office	6.2 m ²
Storeroom	5.1 m ²
Ensuite Bedroom 1	20.5 m ²
Ensuite Bedroom 2	26.7 m ²
Dressing Ensuite Bedroom 1	2.8 m ²
Ensuite Bedroom 3	20.8 m ²
Dressing Ensuite Bedroom 3	4.4 m ²
Guest toilet	1.9 m ²
Lobby, Hallway	5.5 m ²

BASEMENT 190.5 m²

Ensuite Bedroom 4	18.3 m ²
Corridor	17.2 m ²
Laundry	6.9 m ²
Gym, Hammam	20.8 m ²
Wine Cellar	10.1 m ²
Garage	88.9 m ²
Technical rooms	28.3 m ²

TOTAL EXTERIOR AREA 88.1 m²

Patio/Fountain	22.7 m ²
Covered terrace	24.6 m ²
Pool Deck	4.8 m ²
Swimming pool	36 m ²

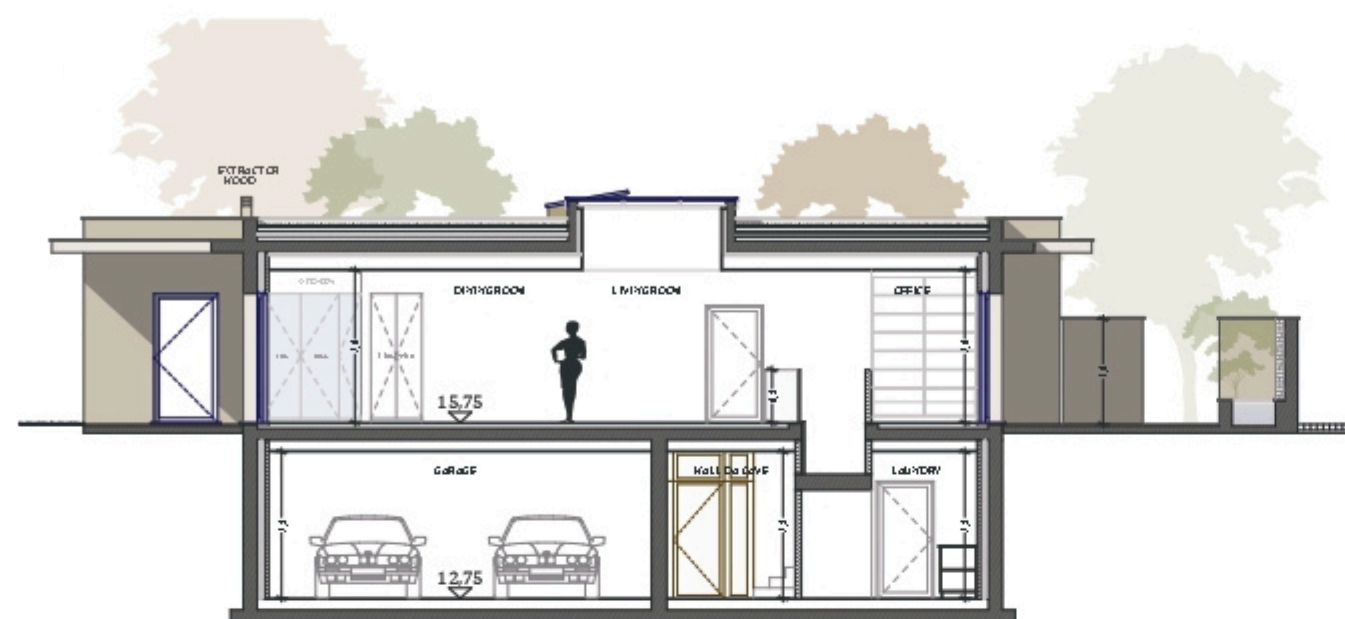
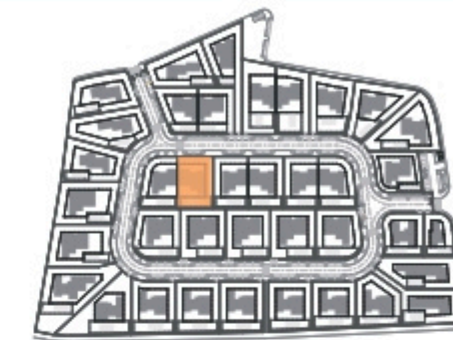
TOTAL AREA 445 m²

Plot of Land	791.3 m ²
Altimetry	15,75

SALES PLAN

VILLA N°29 DOUBLE STOREY

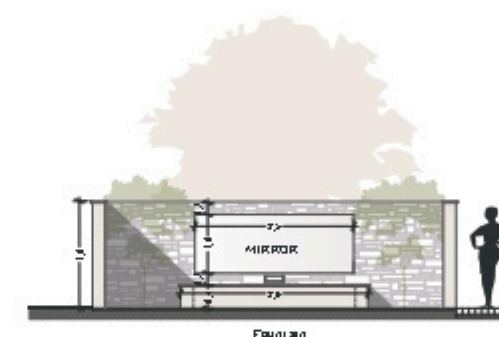
SECTIONAL PLAN



Cut AA'



Cut BB'



Cut - Patio

Kitchen equipment is not contractual. Their position is indicative. Dimensions and areas are given subject to technical construction and execution requirements. The fallout from false ceilings, soffits and pipes are not systematically shown. The thickness of the insulation will be determined by the technical execution study and therefore the data in this plan are only indicative.

TOTAL INTERIOR LIVING AREA 356.9 m²

GROUND FLOOR 166.4 m²

Living	40.9 m ²
Dining room	17.2 m ²
Kitchen	14.4 m ²
Office	6.2 m ²
Storeroom	5.1 m ²
Ensuite Bedroom 1	20.5 m ²
Ensuite Bedroom 2	26.7 m ²
Dressing Ensuite Bedroom 1	2.8 m ²
Ensuite Bedroom 3	20.8 m ²
Dressing Ensuite Bedroom 3	4.4 m ²
Guest toilet	1.9 m ²
Lobby, Hallway	5.5 m ²

BASEMENT 190.5 m²

Ensuite Bedroom 4	18.3 m ²
Corridor	17.2 m ²
Laundry	6.9 m ²
Gym, Hammam	20.8 m ²
Wine Cellar	10.1 m ²
Garage	88.9 m ²
Technical rooms	28.3 m ²

TOTAL EXTERIOR AREA 88.1 m²

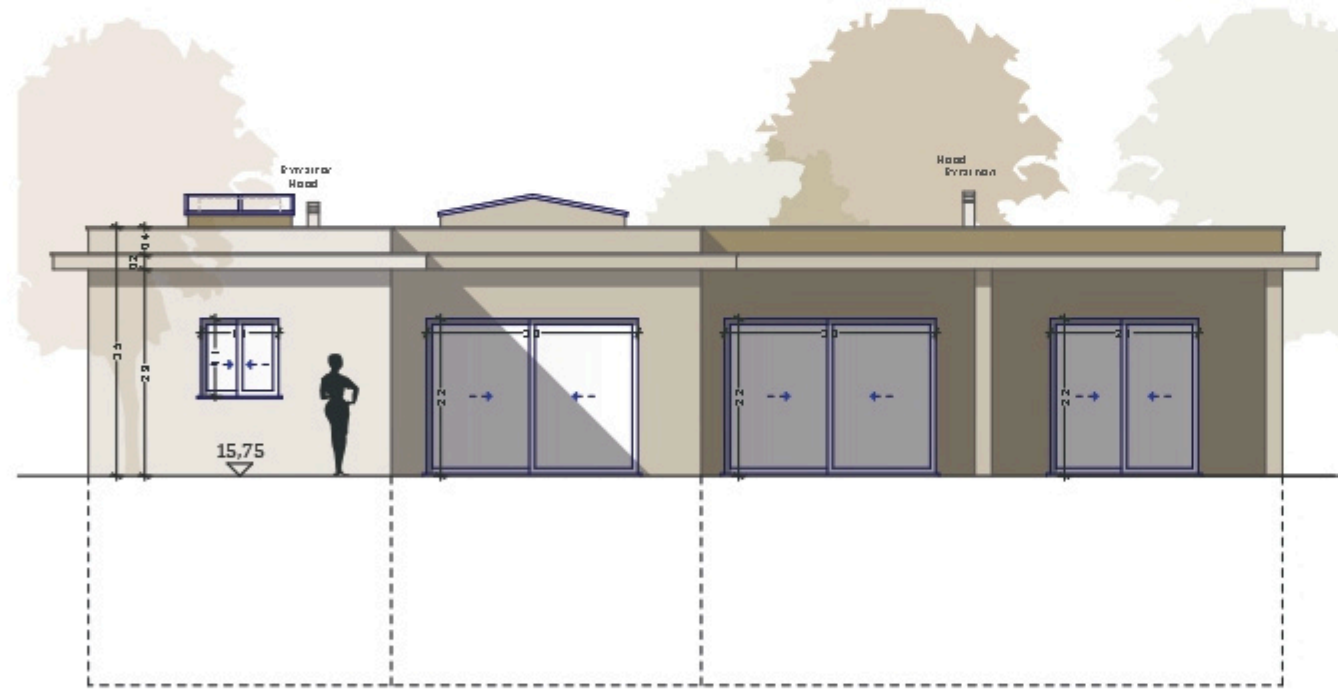
Patio/Fountain	22.7 m ²
Covered terrace	24.6 m ²
Pool Deck	4.8 m ²
Swimming pool	36 m ²

TOTAL AREA 445 m²

Plot of Land	791.3 m ²
Altimetry	15,75



South elevation



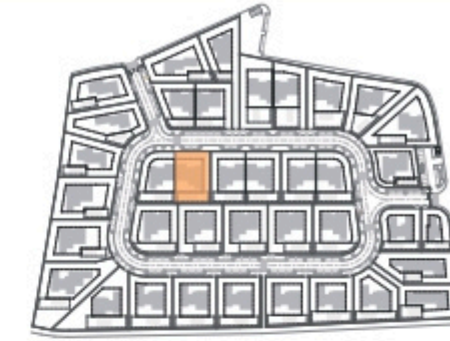
East elevation

Kitchen equipment is not contractual. Their position is indicative. Dimensions and areas are given subject to technical construction and execution requirements. The fallout from false ceilings, soffits and pipes are not systematically shown. The thickness of the insulation will be determined by the technical execution study and therefore the data in this plan are only indicative.

SALES PLAN

VILLA N°29 DOUBLE STOREY

ELEVATION



TOTAL INTERIOR LIVING AREA 356.9 m²

GROUND FLOOR 166.4 m²

Living	40.9 m ²
Dining room	17.2 m ²
Kitchen	14.4 m ²
Office	6.2 m ²
Storeroom	5.1 m ²
Ensuite Bedroom 1	20.5 m ²
Ensuite Bedroom 2	26.7 m ²
Dressing Ensuite Bedroom 1	2.8 m ²
Ensuite Bedroom 3	20.8 m ²
Dressing Ensuite Bedroom 3	4.4 m ²
Guest toilet	1.9 m ²
Lobby, Hallway	5.5 m ²

BASEMENT 190.5 m²

Ensuite Bedroom 4	18.3 m ²
Corridor	17.2 m ²
Laundry	6.9 m ²
Gym, Hammam	20.8 m ²
Wine Cellar	10.1 m ²
Garage	88.9 m ²
Technical rooms	28.3 m ²

TOTAL EXTERIOR AREA 88.1 m²

Patio/Fountain	22.7 m ²
Covered terrace	24.6 m ²
Pool Deck	4.8 m ²
Swimming pool	36 m ²

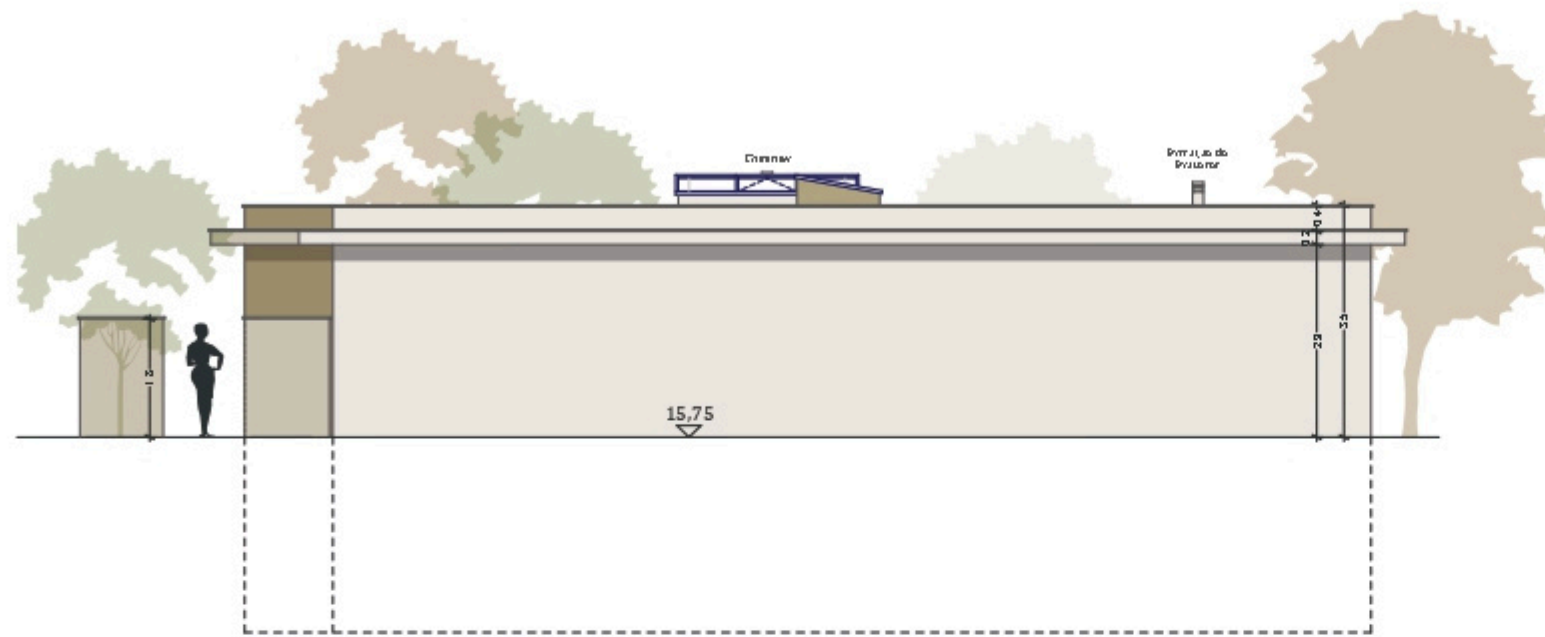
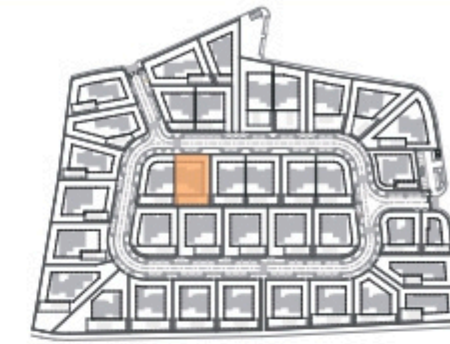
TOTAL AREA 445 m²

Plot of Land	791.3 m ²
Altimetry	15,75

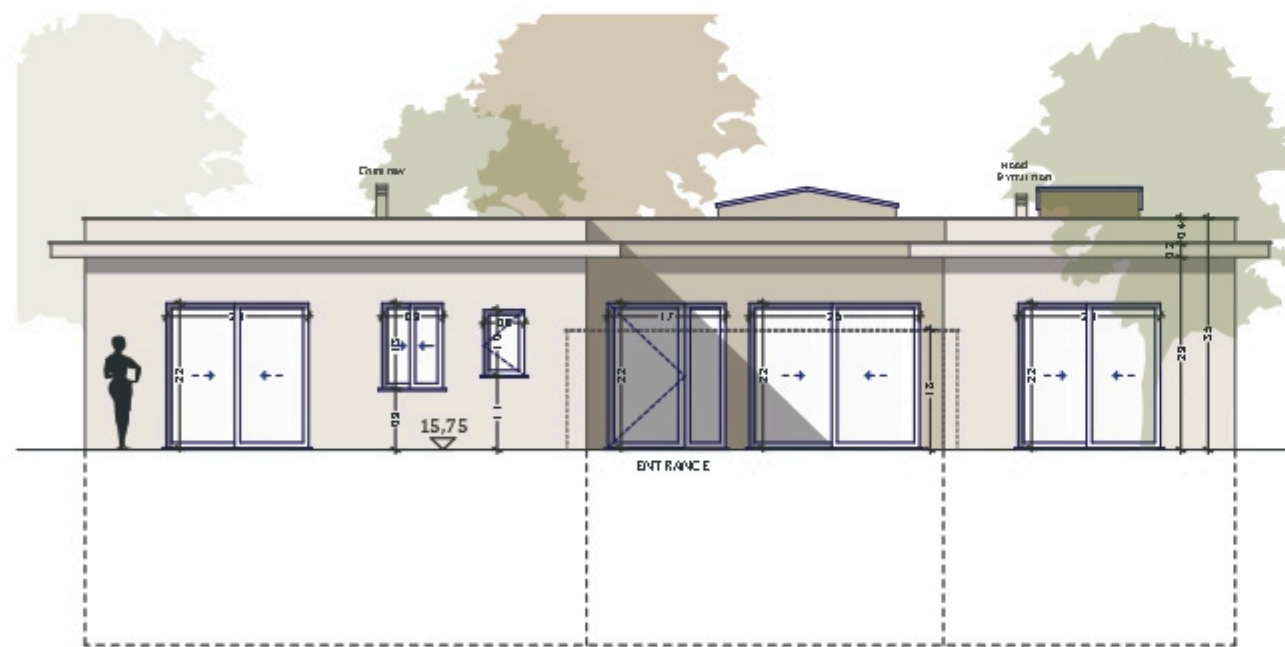
SALES PLAN

VILLA N°29 DOUBLE STOREY

ELEVATION



South elevation



West elevation

Kitchen equipment is not contractual. Their position is indicative. Dimensions and areas are given subject to technical construction and execution requirements. The fallout from false ceilings, soffits and pipes are not systematically shown. The thickness of the insulation will be determined by the technical execution study and therefore the data in this plan are only indicative.

TOTAL INTERIOR LIVING AREA 356.9 m²

GROUND FLOOR 166.4 m²

Living	40.9 m ²
Dining room	17.2 m ²
Kitchen	14.4 m ²
Office	6.2 m ²
Storeroom	5.1 m ²
Ensuite Bedroom 1	20.5 m ²
Ensuite Bedroom 2	26.7 m ²
Dressing Ensuite Bedroom 1	2.8 m ²
Ensuite Bedroom 3	20.8 m ²
Dressing Ensuite Bedroom 3	4.4 m ²
Guest toilet	1.9 m ²
Lobby, Hallway	5.5 m ²

BASEMENT 190.5 m²

Ensuite Bedroom 4	18.3 m ²
Corridor	17.2 m ²
Laundry	6.9 m ²
Gym, Hammam	20.8 m ²
Wine Cellar	10.1 m ²
Garage	88.9 m ²
Technical rooms	28.3 m ²

TOTAL EXTERIOR AREA 88.1 m²

Patio/Fountain	22.7 m ²
Covered terrace	24.6 m ²
Pool Deck	4.8 m ²
Swimming pool	36 m ²

TOTAL AREA 445 m²

Plot of Land	791.3 m ²
Altimetry	15,75