

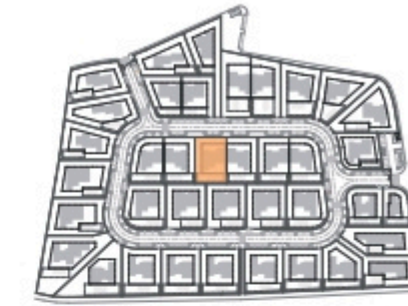
Planta de Arranjos Exteriores

Kitchen equipment is not contractual. Their position is indicative. Dimensions and areas are given subject to technical construction and execution requirements. The fallout from false ceilings, soffits and pipes are not systematically shown. The thickness of the insulation will be determined by the technical execution study and therefore the data in this plan are only indicative.

SALES PLAN

VILLA N°30 DOUBLE STOREY

SITE PLAN



TOTAL INTERIOR LIVING AREA 348.6 m²

GROUND FLOOR 166.4 m²

Living	40.9 m ²
Dining room	17.2 m ²
Kitchen	14.4 m ²
Office	6.2 m ²
Storeroom	5.1 m ²
Ensuite Bedroom 1	20.5 m ²
Bedroom 1 Dressing	2.8 m ²
Ensuite Bedroom 2	26.7 m ²
Bedroom 2 Dressing	4.4 m ²
Ensuite Bedroom 3	20.8 m ²
Guest toilet	1.9 m ²
Lobby Entrance Hall	5.5 m ²

BASEMENT 182.2 m²

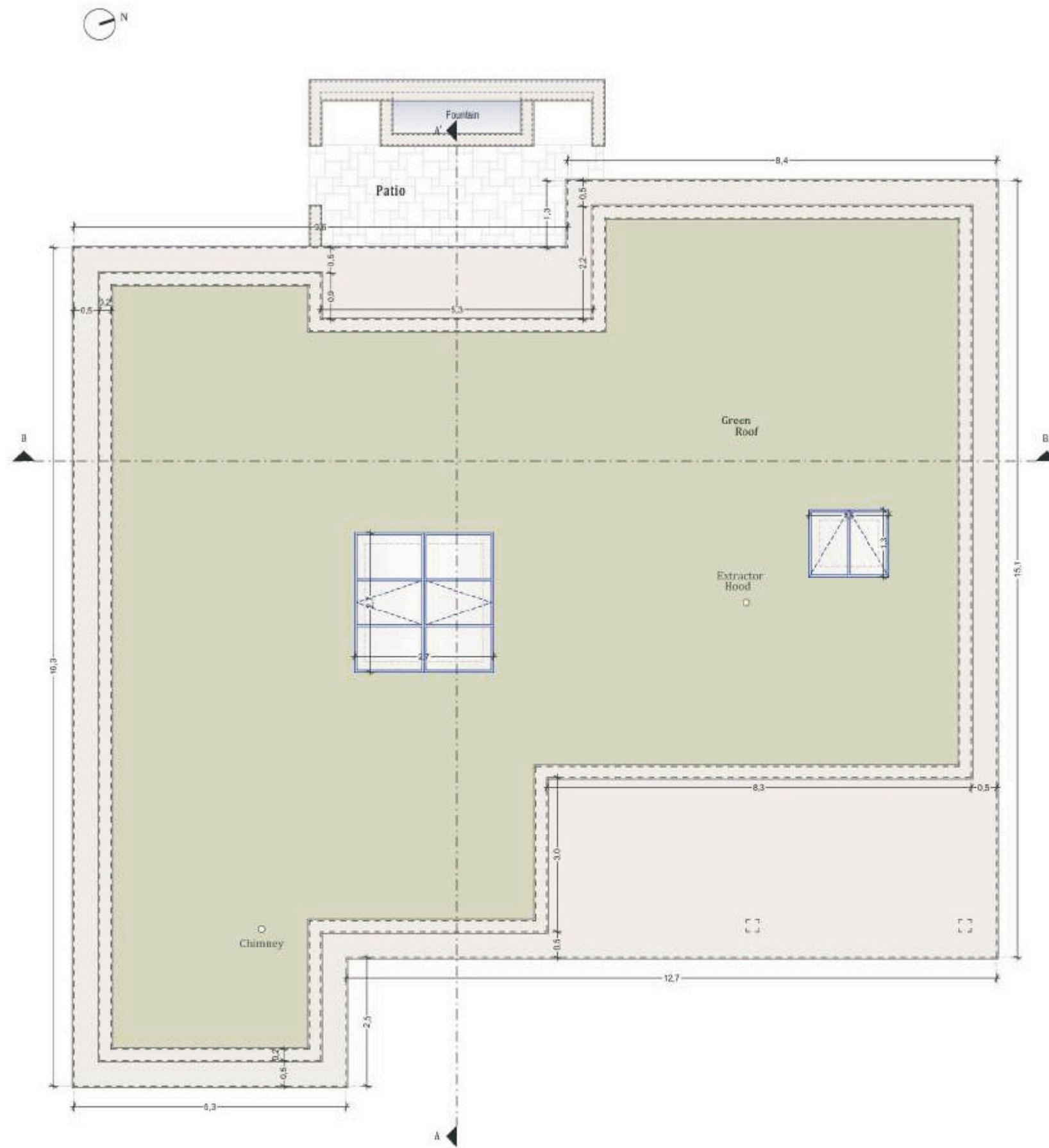
Ensuite Bedroom 4	20.5 m ²
Hallway	17.1 m ²
Laundry	9.5 m ²
Gym	36.9 m ²
Wine Cellar	12.9 m ²
Garage	74.8 m ²
Technical room swim Pool	10.5 m ²

TOTAL EXTERIOR AREA 88.1 m²

Patio/Fountain	22.7 m ²
Covered terrace	24.6 m ²
Pool Deck	4.8 m ²
Swimming pool	36 m ²

TOTAL AREA 436.7 m²

Plot of Land	791.3 m ²
Altimetry	16



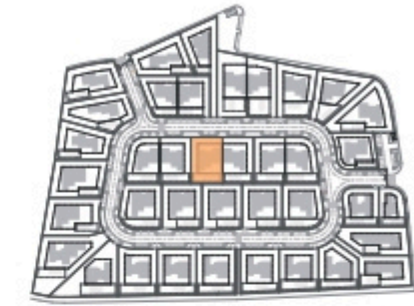
Planta de Cobertura

Kitchen equipment is not contractual. Their position is indicative. Dimensions and areas are given subject to technical construction and execution requirements. The fallout from false ceilings, soffits and pipes are not systematically shown. The thickness of the insulation will be determined by the technical execution study and therefore the data in this plan are only indicative.

SALES PLAN

VILLA N°30 DOUBLE STOREY

FLOOR COVERING PLAN



TOTAL INTERIOR LIVING AREA 348.6 m²

GROUND FLOOR 166.4 m²

Living	40.9 m ²
Dining room	17.2 m ²
Kitchen	14.4 m ²
Office	6.2 m ²
Storeroom	5.1 m ²
Ensuite Bedroom 1	20.5 m ²
Bedroom 1 Dressing	2.8 m ²
Ensuite Bedroom 2	26.7 m ²
Bedroom 2 Dressing	4.4 m ²
Ensuite Bedroom 3	20.8 m ²
Guest toilet	1.9 m ²
Lobby Entrance Hall	5.5 m ²

BASEMENT 182.2 m²

Ensuite Bedroom 4	20.5 m ²
Hallway	17.1 m ²
Laundry	9.5 m ²
Gym	36.9 m ²
Wine Cellar	12.9 m ²
Garage	74.8 m ²
Technical room swim Pool	10.5 m ²

TOTAL EXTERIOR AREA 88.1 m²

Patio/Fountain	22.7 m ²
Covered terrace	24.6 m ²
Pool Deck	4.8 m ²
Swimming pool	36 m ²

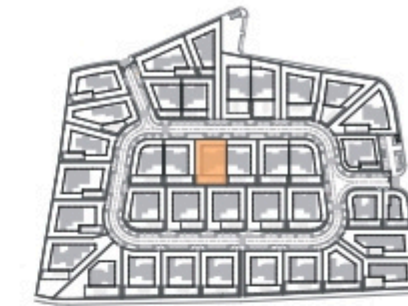
TOTAL AREA 436.7 m²

Plot of Land	791.3 m ²
Altimetry	16

SALES PLAN

VILLA N°30 DOUBLE STOREY

GROUND FLOOR



GROUND FLOOR

Kitchen equipment is not contractual. Their position is indicative. Dimensions and areas are given subject to technical construction and execution requirements. The fallout from false ceilings, soffits and pipes are not systematically shown. The thickness of the insulation will be determined by the technical execution study and therefore the data in this plan are only indicative.

TOTAL INTERIOR LIVING AREA 348.6 m²

GROUND FLOOR 166.4 m²

Living	40.9 m ²
Dining room	17.2 m ²
Kitchen	14.4 m ²
Office	6.2 m ²
Storeroom	5.1 m ²
Ensuite Bedroom 1	20.5 m ²
Bedroom 1 Dressing	2.8 m ²
Ensuite Bedroom 2	26.7 m ²
Bedroom 2 Dressing	4.4 m ²
Ensuite Bedroom 3	20.8 m ²
Guest toilet	1.9 m ²
Lobby Entrance Hall	5.5 m ²

BASEMENT 182.2 m²

Ensuite Bedroom 4	20.5 m ²
Hallway	17.1 m ²
Laundry	9.5 m ²
Gym	36.9 m ²
Wine Cellar	12.9 m ²
Garage	74.8 m ²
Technical room swim Pool	10.5 m ²

TOTAL EXTERIOR AREA 88.1 m²

Patio/Fountain	22.7 m ²
Covered terrace	24.6 m ²
Pool Deck	4.8 m ²
Swimming pool	36 m ²

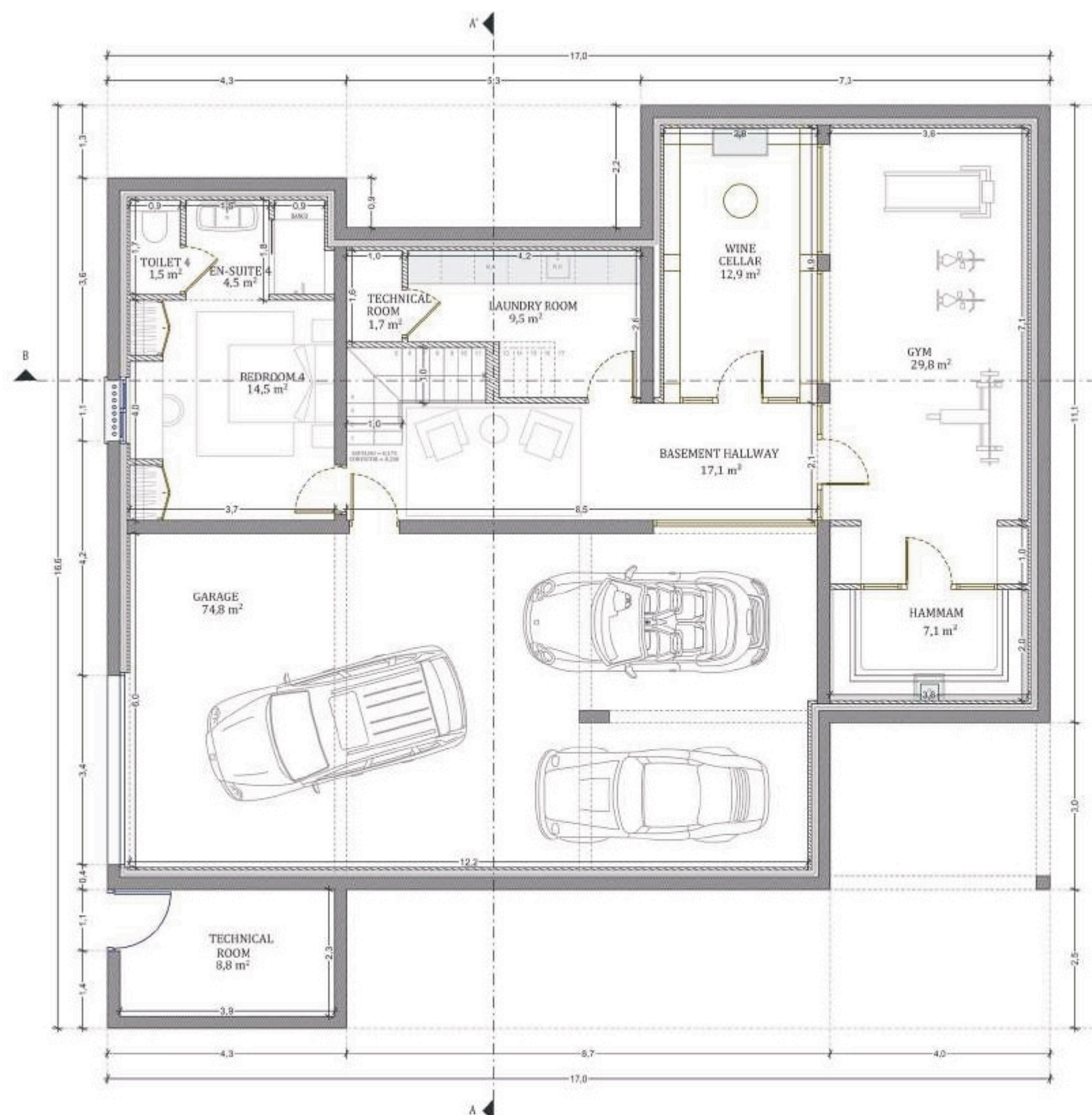
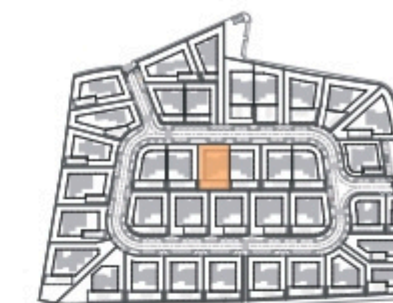
TOTAL AREA 436.7 m²

Plot of Land	791.3 m ²
Altimetry	16

SALES PLAN

VILLA N°30 DOUBLE STOREY

BASEMENT



BASEMENT

Kitchen equipment is not contractual. Their position is indicative. Dimensions and areas are given subject to technical construction and execution requirements. The fallout from false ceilings, soffits and pipes are not systematically shown. The thickness of the insulation will be determined by the technical execution study and therefore the data in this plan are only indicative.

TOTAL INTERIOR LIVING AREA 348.6 m²

GROUND FLOOR 166.4 m²

Living	40.9 m ²
Dining room	17.2 m ²
Kitchen	14.4 m ²
Office	6.2 m ²
Storeroom	5.1 m ²
Ensuite Bedroom 1	20.5 m ²
Bedroom 1 Dressing	2.8 m ²
Ensuite Bedroom 2	26.7 m ²
Bedroom 2 Dressing	4.4 m ²
Ensuite Bedroom 3	20.8 m ²
Guest toilet	1.9 m ²
Lobby Entrance Hall	5.5 m ²

BASEMENT 182.2 m²

Ensuite Bedroom 4	20.5 m ²
Hallway	17.1 m ²
Laundry	9.5 m ²
Gym	36.9 m ²
Wine Cellar	12.9 m ²
Garage	74.8 m ²
Technical room swim Pool	10.5 m ²

TOTAL EXTERIOR AREA 88.1 m²

Patio/Fountain	22.7 m ²
Covered terrace	24.6 m ²
Pool Deck	4.8 m ²
Swimming pool	36 m ²

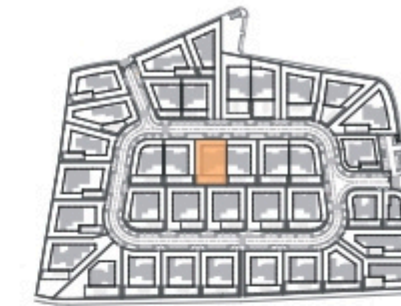
TOTAL AREA 436.7 m²

Plot of Land	791.3 m ²
Altimetry	16

SALES PLAN

VILLA N°30 DOUBLE STOREY

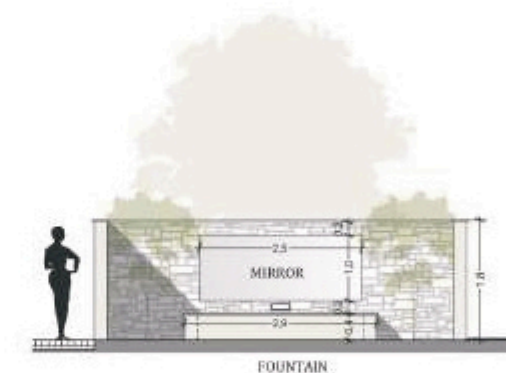
SECTIONAL PLAN



SECTION AA'



SECTION BB'



PATIO

Kitchen equipment is not contractual. Their position is indicative. Dimensions and areas are given subject to technical construction and execution requirements. The fallout from false ceilings, soffits and pipes are not systematically shown. The thickness of the insulation will be determined by the technical execution study and therefore the data in this plan are only indicative.

TOTAL INTERIOR LIVING AREA 348.6 m²

GROUND FLOOR 166.4 m²

Living	40.9 m ²
Dining room	17.2 m ²
Kitchen	14.4 m ²
Office	6.2 m ²
Storeroom	5.1 m ²
Ensuite Bedroom 1	20.5 m ²
Bedroom 1 Dressing	2.8 m ²
Ensuite Bedroom 2	26.7 m ²
Bedroom 2 Dressing	4.4 m ²
Ensuite Bedroom 3	20.8 m ²
Guest toilet	1.9 m ²
Lobby Entrance Hall	5.5 m ²

BASEMENT 182.2 m²

Ensuite Bedroom 4	20.5 m ²
Hallway	17.1 m ²
Laundry	9.5 m ²
Gym	36.9 m ²
Wine Cellar	12.9 m ²
Garage	74.8 m ²
Technical room swim Pool	10.5 m ²

TOTAL EXTERIOR AREA 88.1 m²

Patio/Fountain	22.7 m ²
Covered terrace	24.6 m ²
Pool Deck	4.8 m ²
Swimming pool	36 m ²

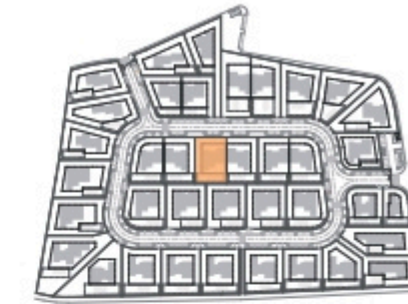
TOTAL AREA 436.7 m²

Plot of Land	791.3 m ²
Altimetry	16

SALES PLAN

VILLA N°30 DOUBLE STOREY

ELEVATIONS



SOUTH



EAST

Kitchen equipment is not contractual. Their position is indicative. Dimensions and areas are given subject to technical construction and execution requirements. The fallout from false ceilings, soffits and pipes are not systematically shown. The thickness of the insulation will be determined by the technical execution study and therefore the data in this plan are only indicative.

TOTAL INTERIOR LIVING AREA 348.6 m²

GROUND FLOOR 166.4 m²

Living	40.9 m ²
Dining room	17.2 m ²
Kitchen	14.4 m ²
Office	6.2 m ²
Storeroom	5.1 m ²
Ensuite Bedroom 1	20.5 m ²
Bedroom 1 Dressing	2.8 m ²
Ensuite Bedroom 2	26.7 m ²
Bedroom 2 Dressing	4.4 m ²
Ensuite Bedroom 3	20.8 m ²
Guest toilet	1.9 m ²
Lobby Entrance Hall	5.5 m ²

BASEMENT 182.2 m²

Ensuite Bedroom 4	20.5 m ²
Hallway	17.1 m ²
Laundry	9.5 m ²
Gym	36.9 m ²
Wine Cellar	12.9 m ²
Garage	74.8 m ²
Technical room swim Pool	10.5 m ²

TOTAL EXTERIOR AREA 88.1 m²

Patio/Fountain	22.7 m ²
Covered terrace	24.6 m ²
Pool Deck	4.8 m ²
Swimming pool	36 m ²

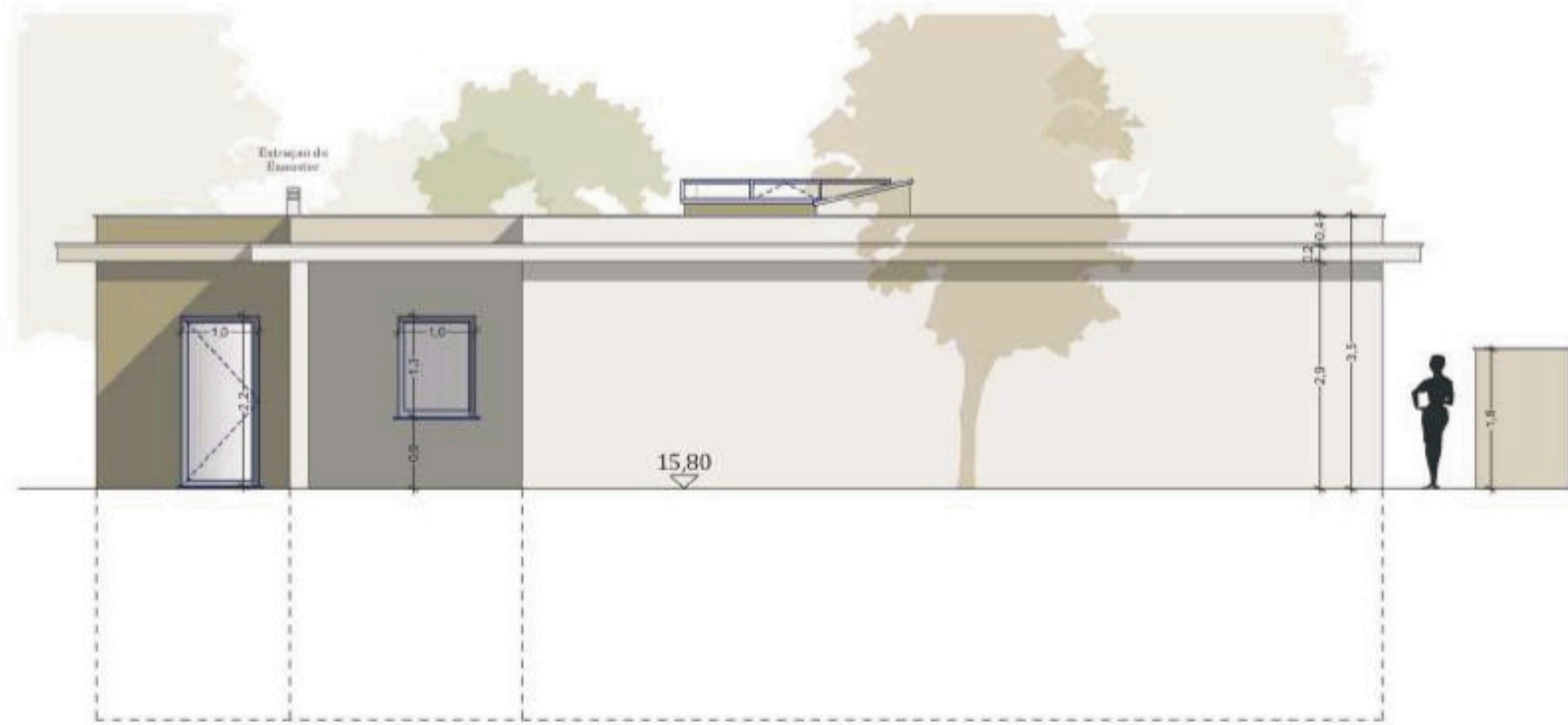
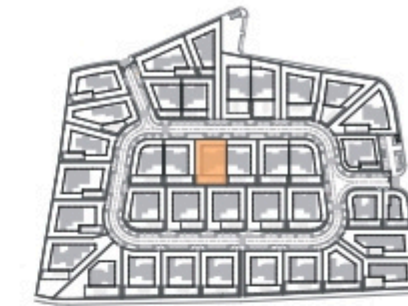
TOTAL AREA 436.7 m²

Plot of Land	791.3 m ²
Altimetry	16

SALES PLAN

VILLA N°30 DOUBLE STOREY

ELEVATIONS



NORTH



WEST

Kitchen equipment is not contractual. Their position is indicative. Dimensions and areas are given subject to technical construction and execution requirements. The fallout from false ceilings, soffits and pipes are not systematically shown. The thickness of the insulation will be determined by the technical execution study and therefore the data in this plan are only indicative.

TOTAL INTERIOR LIVING AREA 348.6 m²

GROUND FLOOR 166.4 m²

Living	40.9 m ²
Dining room	17.2 m ²
Kitchen	14.4 m ²
Office	6.2 m ²
Storeroom	5.1 m ²
Ensuite Bedroom 1	20.5 m ²
Bedroom 1 Dressing	2.8 m ²
Ensuite Bedroom 2	26.7 m ²
Bedroom 2 Dressing	4.4 m ²
Ensuite Bedroom 3	20.8 m ²
Guest toilet	1.9 m ²
Lobby Entrance Hall	5.5 m ²

BASEMENT 182.2 m²

Ensuite Bedroom 4	20.5 m ²
Hallway	17.1 m ²
Laundry	9.5 m ²
Gym	36.9 m ²
Wine Cellar	12.9 m ²
Garage	74.8 m ²
Technical room swim Pool	10.5 m ²

TOTAL EXTERIOR AREA 88.1 m²

Patio/Fountain	22.7 m ²
Covered terrace	24.6 m ²
Pool Deck	4.8 m ²
Swimming pool	36 m ²

TOTAL AREA 436.7 m²

Plot of Land	791.3 m ²
Altimetry	16