

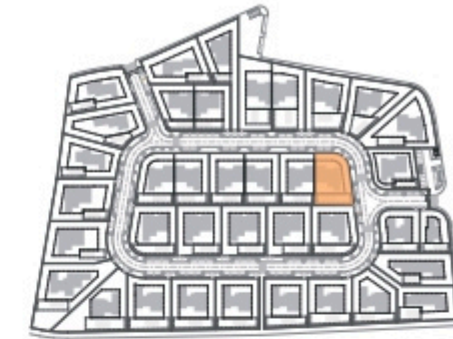
Planta de Arranjos Exteriores

Kitchen equipment is not contractual. Their position is indicative. Dimensions and areas are given subject to technical construction and execution requirements. The fallout from false ceilings, soffits and pipes are not systematically shown. The thickness of the insulation will be determined by the technical execution study and therefore the data in this plan are only indicative.

## SALES PLAN

VILLA N°33 DOUBLE STOREY

SITE PLAN



**TOTAL INTERIOR LIVING AREA 347.5 m<sup>2</sup>**

**GROUND FLOOR 165.3 m<sup>2</sup>**

Living	40.9 m <sup>2</sup>
Dining room	17.2 m <sup>2</sup>
Kitchen	14.4 m <sup>2</sup>
Office	6.2 m <sup>2</sup>
Storeroom Pantry	5.1 m <sup>2</sup>
Ensuite Bedroom 1	20.5 m <sup>2</sup>
Bedroom 1 Dressing	2.8 m <sup>2</sup>
Ensuite Bedroom 2	26.7 m <sup>2</sup>
Bedroom 2 Dressing	4.4 m <sup>2</sup>
Ensuite Bedroom 3	19.7 m <sup>2</sup>
Guest toilet	1.9 m <sup>2</sup>
Hallway	5.5 m <sup>2</sup>

**BASEMENT 182.2 m<sup>2</sup>**

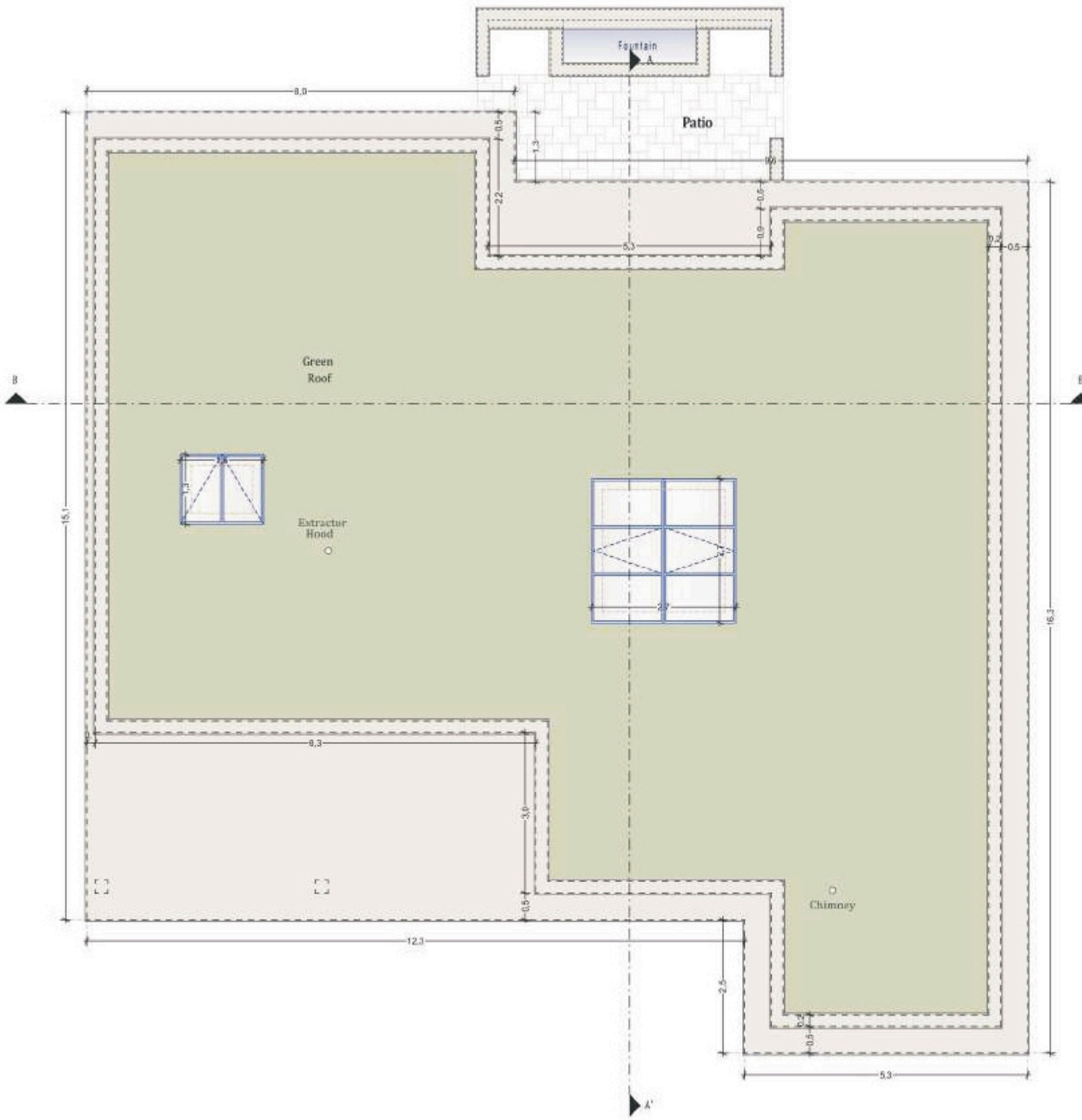
Ensuite Bedroom 4	20.5 m <sup>2</sup>
Hallway	17.1 m <sup>2</sup>
Laundry	9.5 m <sup>2</sup>
Gym, Hammam	36.9 m <sup>2</sup>
Wine Cellar	12.9 m <sup>2</sup>
Garage	74.8 m <sup>2</sup>
Technical room swim Pool	10.5 m <sup>2</sup>

**TOTAL EXTERIOR AREA 88.1 m<sup>2</sup>**

Patio/Fountain	22.7 m <sup>2</sup>
Covered terrace	24.6 m <sup>2</sup>
Pool Deck	4.8 m <sup>2</sup>
Swimming pool	36 m <sup>2</sup>

**TOTAL AREA 435.6 m<sup>2</sup>**

Plot of Land	795.5 m <sup>2</sup>
Altimetry	15



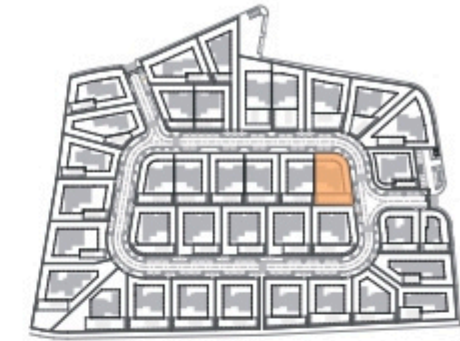
Planta de Cobertura

Kitchen equipment is not contractual. Their position is indicative. Dimensions and areas are given subject to technical construction and execution requirements. The fallout from false ceilings, soffits and pipes are not systematically shown. The thickness of the insulation will be determined by the technical execution study and therefore the data in this plan are only indicative.

## SALES PLAN

VILLA N°33 DOUBLE STOREY

FLOOR COVERING PLAN



**TOTAL INTERIOR LIVING AREA 347.5 m<sup>2</sup>**

**GROUND FLOOR 165.3 m<sup>2</sup>**

Living	40.9 m <sup>2</sup>
Dining room	17.2 m <sup>2</sup>
Kitchen	14.4 m <sup>2</sup>
Office	6.2 m <sup>2</sup>
Storeroom Pantry	5.1 m <sup>2</sup>
Ensuite Bedroom 1	20.5 m <sup>2</sup>
Bedroom 1 Dressing	2.8 m <sup>2</sup>
Ensuite Bedroom 2	26.7 m <sup>2</sup>
Bedroom 2 Dressing	4.4 m <sup>2</sup>
Ensuite Bedroom 3	19.7 m <sup>2</sup>
Guest toilet	1.9 m <sup>2</sup>
Hallway	5.5 m <sup>2</sup>

**BASEMENT 182.2 m<sup>2</sup>**

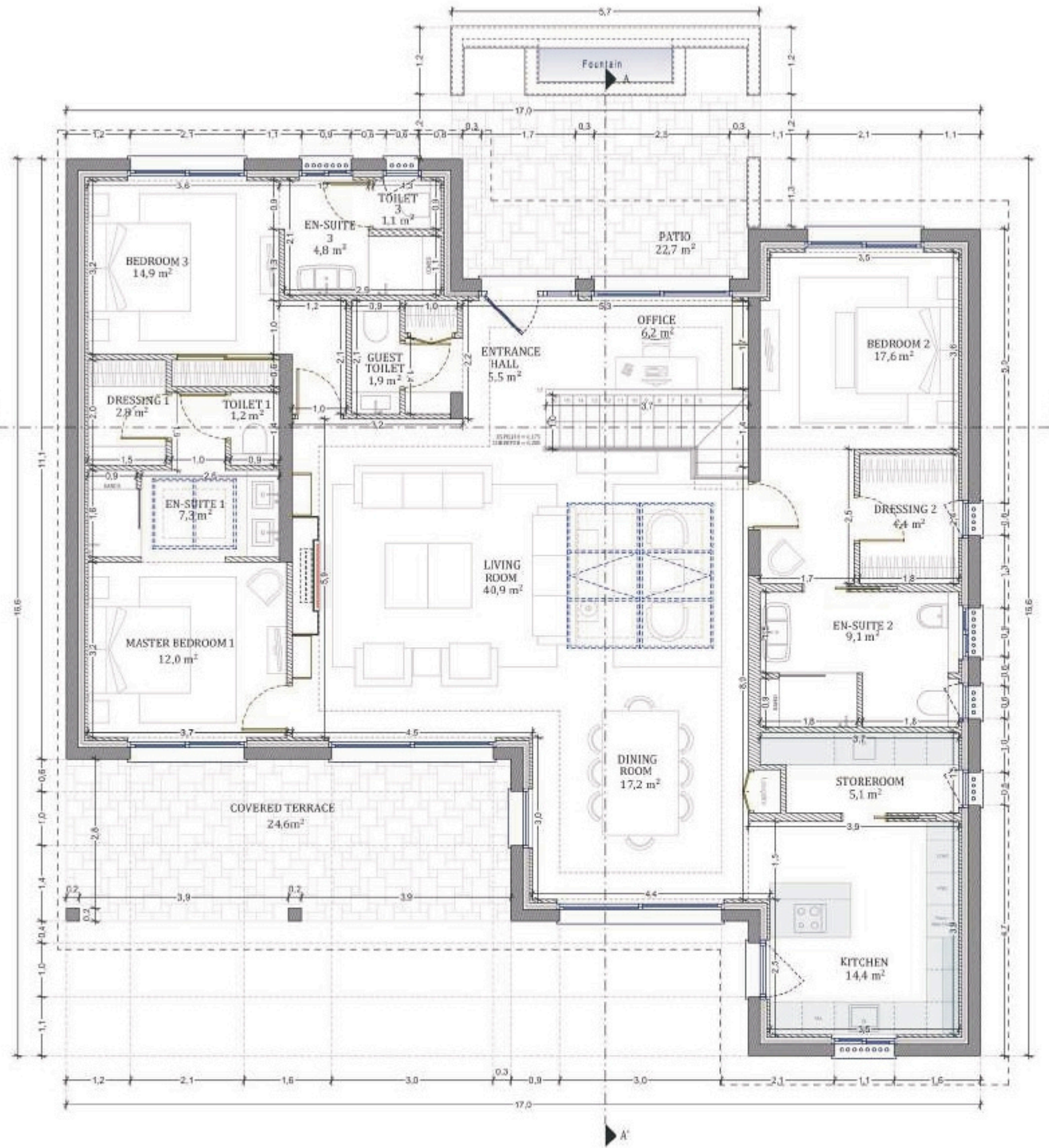
Ensuite Bedroom 4	20.5 m <sup>2</sup>
Hallway	17.1 m <sup>2</sup>
Laundry	9.5 m <sup>2</sup>
Gym, Hammam	36.9 m <sup>2</sup>
Wine Cellar	12.9 m <sup>2</sup>
Garage	74.8 m <sup>2</sup>
Technical room swim Pool	10.5 m <sup>2</sup>

**TOTAL EXTERIOR AREA 88.1 m<sup>2</sup>**

Patio/Fountain	22.7 m <sup>2</sup>
Covered terrace	24.6 m <sup>2</sup>
Pool Deck	4.8 m <sup>2</sup>
Swimming pool	36 m <sup>2</sup>

**TOTAL AREA 435.6 m<sup>2</sup>**

Plot of Land	795.5 m <sup>2</sup>
Altimetry	15



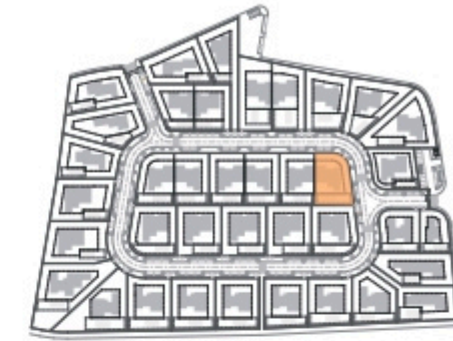
GROUND FLOOR

Kitchen equipment is not contractual. Their position is indicative. Dimensions and areas are given subject to technical construction and execution requirements. The fallout from false ceilings, soffits and pipes are not systematically shown. The thickness of the insulation will be determined by the technical execution study and therefore the data in this plan are only indicative.

## SALES PLAN

VILLA N°33 DOUBLE STOREY

GROUND FLOOR



**TOTAL INTERIOR LIVING AREA 347.5 m<sup>2</sup>**

**GROUND FLOOR 165.3 m<sup>2</sup>**

Living	40.9 m <sup>2</sup>
Dining room	17.2 m <sup>2</sup>
Kitchen	14.4 m <sup>2</sup>
Office	6.2 m <sup>2</sup>
Storeroom Pantry	5.1 m <sup>2</sup>
Ensuite Bedroom 1	20.5 m <sup>2</sup>
Bedroom 1 Dressing	2.8 m <sup>2</sup>
Ensuite Bedroom 2	26.7 m <sup>2</sup>
Bedroom 2 Dressing	4.4 m <sup>2</sup>
Ensuite Bedroom 3	19.7 m <sup>2</sup>
Guest toilet	1.9 m <sup>2</sup>
Hallway	5.5 m <sup>2</sup>

**BASEMENT 182.2 m<sup>2</sup>**

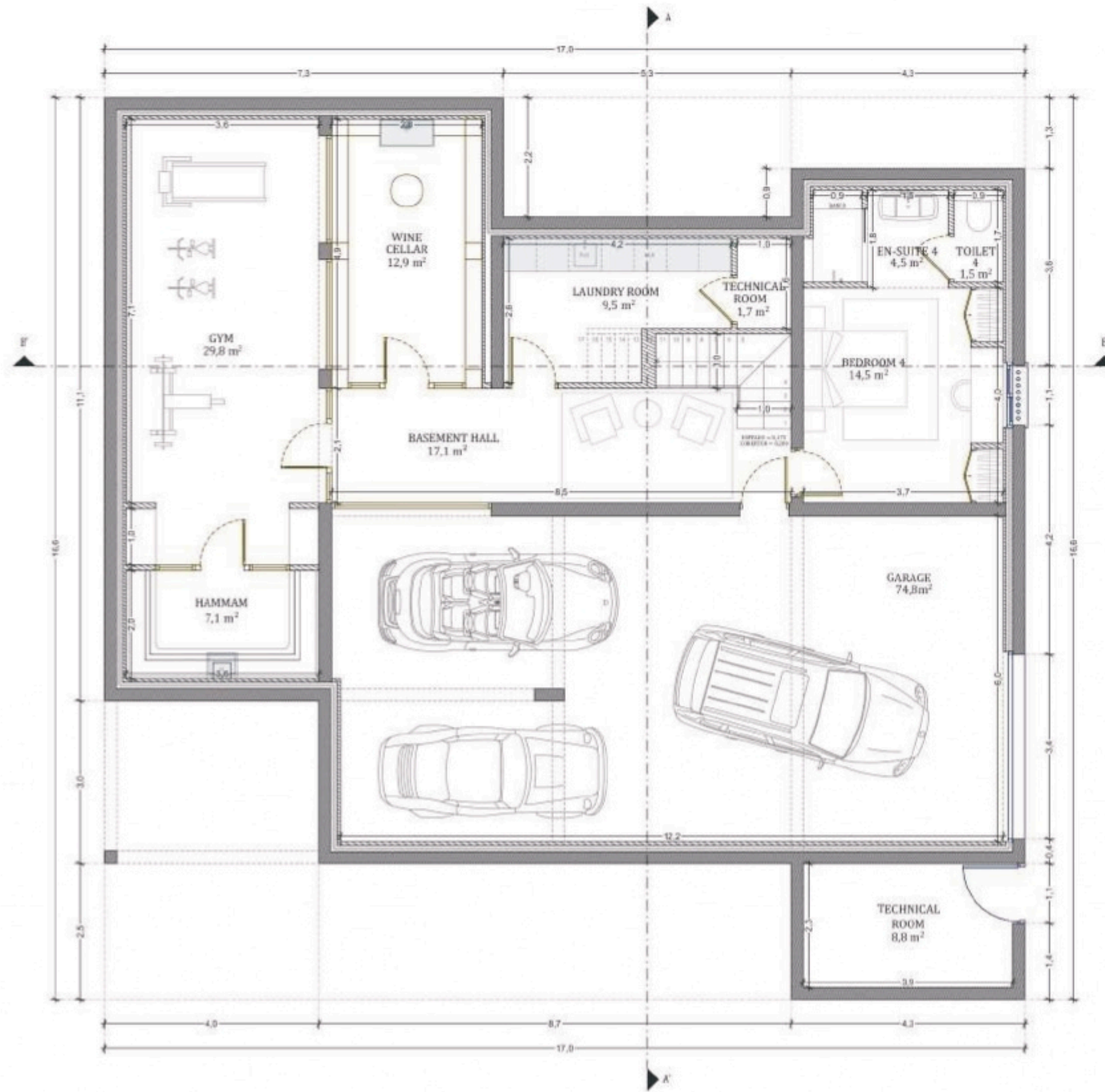
Ensuite Bedroom 4	20.5 m <sup>2</sup>
Hallway	17.1 m <sup>2</sup>
Laundry	9.5 m <sup>2</sup>
Gym, Hammam	36.9 m <sup>2</sup>
Wine Cellar	12.9 m <sup>2</sup>
Garage	74.8 m <sup>2</sup>
Technical room swim Pool	10.5 m <sup>2</sup>

**TOTAL EXTERIOR AREA 88.1 m<sup>2</sup>**

Patio/Fountain	22.7 m <sup>2</sup>
Covered terrace	24.6 m <sup>2</sup>
Pool Deck	4.8 m <sup>2</sup>
Swimming pool	36 m <sup>2</sup>

**TOTAL AREA 435.6 m<sup>2</sup>**

Plot of Land	795.5 m <sup>2</sup>
Altimetry	15



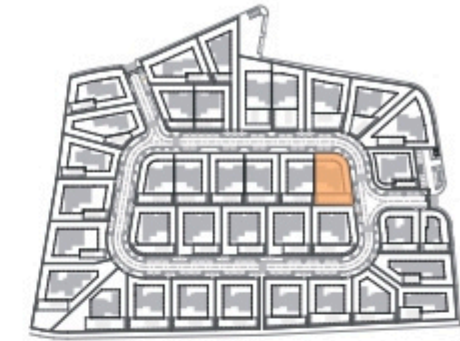
BASEMENT

Kitchen equipment is not contractual. Their position is indicative. Dimensions and areas are given subject to technical construction and execution requirements. The fallout from false ceilings, soffits and pipes are not systematically shown. The thickness of the insulation will be determined by the technical execution study and therefore the data in this plan are only indicative.

## SALES PLAN

VILLA N°33 DOUBLE STOREY

BASEMENT



**TOTAL INTERIOR LIVING AREA 347.5 m<sup>2</sup>**

**GROUND FLOOR 165.3 m<sup>2</sup>**

Living	40.9 m <sup>2</sup>
Dining room	17.2 m <sup>2</sup>
Kitchen	14.4 m <sup>2</sup>
Office	6.2 m <sup>2</sup>
Storeroom Pantry	5.1 m <sup>2</sup>
Ensuite Bedroom 1	20.5 m <sup>2</sup>
Bedroom 1 Dressing	2.8 m <sup>2</sup>
Ensuite Bedroom 2	26.7 m <sup>2</sup>
Bedroom 2 Dressing	4.4 m <sup>2</sup>
Ensuite Bedroom 3	19.7 m <sup>2</sup>
Guest toilet	1.9 m <sup>2</sup>
Hallway	5.5 m <sup>2</sup>

**BASEMENT 182.2 m<sup>2</sup>**

Ensuite Bedroom 4	20.5 m <sup>2</sup>
Hallway	17.1 m <sup>2</sup>
Laundry	9.5 m <sup>2</sup>
Gym, Hammam	36.9 m <sup>2</sup>
Wine Cellar	12.9 m <sup>2</sup>
Garage	74.8 m <sup>2</sup>
Technical room swim Pool	10.5 m <sup>2</sup>

**TOTAL EXTERIOR AREA 88.1 m<sup>2</sup>**

Patio/Fountain	22.7 m <sup>2</sup>
Covered terrace	24.6 m <sup>2</sup>
Pool Deck	4.8 m <sup>2</sup>
Swimming pool	36 m <sup>2</sup>

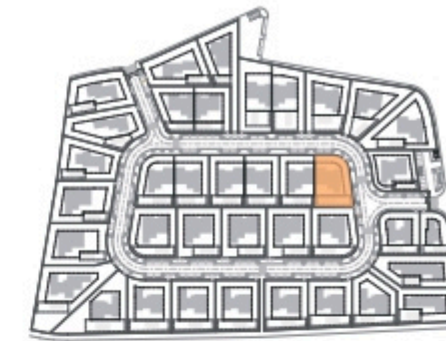
**TOTAL AREA 435.6 m<sup>2</sup>**

Plot of Land	795.5 m <sup>2</sup>
Altimetry	15

# SALES PLAN

VILLA N°33 DOUBLE STOREY

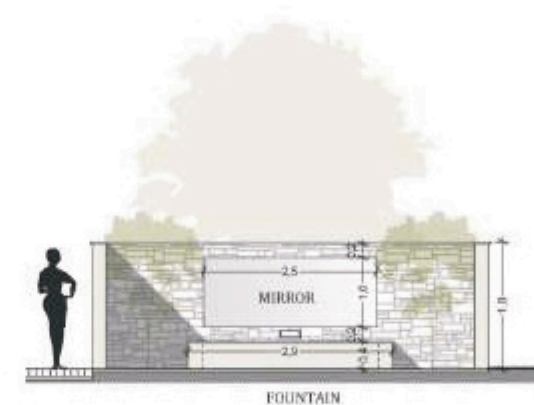
SECTIONAL PLAN



SECTION AA'



SECTION BB'



PATIO

REQUERENTE	Paraisos Heroicos, Lda.	
LOCALIZAÇÃO	Lugar	Fre
	Marchil - Montenegro	Mo
DESIGNAÇÃO	Cortes	
	Coordenador	Autor

Kitchen equipment is not contractual. Their position is indicative. Dimensions and areas are given subject to technical construction and execution requirements. The fallout from false ceilings, soffits and pipes are not systematically shown. The thickness of the insulation will be determined by the technical execution study and therefore the data in this plan are only indicative.

**TOTAL INTERIOR LIVING AREA 347.5 m<sup>2</sup>**

**GROUND FLOOR 165.3 m<sup>2</sup>**

Living	40.9 m <sup>2</sup>
Dining room	17.2 m <sup>2</sup>
Kitchen	14.4 m <sup>2</sup>
Office	6.2 m <sup>2</sup>
Storeroom Pantry	5.1 m <sup>2</sup>
Ensuite Bedroom 1	20.5 m <sup>2</sup>
Bedroom 1 Dressing	2.8 m <sup>2</sup>
Ensuite Bedroom 2	26.7 m <sup>2</sup>
Bedroom 2 Dressing	4.4 m <sup>2</sup>
Ensuite Bedroom 3	19.7 m <sup>2</sup>
Guest toilet	1.9 m <sup>2</sup>
Hallway	5.5 m <sup>2</sup>

**BASEMENT 182.2 m<sup>2</sup>**

Ensuite Bedroom 4	20.5 m <sup>2</sup>
Hallway	17.1 m <sup>2</sup>
Laundry	9.5 m <sup>2</sup>
Gym, Hammam	36.9 m <sup>2</sup>
Wine Cellar	12.9 m <sup>2</sup>
Garage	74.8 m <sup>2</sup>
Technical room swim Pool	10.5 m <sup>2</sup>

**TOTAL EXTERIOR AREA 88.1 m<sup>2</sup>**

Patio/Fountain	22.7 m <sup>2</sup>
Covered terrace	24.6 m <sup>2</sup>
Pool Deck	4.8 m <sup>2</sup>
Swimming pool	36 m <sup>2</sup>

**TOTAL AREA 435.6 m<sup>2</sup>**

Plot of Land	795.5 m <sup>2</sup>
Altimetry	15



NORTH



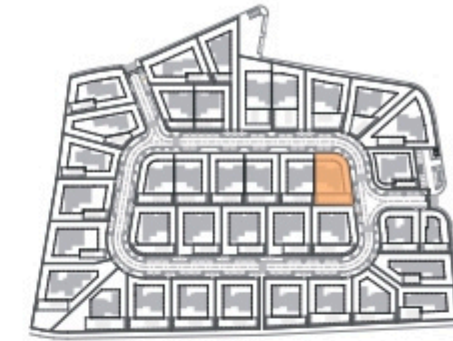
EAST

Kitchen equipment is not contractual. Their position is indicative. Dimensions and areas are given subject to technical construction and execution requirements. The fallout from false ceilings, soffits and pipes are not systematically shown. The thickness of the insulation will be determined by the technical execution study and therefore the data in this plan are only indicative.

## SALES PLAN

VILLA N°33 DOUBLE STOREY

ELEVATIONS



**TOTAL INTERIOR LIVING AREA 347.5 m<sup>2</sup>**

**GROUND FLOOR 165.3 m<sup>2</sup>**

Living	40.9 m <sup>2</sup>
Dining room	17.2 m <sup>2</sup>
Kitchen	14.4 m <sup>2</sup>
Office	6.2 m <sup>2</sup>
Storeroom Pantry	5.1 m <sup>2</sup>
Ensuite Bedroom 1	20.5 m <sup>2</sup>
Bedroom 1 Dressing	2.8 m <sup>2</sup>
Ensuite Bedroom 2	26.7 m <sup>2</sup>
Bedroom 2 Dressing	4.4 m <sup>2</sup>
Ensuite Bedroom 3	19.7 m <sup>2</sup>
Guest toilet	1.9 m <sup>2</sup>
Hallway	5.5 m <sup>2</sup>

**BASEMENT 182.2 m<sup>2</sup>**

Ensuite Bedroom 4	20.5 m <sup>2</sup>
Hallway	17.1 m <sup>2</sup>
Laundry	9.5 m <sup>2</sup>
Gym, Hammam	36.9 m <sup>2</sup>
Wine Cellar	12.9 m <sup>2</sup>
Garage	74.8 m <sup>2</sup>
Technical room swim Pool	10.5 m <sup>2</sup>

**TOTAL EXTERIOR AREA 88.1 m<sup>2</sup>**

Patio/Fountain	22.7 m <sup>2</sup>
Covered terrace	24.6 m <sup>2</sup>
Pool Deck	4.8 m <sup>2</sup>
Swimming pool	36 m <sup>2</sup>

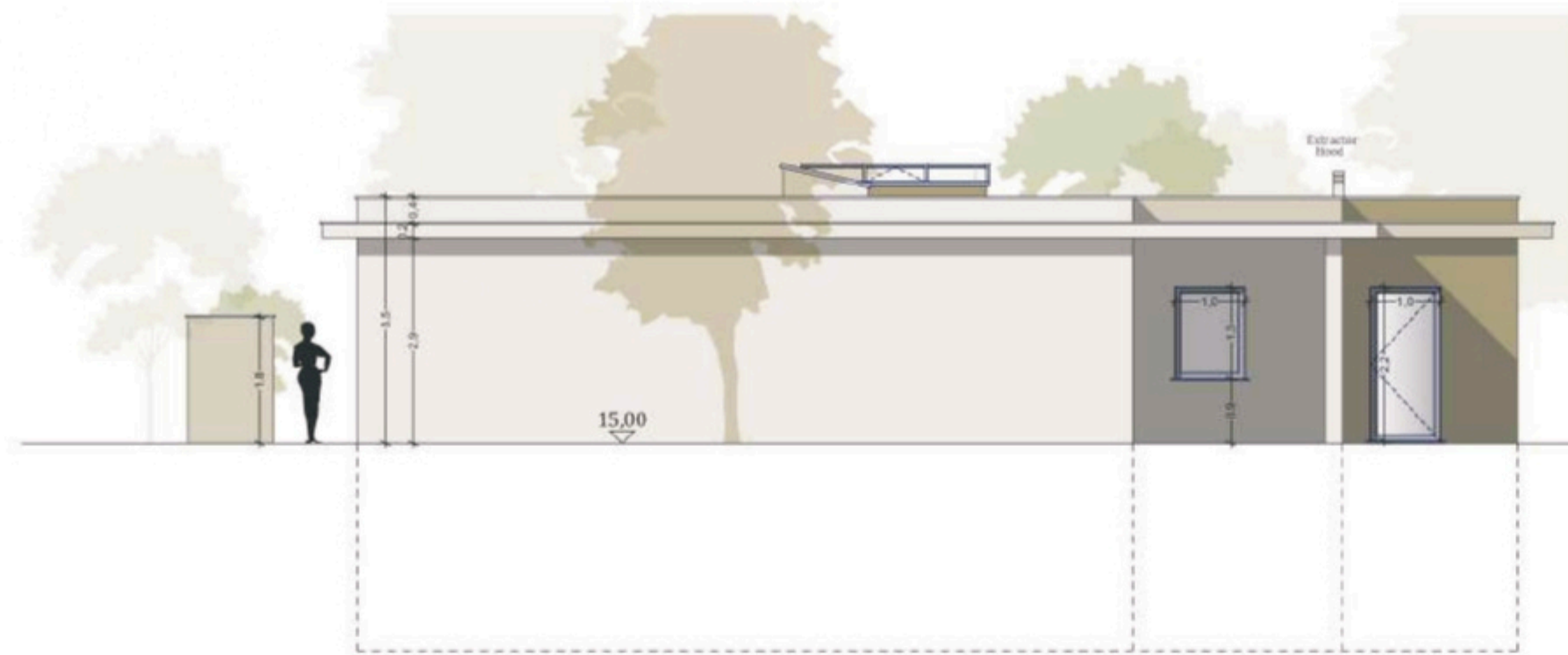
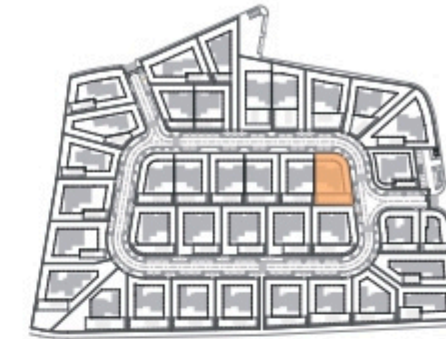
**TOTAL AREA 435.6 m<sup>2</sup>**

Plot of Land	795.5 m <sup>2</sup>
Altimetry	15

# SALES PLAN

VILLA N°33 DOUBLE STOREY

ELEVATIONS



SOUTH



WEST

Kitchen equipment is not contractual. Their position is indicative. Dimensions and areas are given subject to technical construction and execution requirements. The fallout from false ceilings, soffits and pipes are not systematically shown. The thickness of the insulation will be determined by the technical execution study and therefore the data in this plan are only indicative.

**TOTAL INTERIOR LIVING AREA 347.5 m<sup>2</sup>**

**GROUND FLOOR 165.3 m<sup>2</sup>**

Living	40.9 m <sup>2</sup>
Dining room	17.2 m <sup>2</sup>
Kitchen	14.4 m <sup>2</sup>
Office	6.2 m <sup>2</sup>
Storeroom Pantry	5.1 m <sup>2</sup>
Ensuite Bedroom 1	20.5 m <sup>2</sup>
Bedroom 1 Dressing	2.8 m <sup>2</sup>
Ensuite Bedroom 2	26.7 m <sup>2</sup>
Bedroom 2 Dressing	4.4 m <sup>2</sup>
Ensuite Bedroom 3	19.7 m <sup>2</sup>
Guest toilet	1.9 m <sup>2</sup>
Hallway	5.5 m <sup>2</sup>

**BASEMENT 182.2 m<sup>2</sup>**

Ensuite Bedroom 4	20.5 m <sup>2</sup>
Hallway	17.1 m <sup>2</sup>
Laundry	9.5 m <sup>2</sup>
Gym, Hammam	36.9 m <sup>2</sup>
Wine Cellar	12.9 m <sup>2</sup>
Garage	74.8 m <sup>2</sup>
Technical room swim Pool	10.5 m <sup>2</sup>

**TOTAL EXTERIOR AREA 88.1 m<sup>2</sup>**

Patio/Fountain	22.7 m <sup>2</sup>
Covered terrace	24.6 m <sup>2</sup>
Pool Deck	4.8 m <sup>2</sup>
Swimming pool	36 m <sup>2</sup>

**TOTAL AREA 435.6 m<sup>2</sup>**

Plot of Land	795.5 m <sup>2</sup>
Altimetry	15