

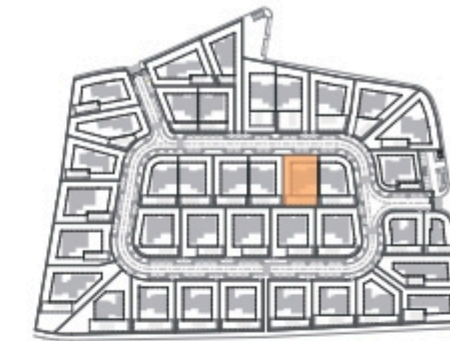
Planta de Arranjos Exteriores

Kitchen equipment is not contractual. Their position is indicative. Dimensions and areas are given subject to technical construction and execution requirements. The fallout from false ceilings, soffits and pipes are not systematically shown. The thickness of the insulation will be determined by the technical execution study and therefore the data in this plan are only indicative.

## SALES PLAN

VILLA N°31 DOUBLE STOREY

SITE PLAN



**TOTAL INTERIOR LIVING AREA 348.6 m<sup>2</sup>**

**GROUND FLOOR 166.4 m<sup>2</sup>**

Living	40.9 m <sup>2</sup>
Dining room	17.2 m <sup>2</sup>
Kitchen	14.4 m <sup>2</sup>
Office	6.2 m <sup>2</sup>
Storeroom Pantry	5.1 m <sup>2</sup>
Ensuite Bedroom 1	20.5 m <sup>2</sup>
Bedroom 1 Dressing	2.8 m <sup>2</sup>
Ensuite Bedroom 2	26.7 m <sup>2</sup>
Bedroom 2 Dressing	4.4 m <sup>2</sup>
Ensuite Bedroom 3	20.8 m <sup>2</sup>
Guest toilet	1.9 m <sup>2</sup>
Lobby	5.5 m <sup>2</sup>

**BASEMENT 182.2 m<sup>2</sup>**

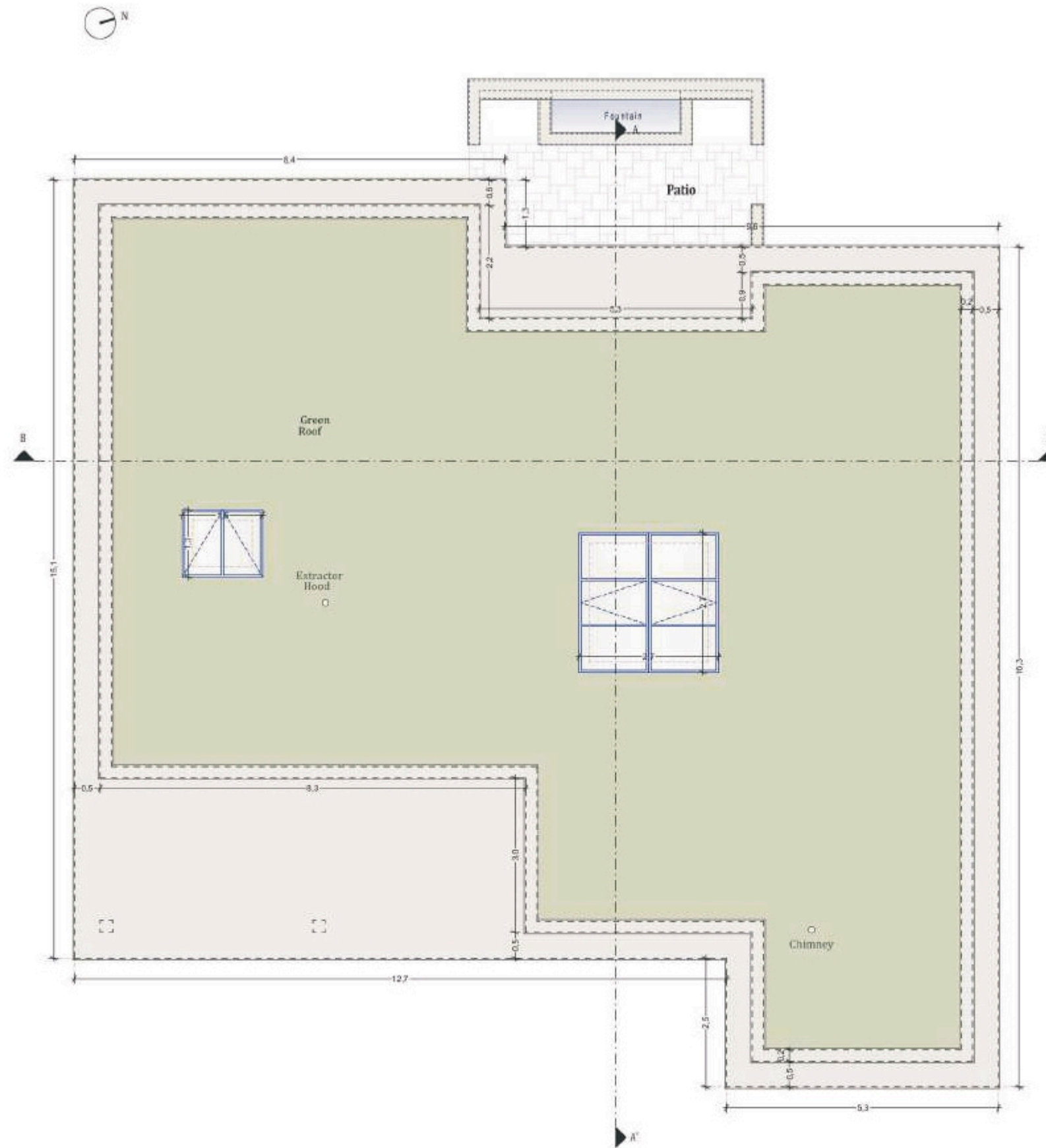
Ensuite Bedroom 4	20.5 m <sup>2</sup>
Corridor	17.1 m <sup>2</sup>
Laundry	9.5 m <sup>2</sup>
Gym, Hammam	36.9 m <sup>2</sup>
Wine Cellar	12.9 m <sup>2</sup>
Garage	74.8 m <sup>2</sup>
Technical room swim Pool	10.5 m <sup>2</sup>

**TOTAL EXTERIOR AREA 88.1 m<sup>2</sup>**

Patio/Fountain	22.7 m <sup>2</sup>
Covered terrace	24.6 m <sup>2</sup>
Pool Deck	4.8 m <sup>2</sup>
Swimming pool	36 m <sup>2</sup>

**TOTAL AREA 436.7 m<sup>2</sup>**

Plot of Land	790.5 m <sup>2</sup>
Altimetry	16,8



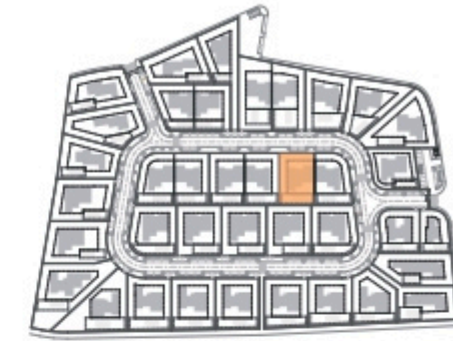
Planta de Cobertura

Kitchen equipment is not contractual. Their position is indicative. Dimensions and areas are given subject to technical construction and execution requirements.  
The fallout from false ceilings, soffits and pipes are not systematically shown.  
The thickness of the insulation will be determined by the technical execution study and therefore the data in this plan are only indicative.

## SALES PLAN

VILLA N°31 DOUBLE STOREY

FLOOR COVERING FLOOR



**TOTAL INTERIOR LIVING AREA 348.6 m<sup>2</sup>**

**GROUND FLOOR 166.4 m<sup>2</sup>**

Living	40.9 m <sup>2</sup>
Dining room	17.2 m <sup>2</sup>
Kitchen	14.4 m <sup>2</sup>
Office	6.2 m <sup>2</sup>
Storeroom Pantry	5.1 m <sup>2</sup>
Ensuite Bedroom 1	20.5 m <sup>2</sup>
Bedroom 1 Dressing	2.8 m <sup>2</sup>
Ensuite Bedroom 2	26.7 m <sup>2</sup>
Bedroom 2 Dressing	4.4 m <sup>2</sup>
Ensuite Bedroom 3	20.8 m <sup>2</sup>
Guest toilet	1.9 m <sup>2</sup>
Lobby	5.5 m <sup>2</sup>

**BASEMENT 182.2 m<sup>2</sup>**

Ensuite Bedroom 4	20.5 m <sup>2</sup>
Corridor	17.1 m <sup>2</sup>
Laundry	9.5 m <sup>2</sup>
Gym, Hammam	36.9 m <sup>2</sup>
Wine Cellar	12.9 m <sup>2</sup>
Garage	74.8 m <sup>2</sup>
Technical room swim Pool	10.5 m <sup>2</sup>

**TOTAL EXTERIOR AREA 88.1 m<sup>2</sup>**

Patio/Fountain	22.7 m <sup>2</sup>
Covered terrace	24.6 m <sup>2</sup>
Pool Deck	4.8 m <sup>2</sup>
Swimming pool	36 m <sup>2</sup>

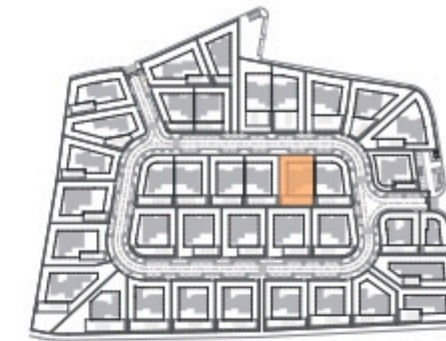
**TOTAL AREA 436.7 m<sup>2</sup>**

Plot of Land	790.5 m <sup>2</sup>
Altimetry	16,8

# SALES PLAN

VILLA N°31 DOUBLE STOREY

GROUND FLOOR



GROUND FLOOR

Kitchen equipment is not contractual. Their position is indicative. Dimensions and areas are given subject to technical construction and execution requirements. The fallout from false ceilings, soffits and pipes are not systematically shown. The thickness of the insulation will be determined by the technical execution study and therefore the data in this plan are only indicative.

**TOTAL INTERIOR LIVING AREA 348.6 m<sup>2</sup>**

**GROUND FLOOR 166.4 m<sup>2</sup>**

Living	40.9 m <sup>2</sup>
Dining room	17.2 m <sup>2</sup>
Kitchen	14.4 m <sup>2</sup>
Office	6.2 m <sup>2</sup>
Storeroom Pantry	5.1 m <sup>2</sup>
Ensuite Bedroom 1	20.5 m <sup>2</sup>
Bedroom 1 Dressing	2.8 m <sup>2</sup>
Ensuite Bedroom 2	26.7 m <sup>2</sup>
Bedroom 2 Dressing	4.4 m <sup>2</sup>
Ensuite Bedroom 3	20.8 m <sup>2</sup>
Guest toilet	1.9 m <sup>2</sup>
Lobby	5.5 m <sup>2</sup>

**BASEMENT 182.2 m<sup>2</sup>**

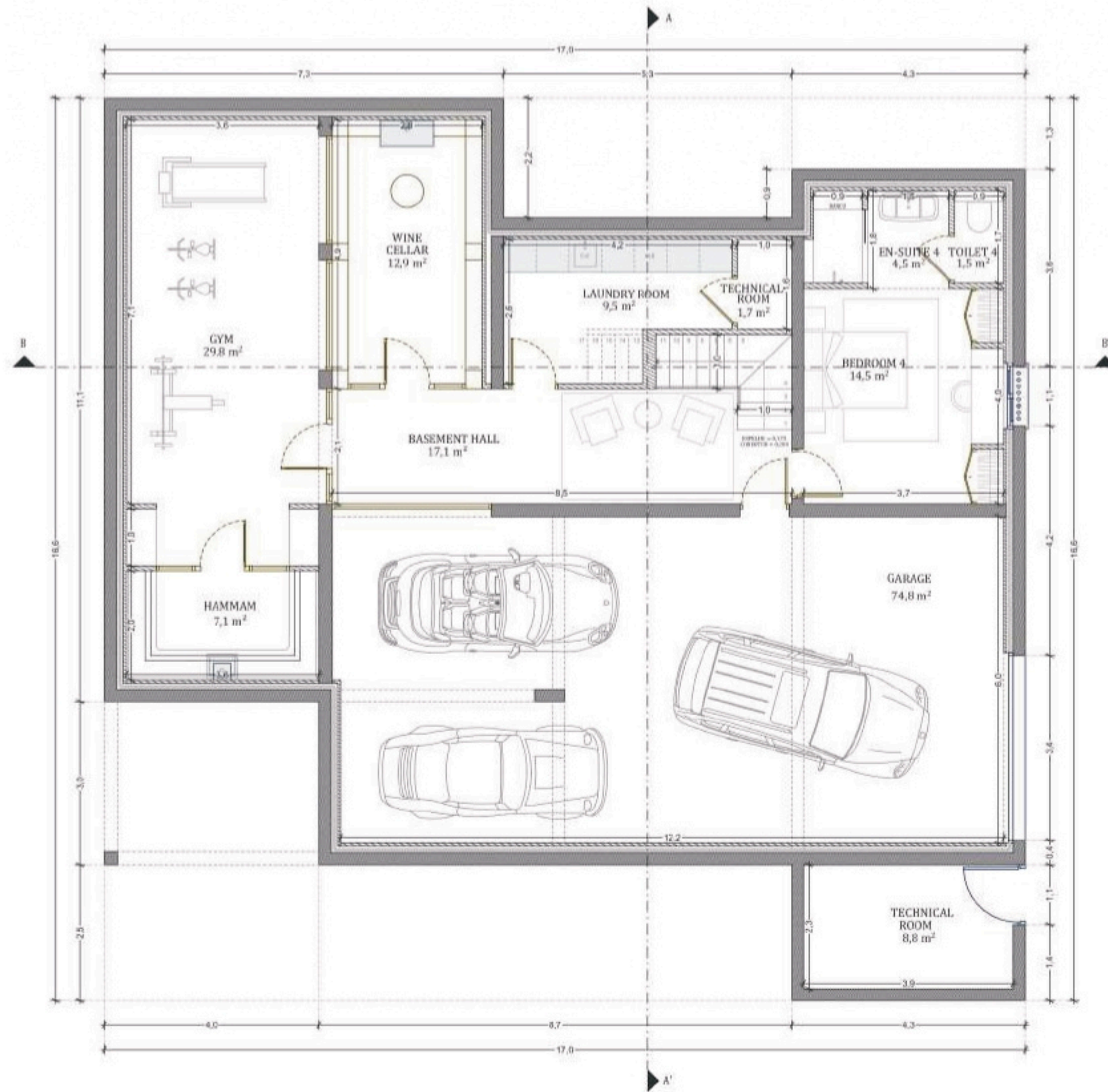
Ensuite Bedroom 4	20.5 m <sup>2</sup>
Corridor	17.1 m <sup>2</sup>
Laundry	9.5 m <sup>2</sup>
Gym, Hammam	36.9 m <sup>2</sup>
Wine Cellar	12.9 m <sup>2</sup>
Garage	74.8 m <sup>2</sup>
Technical room swim Pool	10.5 m <sup>2</sup>

**TOTAL EXTERIOR AREA 88.1 m<sup>2</sup>**

Patio/Fountain	22.7 m <sup>2</sup>
Covered terrace	24.6 m <sup>2</sup>
Pool Deck	4.8 m <sup>2</sup>
Swimming pool	36 m <sup>2</sup>

**TOTAL AREA 436.7 m<sup>2</sup>**

Plot of Land	790.5 m <sup>2</sup>
Altimetry	16,8



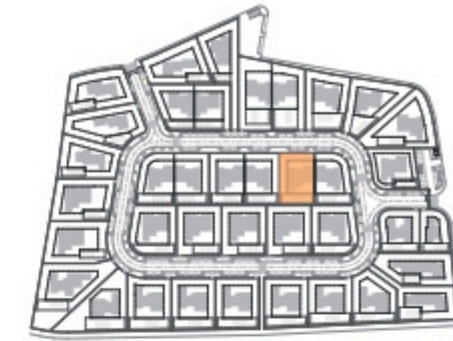
BASEMENT

Kitchen equipment is not contractual. Their position is indicative. Dimensions and areas are given subject to technical construction and execution requirements. The fallout from false ceilings, soffits and pipes are not systematically shown. The thickness of the insulation will be determined by the technical execution study and therefore the data in this plan are only indicative.

## SALES PLAN

VILLA N°31 DOUBLE STOREY

BASEMENT



**TOTAL INTERIOR LIVING AREA 348.6 m<sup>2</sup>**

**GROUND FLOOR 166.4 m<sup>2</sup>**

Living	40.9 m <sup>2</sup>
Dining room	17.2 m <sup>2</sup>
Kitchen	14.4 m <sup>2</sup>
Office	6.2 m <sup>2</sup>
Storeroom Pantry	5.1 m <sup>2</sup>
Ensuite Bedroom 1	20.5 m <sup>2</sup>
Bedroom 1 Dressing	2.8 m <sup>2</sup>
Ensuite Bedroom 2	26.7 m <sup>2</sup>
Bedroom 2 Dressing	4.4 m <sup>2</sup>
Ensuite Bedroom 3	20.8 m <sup>2</sup>
Guest toilet	1.9 m <sup>2</sup>
Lobby	5.5 m <sup>2</sup>

**BASEMENT 182.2 m<sup>2</sup>**

Ensuite Bedroom 4	20.5 m <sup>2</sup>
Corridor	17.1 m <sup>2</sup>
Laundry	9.5 m <sup>2</sup>
Gym, Hammam	36.9 m <sup>2</sup>
Wine Cellar	12.9 m <sup>2</sup>
Garage	74.8 m <sup>2</sup>
Technical room swim Pool	10.5 m <sup>2</sup>

**TOTAL EXTERIOR AREA 88.1 m<sup>2</sup>**

Patio/Fountain	22.7 m <sup>2</sup>
Covered terrace	24.6 m <sup>2</sup>
Pool Deck	4.8 m <sup>2</sup>
Swimming pool	36 m <sup>2</sup>

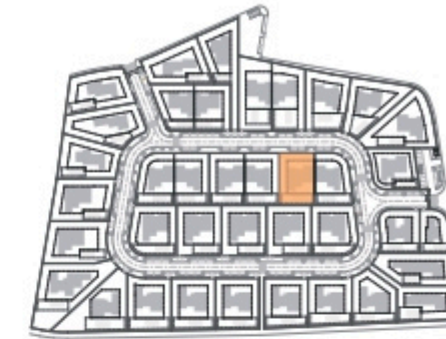
**TOTAL AREA 436.7 m<sup>2</sup>**

Plot of Land	790.5 m <sup>2</sup>
Altimetry	16,8

# SALES PLAN

VILLA N°31 DOUBLE STOREY

SECTIONAL PLAN



SECTION AA'



SECTION BB'



PATIO

Kitchen equipment is not contractual. Their position is indicative. Dimensions and areas are given subject to technical construction and execution requirements. The fallout from false ceilings, soffits and pipes are not systematically shown. The thickness of the insulation will be determined by the technical execution study and therefore the data in this plan are only indicative.

**TOTAL INTERIOR LIVING AREA 348.6 m<sup>2</sup>**

**GROUND FLOOR 166.4 m<sup>2</sup>**

Living	40.9 m <sup>2</sup>
Dining room	17.2 m <sup>2</sup>
Kitchen	14.4 m <sup>2</sup>
Office	6.2 m <sup>2</sup>
Storeroom Pantry	5.1 m <sup>2</sup>
Ensuite Bedroom 1	20.5 m <sup>2</sup>
Bedroom 1 Dressing	2.8 m <sup>2</sup>
Ensuite Bedroom 2	26.7 m <sup>2</sup>
Bedroom 2 Dressing	4.4 m <sup>2</sup>
Ensuite Bedroom 3	20.8 m <sup>2</sup>
Guest toilet	1.9 m <sup>2</sup>
Lobby	5.5 m <sup>2</sup>

**BASEMENT 182.2 m<sup>2</sup>**

Ensuite Bedroom 4	20.5 m <sup>2</sup>
Corridor	17.1 m <sup>2</sup>
Laundry	9.5 m <sup>2</sup>
Gym, Hammam	36.9 m <sup>2</sup>
Wine Cellar	12.9 m <sup>2</sup>
Garage	74.8 m <sup>2</sup>
Technical room swim Pool	10.5 m <sup>2</sup>

**TOTAL EXTERIOR AREA 88.1 m<sup>2</sup>**

Patio/Fountain	22.7 m <sup>2</sup>
Covered terrace	24.6 m <sup>2</sup>
Pool Deck	4.8 m <sup>2</sup>
Swimming pool	36 m <sup>2</sup>

**TOTAL AREA 436.7 m<sup>2</sup>**

Plot of Land	790.5 m <sup>2</sup>
Altimetry	16,8



NORTH



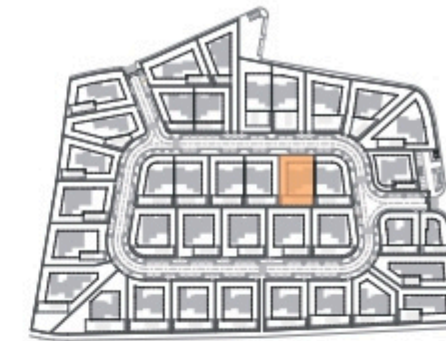
EAST

Kitchen equipment is not contractual. Their position is indicative. Dimensions and areas are given subject to technical construction and execution requirements.  
 The fallout from false ceilings, soffits and pipes are not systematically shown.  
 The thickness of the insulation will be determined by the technical execution study and therefore the data in this plan are only indicative.

## SALES PLAN

VILLA N°31 DOUBLE STOREY

ELEVATIONS



**TOTAL INTERIOR LIVING AREA 348.6 m<sup>2</sup>**

**GROUND FLOOR 166.4 m<sup>2</sup>**

Living	40.9 m <sup>2</sup>
Dining room	17.2 m <sup>2</sup>
Kitchen	14.4 m <sup>2</sup>
Office	6.2 m <sup>2</sup>
Storeroom Pantry	5.1 m <sup>2</sup>
Ensuite Bedroom 1	20.5 m <sup>2</sup>
Bedroom 1 Dressing	2.8 m <sup>2</sup>
Ensuite Bedroom 2	26.7 m <sup>2</sup>
Bedroom 2 Dressing	4.4 m <sup>2</sup>
Ensuite Bedroom 3	20.8 m <sup>2</sup>
Guest toilet	1.9 m <sup>2</sup>
Lobby	5.5 m <sup>2</sup>

**BASEMENT 182.2 m<sup>2</sup>**

Ensuite Bedroom 4	20.5 m <sup>2</sup>
Corridor	17.1 m <sup>2</sup>
Laundry	9.5 m <sup>2</sup>
Gym, Hammam	36.9 m <sup>2</sup>
Wine Cellar	12.9 m <sup>2</sup>
Garage	74.8 m <sup>2</sup>
Technical room swim Pool	10.5 m <sup>2</sup>

**TOTAL EXTERIOR AREA 88.1 m<sup>2</sup>**

Patio/Fountain	22.7 m <sup>2</sup>
Covered terrace	24.6 m <sup>2</sup>
Pool Deck	4.8 m <sup>2</sup>
Swimming pool	36 m <sup>2</sup>

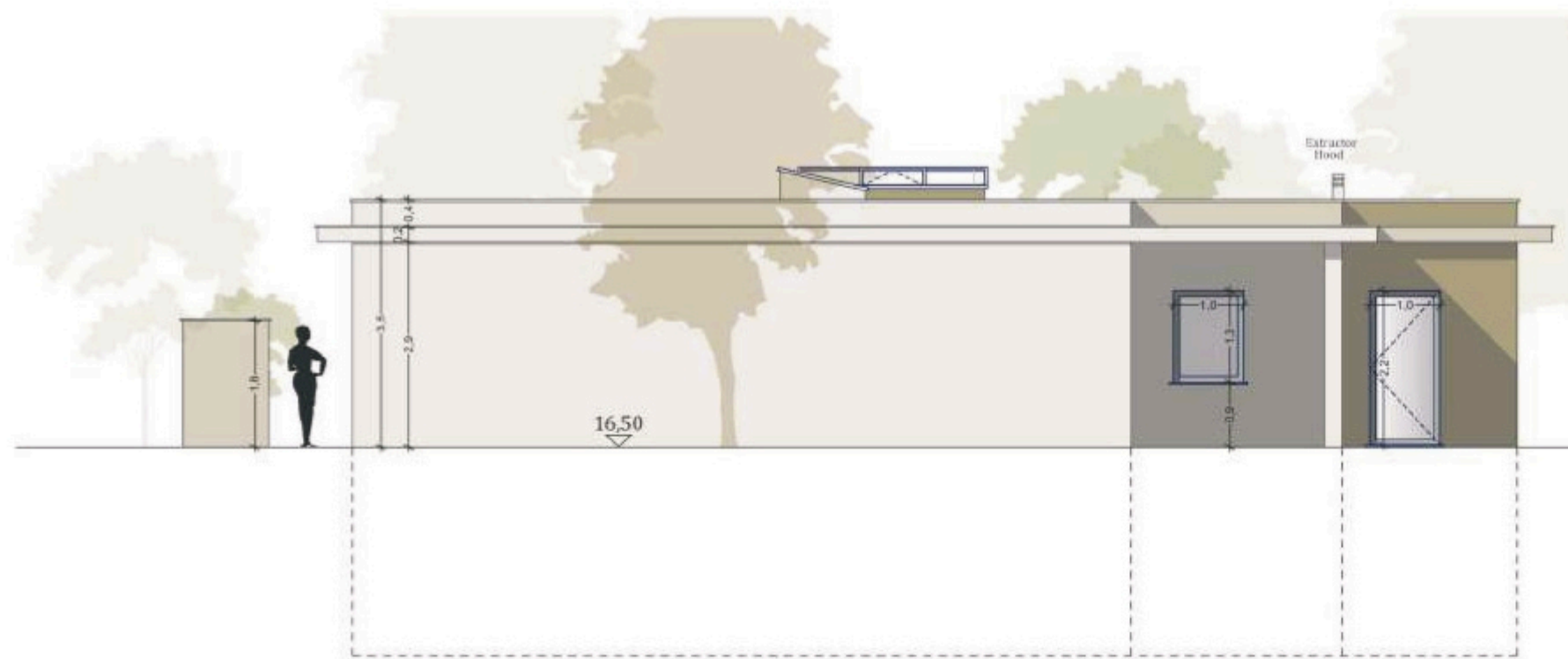
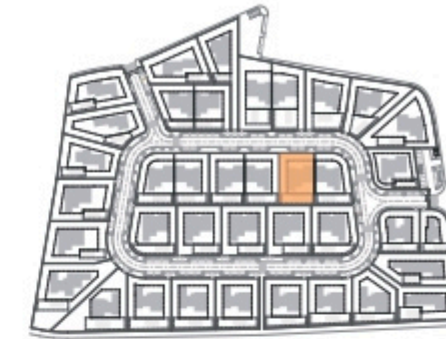
**TOTAL AREA 436.7 m<sup>2</sup>**

Plot of Land	790.5 m <sup>2</sup>
Altimetry	16,8

# SALES PLAN

VILLA N°31 DOUBLE STOREY

ELEVATIONS



SOUTH



WEST

Kitchen equipment is not contractual. Their position is indicative. Dimensions and areas are given subject to technical construction and execution requirements. The fallout from false ceilings, soffits and pipes are not systematically shown. The thickness of the insulation will be determined by the technical execution study and therefore the data in this plan are only indicative.

**TOTAL INTERIOR LIVING AREA 348.6 m<sup>2</sup>**

**GROUND FLOOR 166.4 m<sup>2</sup>**

Living	40.9 m <sup>2</sup>
Dining room	17.2 m <sup>2</sup>
Kitchen	14.4 m <sup>2</sup>
Office	6.2 m <sup>2</sup>
Storeroom Pantry	5.1 m <sup>2</sup>
Ensuite Bedroom 1	20.5 m <sup>2</sup>
Bedroom 1 Dressing	2.8 m <sup>2</sup>
Ensuite Bedroom 2	26.7 m <sup>2</sup>
Bedroom 2 Dressing	4.4 m <sup>2</sup>
Ensuite Bedroom 3	20.8 m <sup>2</sup>
Guest toilet	1.9 m <sup>2</sup>
Lobby	5.5 m <sup>2</sup>

**BASEMENT 182.2 m<sup>2</sup>**

Ensuite Bedroom 4	20.5 m <sup>2</sup>
Corridor	17.1 m <sup>2</sup>
Laundry	9.5 m <sup>2</sup>
Gym, Hammam	36.9 m <sup>2</sup>
Wine Cellar	12.9 m <sup>2</sup>
Garage	74.8 m <sup>2</sup>
Technical room swim Pool	10.5 m <sup>2</sup>

**TOTAL EXTERIOR AREA 88.1 m<sup>2</sup>**

Patio/Fountain	22.7 m <sup>2</sup>
Covered terrace	24.6 m <sup>2</sup>
Pool Deck	4.8 m <sup>2</sup>
Swimming pool	36 m <sup>2</sup>

**TOTAL AREA 436.7 m<sup>2</sup>**

Plot of Land	790.5 m <sup>2</sup>
Altimetry	16,8