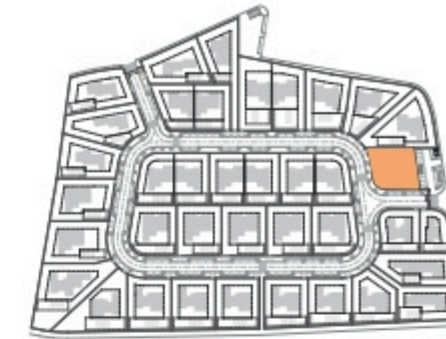


# SALES PLAN

VILLA Nº18 DOUBLE STOREY

SITE PLAN



Kitchen equipment is not contractual. Their position is indicative. Dimensions and areas are given subject to technical construction and execution requirements.  
The fallout from false ceilings, soffits and pipes are not systematically shown.  
The thickness of the insulation will be determined by the technical execution study and therefore the data in this plan are only indicative.

**TOTAL INTERIOR LIVING AREA 325.9 m<sup>2</sup>**

**GROUND FLOOR 159.9 m<sup>2</sup>**

Living	39.7 m <sup>2</sup>
Dining room	16.6 m <sup>2</sup>
Kitchen	13.7 m <sup>2</sup>
Office	5.9 m <sup>2</sup>
Storeroom	4.8 m <sup>2</sup>
Ensuite Bedroom 1	21 m <sup>2</sup>
Ensuite Bedroom 2	20 m <sup>2</sup>
Dressing Ensuite Bedroom 2	3 m <sup>2</sup>
Ensuite Bedroom 3	24.7 m <sup>2</sup>
Dressing Ensuite Bedroom 3	3.4 m <sup>2</sup>
Guest toilet	1.9 m <sup>2</sup>
Lobby, Hallway	5.2 m <sup>2</sup>

**BASEMENT 166 m<sup>2</sup>**

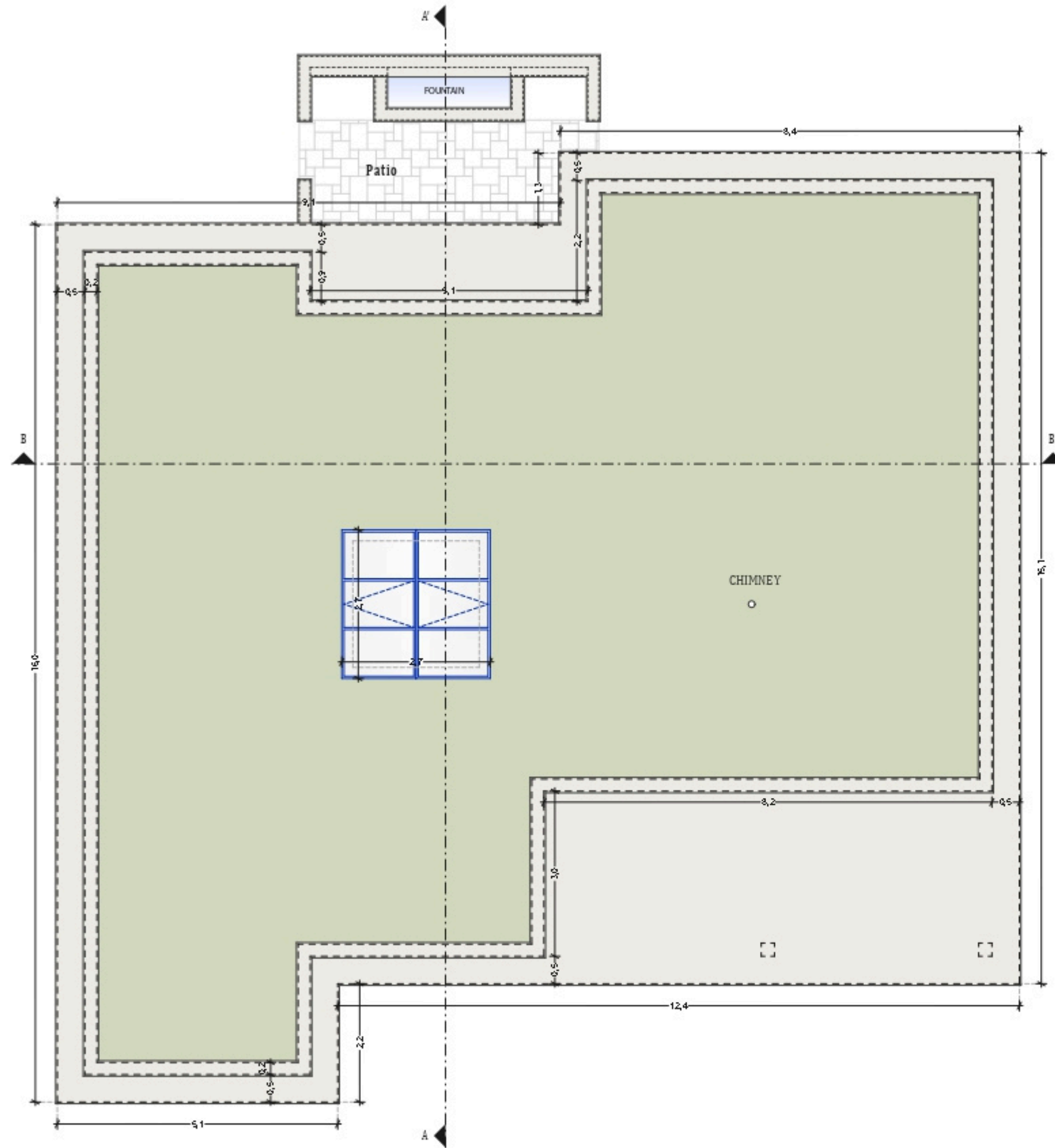
Hallway	16.6 m <sup>2</sup>
Ensuite Bedroom 4	19.4 m <sup>2</sup>
Laundry	8.8 m <sup>2</sup>
Gym, Hammam	37 m <sup>2</sup>
Wine Cellar	12.9 m <sup>2</sup>
Garage	71.3 m <sup>2</sup>
Technical room swim Pool	8.8 m <sup>2</sup>

**TOTAL EXTERIOR AREA 85.9 m<sup>2</sup>**

Patio/Fountain	20.8 m <sup>2</sup>
Covered terrace	24.3 m <sup>2</sup>
Pool Deck	4.8 m <sup>2</sup>
Swimming pool	36 m <sup>2</sup>

**TOTAL AREA 411.8 m<sup>2</sup>**

Plot of Land	803.5 m <sup>2</sup>
Altimetry	14.5



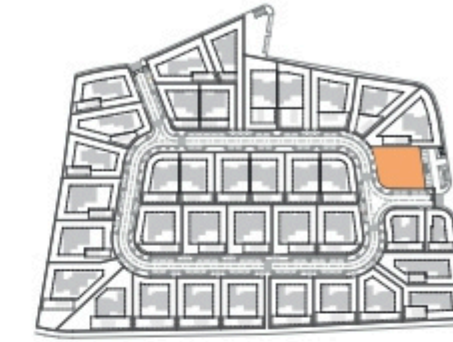
Roof Plan

Kitchen equipment is not contractual. Their position is indicative. Dimensions and areas are given subject to technical construction and execution requirements.  
 The fallout from false ceilings, soffits and pipes are not systematically shown.  
 The thickness of the insulation will be determined by the technical execution study and therefore the data in this plan are only indicative.

## SALES PLAN

VILLA N°18 DOUBLE STOREY

FLOOR COVERING PLAN



**TOTAL INTERIOR LIVING AREA 325.9 m<sup>2</sup>**

**GROUND FLOOR 159.9 m<sup>2</sup>**

Living	39.7 m <sup>2</sup>
Dining room	16.6 m <sup>2</sup>
Kitchen	13.7 m <sup>2</sup>
Office	5.9 m <sup>2</sup>
Storeroom	4.8 m <sup>2</sup>
Ensuite Bedroom 1	21 m <sup>2</sup>
Ensuite Bedroom 2	20 m <sup>2</sup>
Dressing Ensuite Bedroom 2	3 m <sup>2</sup>
Ensuite Bedroom 3	24.7 m <sup>2</sup>
Dressing Ensuite Bedroom 3	3.4 m <sup>2</sup>
Guest toilet	1.9 m <sup>2</sup>
Lobby, Hallway	5.2 m <sup>2</sup>

**BASEMENT 166 m<sup>2</sup>**

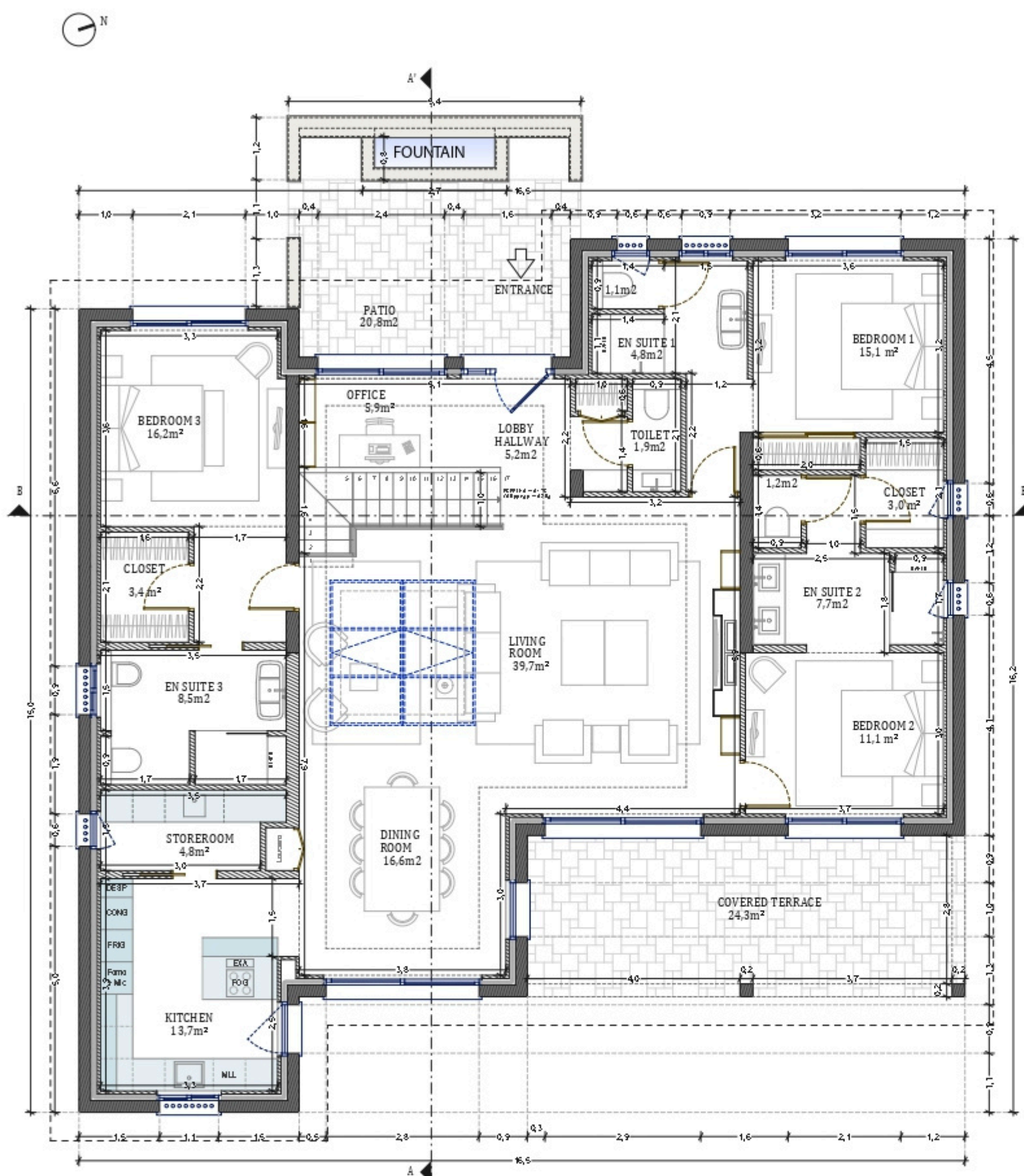
Hallway	16.6 m <sup>2</sup>
Ensuite Bedroom 4	19.4 m <sup>2</sup>
Laundry	8.8 m <sup>2</sup>
Gym, Hammam	37 m <sup>2</sup>
Wine Cellar	12.9 m <sup>2</sup>
Garage	71.3 m <sup>2</sup>
Technical room swim Pool	8.8 m <sup>2</sup>

**TOTAL EXTERIOR AREA 85.9 m<sup>2</sup>**

Patio/Fountain	20.8 m <sup>2</sup>
Covered terrace	24.3 m <sup>2</sup>
Pool Deck	4.8 m <sup>2</sup>
Swimming pool	36 m <sup>2</sup>

**TOTAL AREA 411.8 m<sup>2</sup>**

Plot of Land	803.5 m <sup>2</sup>
Altimetry	14.5

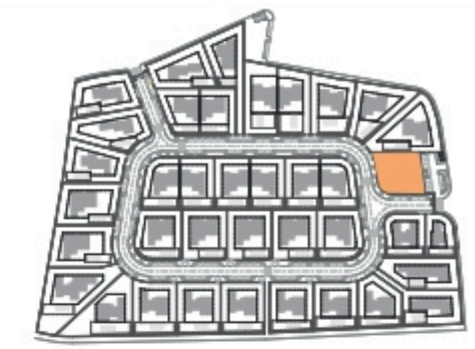


Planta do R/

Kitchen equipment is not contractual. Their position is indicative. Dimensions and areas are given subject to technical construction and execution requirements. The fallout from false ceilings, soffits and pipes are not systematically shown. The thickness of the insulation will be determined by the technical execution study and therefore the data in this plan are only indicative.

## SALES PLAN

VILLA N°18 DOUBLE STOREY | GROUND FLOOR



**TOTAL INTERIOR LIVING AREA 325.9 m<sup>2</sup>**

**GROUND FLOOR 159.9 m<sup>2</sup>**

Living	39.7 m <sup>2</sup>
Dining room	16.6 m <sup>2</sup>
Kitchen	13.7 m <sup>2</sup>
Office	5.9 m <sup>2</sup>
Storeroom	4.8 m <sup>2</sup>
Ensuite Bedroom 1	21 m <sup>2</sup>
Ensuite Bedroom 2	20 m <sup>2</sup>
Dressing Ensuite Bedroom 2	3 m <sup>2</sup>
Ensuite Bedroom 3	24.7 m <sup>2</sup>
Dressing Ensuite Bedroom 3	3.4 m <sup>2</sup>
Guest toilet	1.9 m <sup>2</sup>
Lobby, Hallway	5.2 m <sup>2</sup>

**BASEMENT 166 m<sup>2</sup>**

Hallway	16.6 m <sup>2</sup>
Ensuite Bedroom 4	19.4 m <sup>2</sup>
Laundry	8.8 m <sup>2</sup>
Gym, Hammam	37 m <sup>2</sup>
Wine Cellar	12.9 m <sup>2</sup>
Garage	71.3 m <sup>2</sup>
Technical room swim Pool	8.8 m <sup>2</sup>

**TOTAL EXTERIOR AREA 85.9 m<sup>2</sup>**

Patio/Fountain	20.8 m <sup>2</sup>
Covered terrace	24.3 m <sup>2</sup>
Pool Deck	4.8 m <sup>2</sup>
Swimming pool	36 m <sup>2</sup>

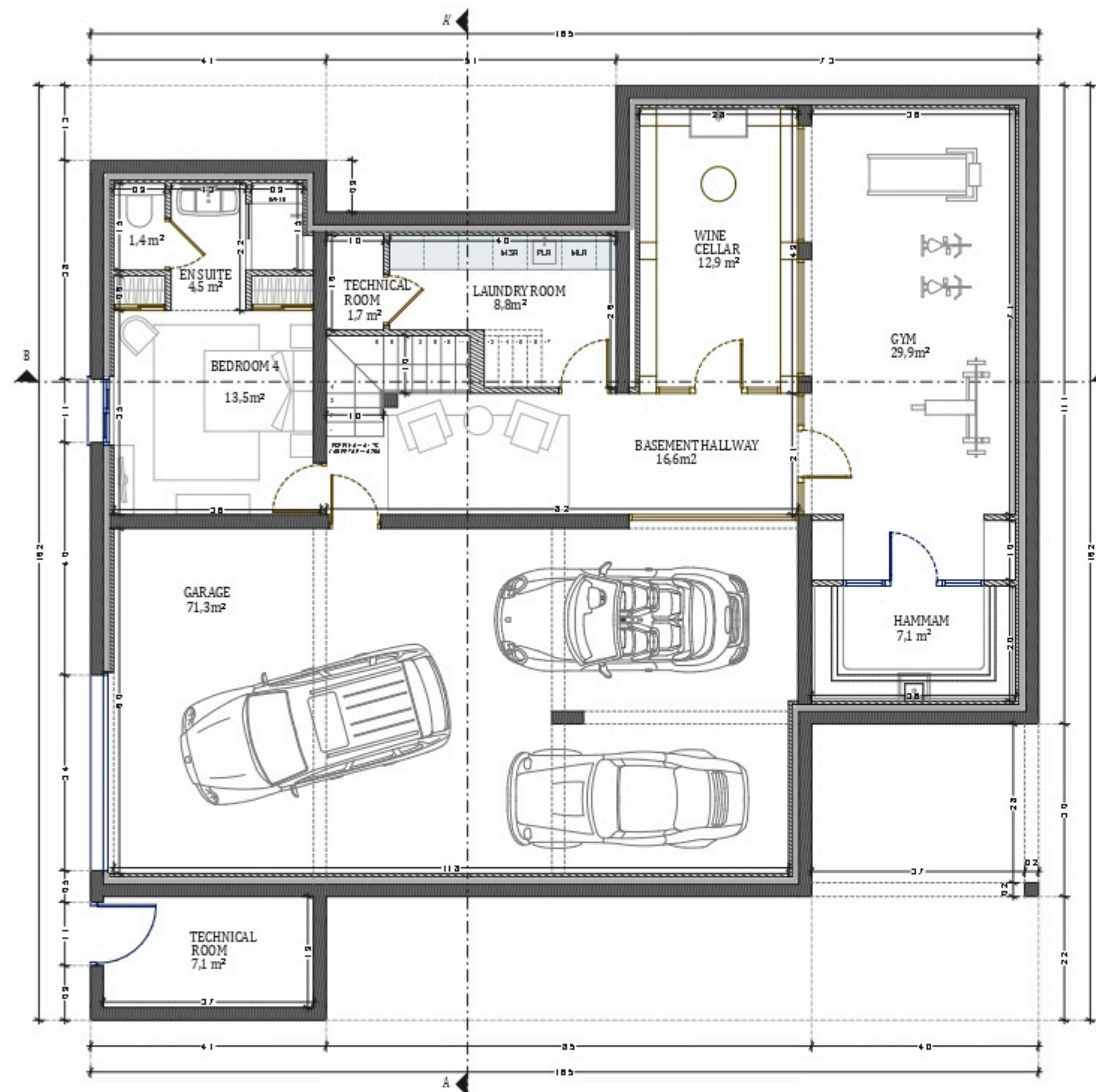
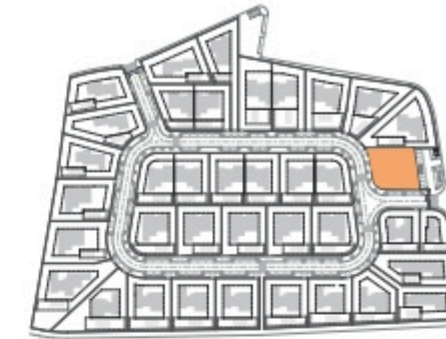
**TOTAL AREA 411.8 m<sup>2</sup>**

Plot of Land	803.5 m <sup>2</sup>
Altimetry	14.5

# SALES PLAN

VILLA N°18 DOUBLE STOREY

BASEMENT



Planta da Cave

Kitchen equipment is not contractual. Their position is indicative. Dimensions and areas are given subject to technical construction and execution requirements. The fallout from false ceilings, soffits and pipes are not systematically shown. The thickness of the insulation will be determined by the technical execution study and therefore the data in this plan are only indicative.

**TOTAL INTERIOR LIVING AREA 325.9 m<sup>2</sup>**

**GROUND FLOOR 159.9 m<sup>2</sup>**

Living	39.7 m <sup>2</sup>
Dining room	16.6 m <sup>2</sup>
Kitchen	13.7 m <sup>2</sup>
Office	5.9 m <sup>2</sup>
Storeroom	4.8 m <sup>2</sup>
Ensuite Bedroom 1	21 m <sup>2</sup>
Ensuite Bedroom 2	20 m <sup>2</sup>
Dressing Ensuite Bedroom 2	3 m <sup>2</sup>
Ensuite Bedroom 3	24.7 m <sup>2</sup>
Dressing Ensuite Bedroom 3	3.4 m <sup>2</sup>
Guest toilet	1.9 m <sup>2</sup>
Lobby, Hallway	5.2 m <sup>2</sup>

**BASEMENT 166 m<sup>2</sup>**

Hallway	16.6 m <sup>2</sup>
Ensuite Bedroom 4	19.4 m <sup>2</sup>
Laundry	8.8 m <sup>2</sup>
Gym, Hammam	37 m <sup>2</sup>
Wine Cellar	12.9 m <sup>2</sup>
Garage	71.3 m <sup>2</sup>
Technical room swim Pool	8.8 m <sup>2</sup>

**TOTAL EXTERIOR AREA 85.9 m<sup>2</sup>**

Patio/Fountain	20.8 m <sup>2</sup>
Covered terrace	24.3 m <sup>2</sup>
Pool Deck	4.8 m <sup>2</sup>
Swimming pool	36 m <sup>2</sup>

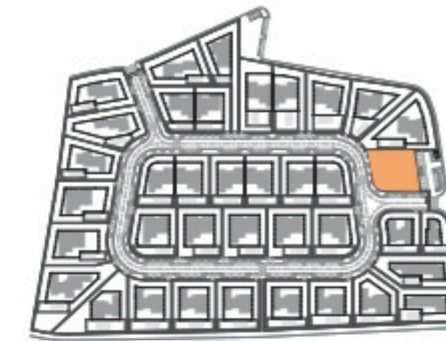
**TOTAL AREA 411.8 m<sup>2</sup>**

Plot of Land	803.5 m <sup>2</sup>
Altimetry	14.5

# SALES PLAN

VILLA N°18 DOUBLE STOREY

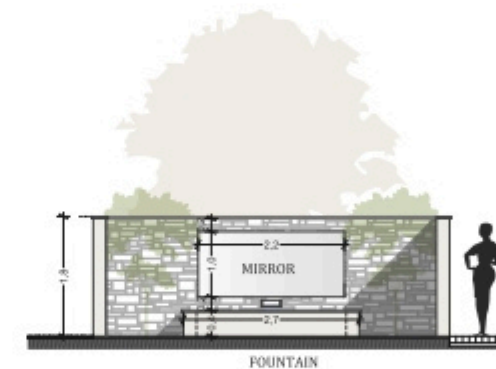
SECTIONAL PLAN



Corte AA'



Corte BB'



Corte - Patio

Kitchen equipment is not contractual. Their position is indicative. Dimensions and areas are given subject to technical construction and execution requirements. The fallout from false ceilings, soffits and pipes are not systematically shown. The thickness of the insulation will be determined by the technical execution study and therefore the data in this plan are only indicative.

**TOTAL INTERIOR LIVING AREA 325.9 m<sup>2</sup>**

**GROUND FLOOR 159.9 m<sup>2</sup>**

Living	39.7 m <sup>2</sup>
Dining room	16.6 m <sup>2</sup>
Kitchen	13.7 m <sup>2</sup>
Office	5.9 m <sup>2</sup>
Storeroom	4.8 m <sup>2</sup>
Ensuite Bedroom 1	21 m <sup>2</sup>
Ensuite Bedroom 2	20 m <sup>2</sup>
Dressing Ensuite Bedroom 2	3 m <sup>2</sup>
Ensuite Bedroom 3	24.7 m <sup>2</sup>
Dressing Ensuite Bedroom 3	3.4 m <sup>2</sup>
Guest toilet	1.9 m <sup>2</sup>
Lobby, Hallway	5.2 m <sup>2</sup>

**BASEMENT 166 m<sup>2</sup>**

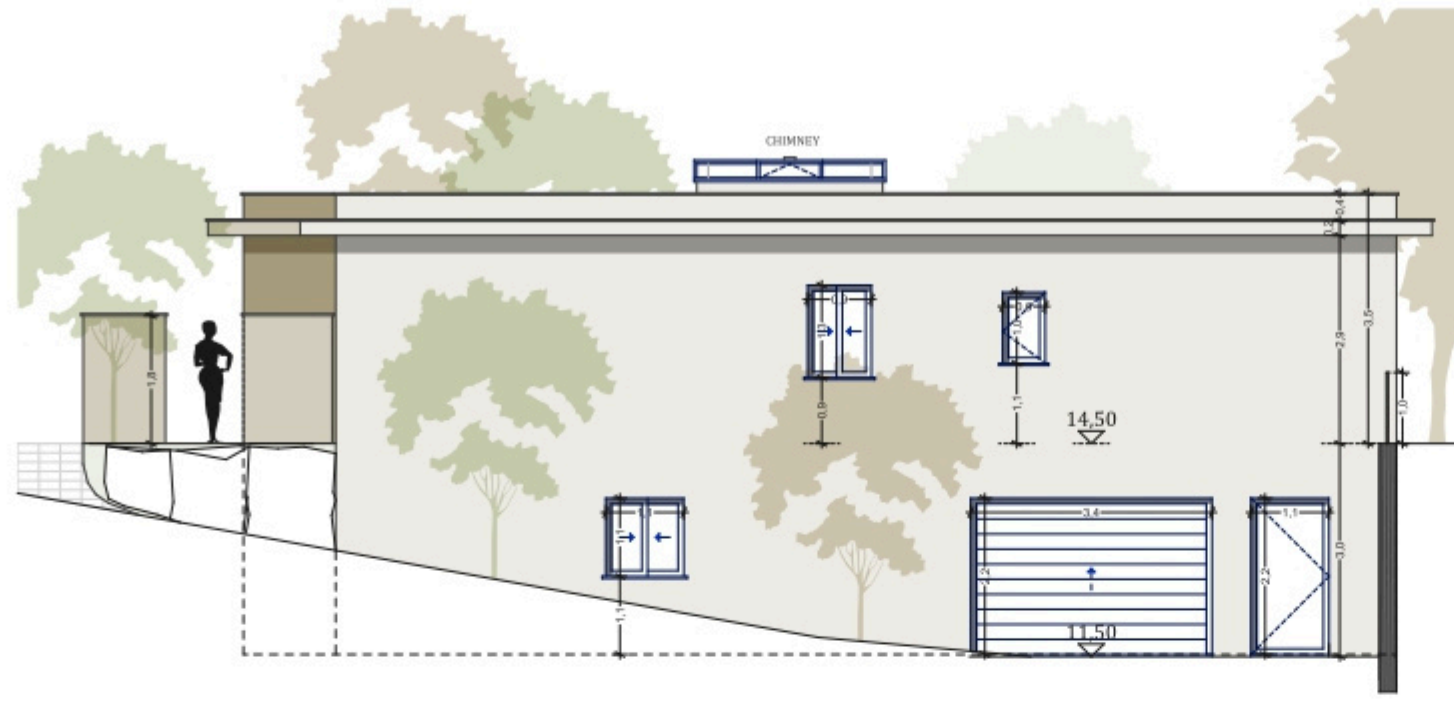
Hallway	16.6 m <sup>2</sup>
Ensuite Bedroom 4	19.4 m <sup>2</sup>
Laundry	8.8 m <sup>2</sup>
Gym, Hammam	37 m <sup>2</sup>
Wine Cellar	12.9 m <sup>2</sup>
Garage	71.3 m <sup>2</sup>
Technical room swim Pool	8.8 m <sup>2</sup>

**TOTAL EXTERIOR AREA 85.9 m<sup>2</sup>**

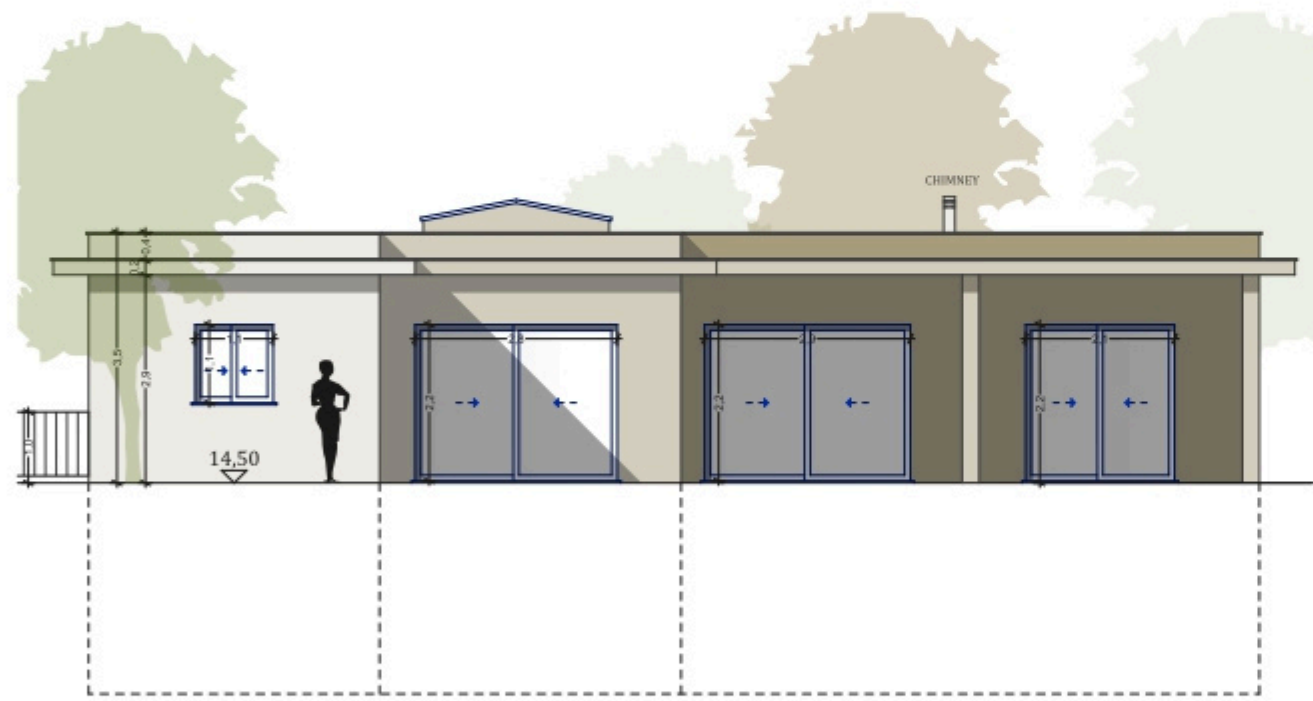
Patio/Fountain	20.8 m <sup>2</sup>
Covered terrace	24.3 m <sup>2</sup>
Pool Deck	4.8 m <sup>2</sup>
Swimming pool	36 m <sup>2</sup>

**TOTAL AREA 411.8 m<sup>2</sup>**

Plot of Land	803.5 m <sup>2</sup>
Altimetry	14.5



Alcado Sul



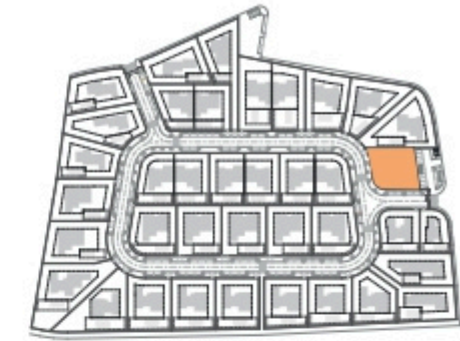
Alcado Este

Kitchen equipment is not contractual. Their position is indicative. Dimensions and areas are given subject to technical construction and execution requirements. The fallout from false ceilings, soffits and pipes are not systematically shown. The thickness of the insulation will be determined by the technical execution study and therefore the data in this plan are only indicative.

## SALES PLAN

VILLA N°18 DOUBLE STOREY

ELEVATIONS



**TOTAL INTERIOR LIVING AREA 325.9 m<sup>2</sup>**

**GROUND FLOOR 159.9 m<sup>2</sup>**

Living	39.7 m <sup>2</sup>
Dining room	16.6 m <sup>2</sup>
Kitchen	13.7 m <sup>2</sup>
Office	5.9 m <sup>2</sup>
Storeroom	4.8 m <sup>2</sup>
Ensuite Bedroom 1	21 m <sup>2</sup>
Ensuite Bedroom 2	20 m <sup>2</sup>
Dressing Ensuite Bedroom 2	3 m <sup>2</sup>
Ensuite Bedroom 3	24.7 m <sup>2</sup>
Dressing Ensuite Bedroom 3	3.4 m <sup>2</sup>
Guest toilet	1.9 m <sup>2</sup>
Lobby, Hallway	5.2 m <sup>2</sup>

**BASEMENT 166 m<sup>2</sup>**

Hallway	16.6 m <sup>2</sup>
Ensuite Bedroom 4	19.4 m <sup>2</sup>
Laundry	8.8 m <sup>2</sup>
Gym, Hammam	37 m <sup>2</sup>
Wine Cellar	12.9 m <sup>2</sup>
Garage	71.3 m <sup>2</sup>
Technical room swim Pool	8.8 m <sup>2</sup>

**TOTAL EXTERIOR AREA 85.9 m<sup>2</sup>**

Patio/Fountain	20.8 m <sup>2</sup>
Covered terrace	24.3 m <sup>2</sup>
Pool Deck	4.8 m <sup>2</sup>
Swimming pool	36 m <sup>2</sup>

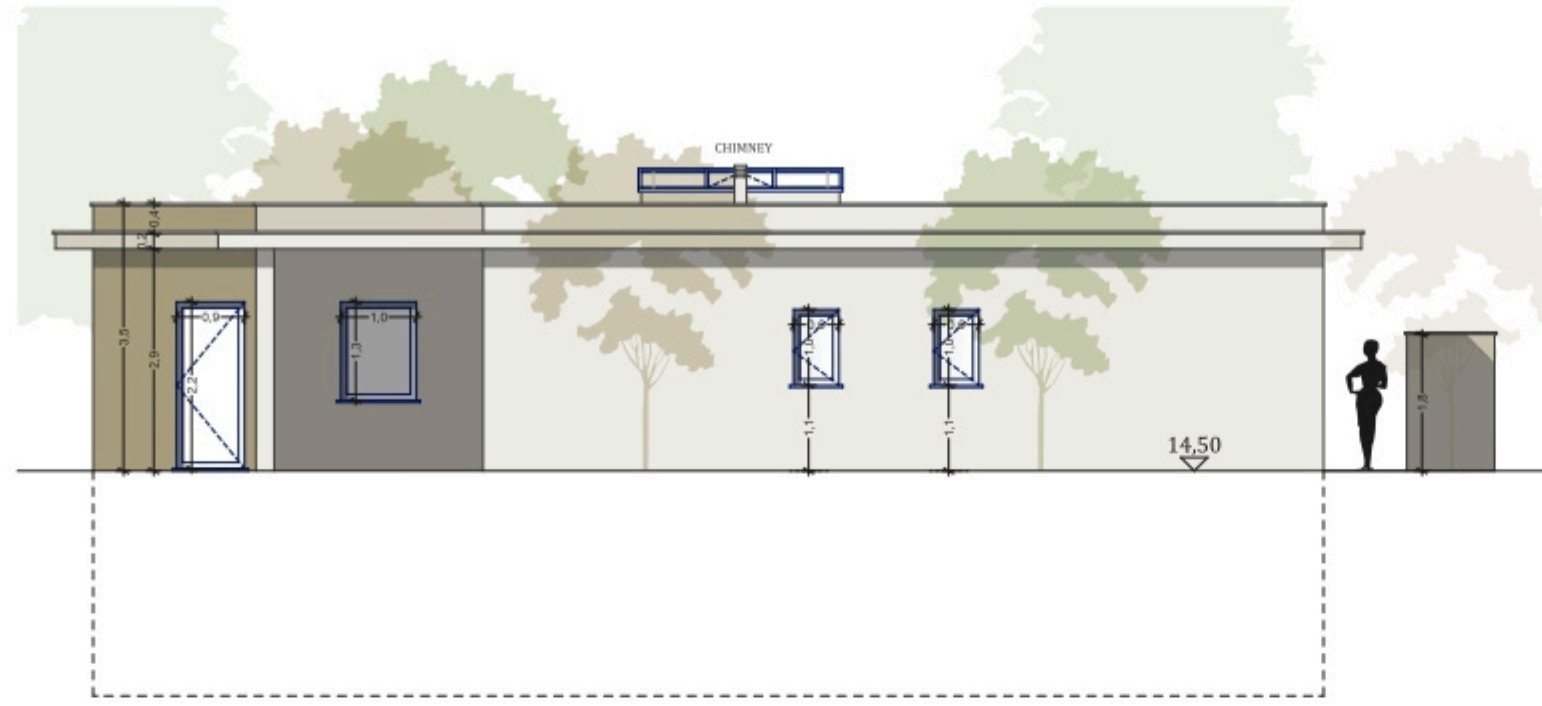
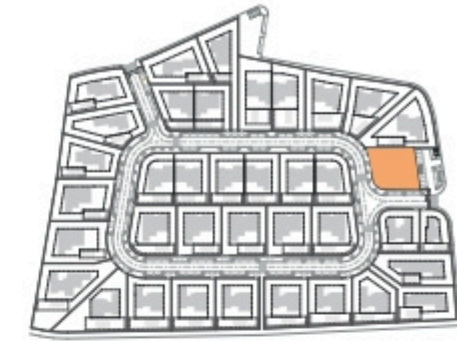
**TOTAL AREA 411.8 m<sup>2</sup>**

Plot of Land	803.5 m <sup>2</sup>
Altimetry	14.5

# SALES PLAN

VILLA N°18 DOUBLE STOREY

ELEVATIONS



Alcado Norte



Alcado Oeste

Kitchen equipment is not contractual. Their position is indicative. Dimensions and areas are given subject to technical construction and execution requirements. The fallout from false ceilings, soffits and pipes are not systematically shown. The thickness of the insulation will be determined by the technical execution study and therefore the data in this plan are only indicative.

**TOTAL INTERIOR LIVING AREA 325.9 m<sup>2</sup>**

**GROUND FLOOR 159.9 m<sup>2</sup>**

Living	39.7 m <sup>2</sup>
Dining room	16.6 m <sup>2</sup>
Kitchen	13.7 m <sup>2</sup>
Office	5.9 m <sup>2</sup>
Storeroom	4.8 m <sup>2</sup>
Ensuite Bedroom 1	21 m <sup>2</sup>
Ensuite Bedroom 2	20 m <sup>2</sup>
Dressing Ensuite Bedroom 2	3 m <sup>2</sup>
Ensuite Bedroom 3	24.7 m <sup>2</sup>
Dressing Ensuite Bedroom 3	3.4 m <sup>2</sup>
Guest toilet	1.9 m <sup>2</sup>
Lobby, Hallway	5.2 m <sup>2</sup>

**BASEMENT 166 m<sup>2</sup>**

Hallway	16.6 m <sup>2</sup>
Ensuite Bedroom 4	19.4 m <sup>2</sup>
Laundry	8.8 m <sup>2</sup>
Gym, Hammam	37 m <sup>2</sup>
Wine Cellar	12.9 m <sup>2</sup>
Garage	71.3 m <sup>2</sup>
Technical room swim Pool	8.8 m <sup>2</sup>

**TOTAL EXTERIOR AREA 85.9 m<sup>2</sup>**

Patio/Fountain	20.8 m <sup>2</sup>
Covered terrace	24.3 m <sup>2</sup>
Pool Deck	4.8 m <sup>2</sup>
Swimming pool	36 m <sup>2</sup>

**TOTAL AREA 411.8 m<sup>2</sup>**

Plot of Land	803.5 m <sup>2</sup>
Altimetry	14.5