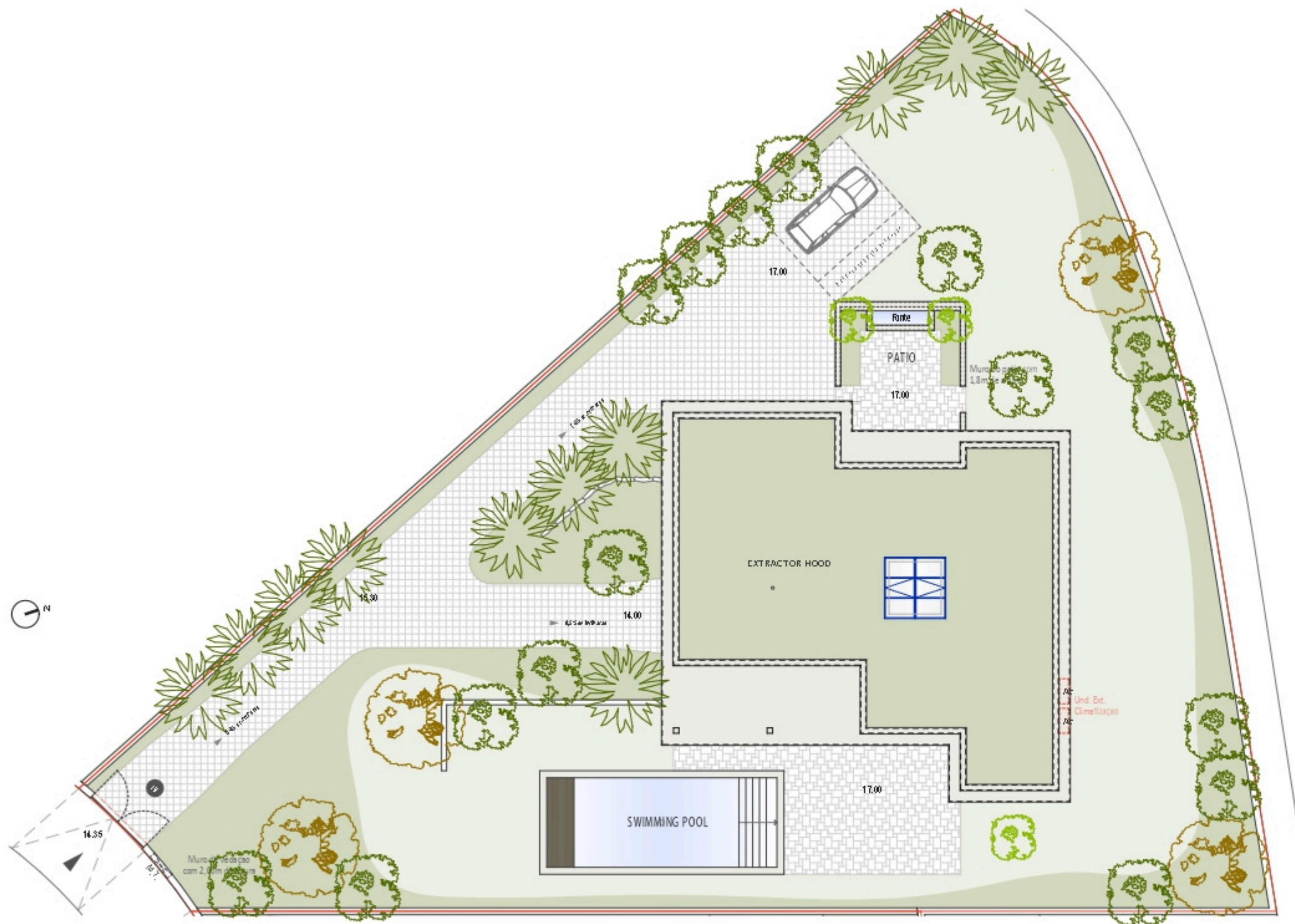
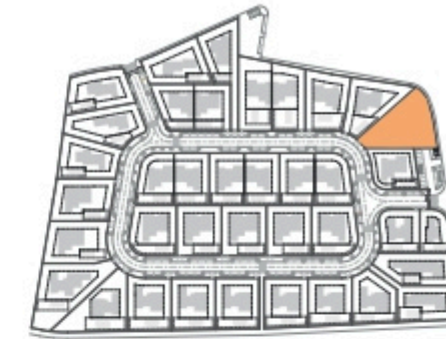


SALES PLAN

VILLA N°19 DOUBLE STOREY

SITE PLAN



Kitchen equipment is not contractual. Their position is indicative. Dimensions and areas are given subject to technical construction and execution requirements.
The fallout from false ceilings, soffits and pipes are not systematically shown.
The thickness of the insulation will be determined by the technical execution study and therefore the data in this plan are only indicative.

TOTAL INTERIOR LIVING AREA 328.8 m²

GROUND FLOOR 167 m²

Living	40.9 m ²
Dining room	17.7 m ²
Kitchen	14.4 m ²
Office	6.2 m ²
Storeroom	5.1 m ²
Ensuite Bedroom 1	21.2 m ²
Ensuite Bedroom 2	20 m ²
Dressing Ensuite Bedroom 2	3 m ²
Ensuite Bedroom 3	26.7 m ²
Dressing Ensuite Bedroom 3	4.4 m ²
Guest toilet	1.9 m ²
Lobby, Hallway	5.5 m ²

BASEMENT 161.8 m²

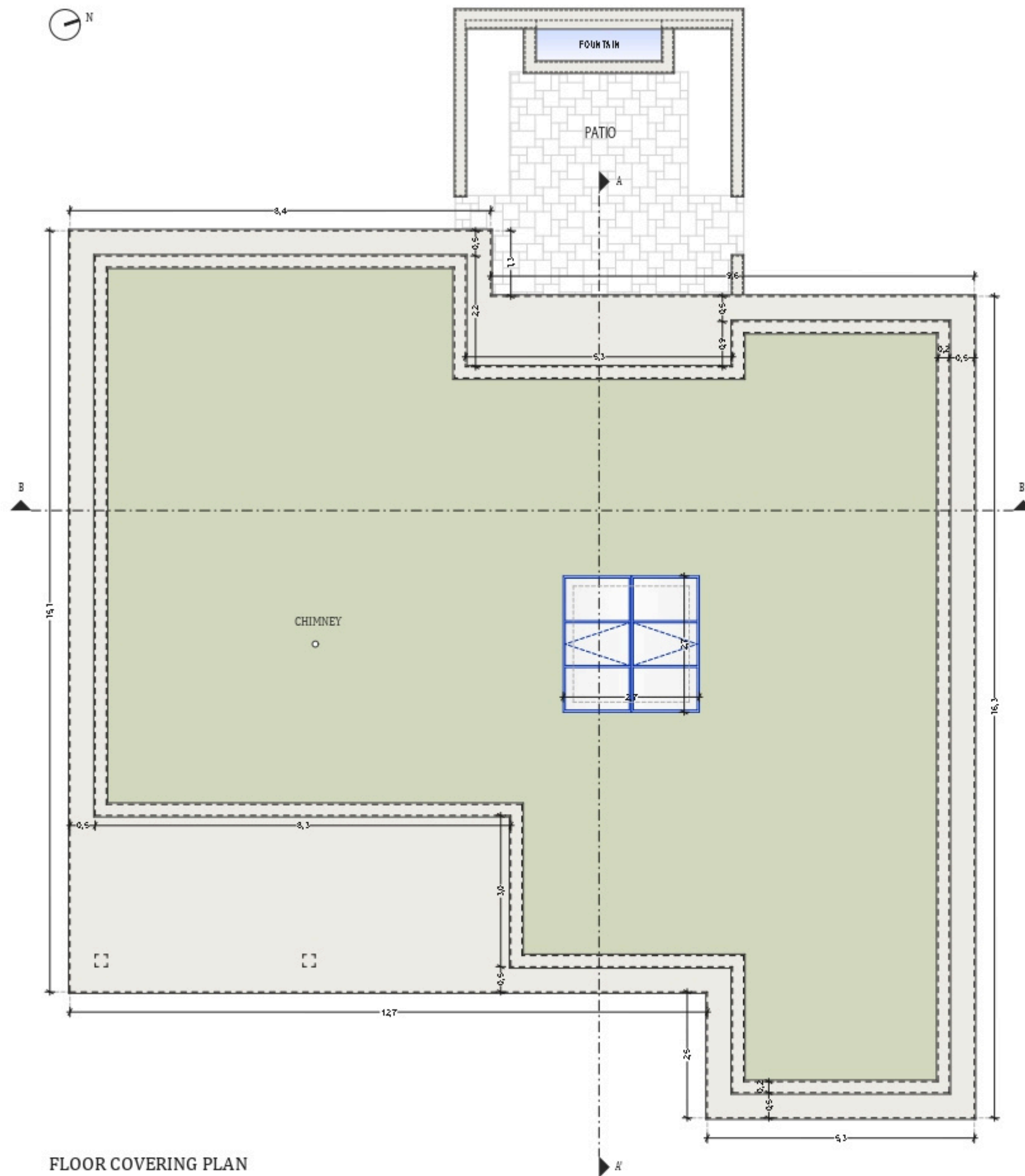
Hallway	17.2 m ²
Ensuite Bedroom 4	17.7 m ²
Laundry	6.9 m ²
Gym, Hammam	21.6 m ²
Wine Cellar	10.2 m ²
Garage	88.2 m ²
Technical room swim Pool	20.9 m ²

TOTAL EXTERIOR AREA 101.1 m²

Patio/Fountain	35.7 m ²
Covered terrace	24.6 m ²
Pool Deck	4.8 m ²
Swimming pool	36 m ²

TOTAL AREA 429.9 m²

Plot of Land	1250.8 m ²
Altimetry	17

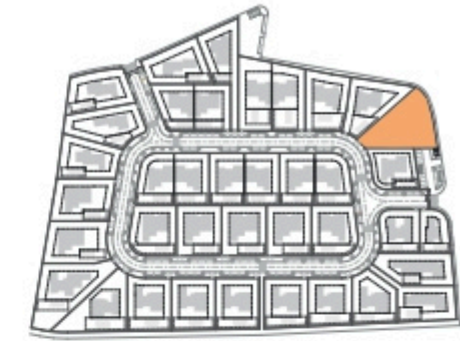


FLOOR COVERING PLAN

Kitchen equipment is not contractual. Their position is indicative. Dimensions and areas are given subject to technical construction and execution requirements.
The fallout from false ceilings, soffits and pipes are not systematically shown.
The thickness of the insulation will be determined by the technical execution study and therefore the data in this plan are only indicative.

SALES PLAN

VILLA N°19 DOUBLE STOREY FLOOR COVERING PLAN



TOTAL INTERIOR LIVING AREA 328.8 m²

GROUND FLOOR 167 m²

Living	40.9 m ²
Dining room	17.7 m ²
Kitchen	14.4 m ²
Office	6.2 m ²
Storeroom	5.1 m ²
Ensuite Bedroom 1	21.2 m ²
Ensuite Bedroom 2	20 m ²
Dressing Ensuite Bedroom 2	3 m ²
Ensuite Bedroom 3	26.7 m ²
Dressing Ensuite Bedroom 3	4.4 m ²
Guest toilet	1.9 m ²
Lobby, Hallway	5.5 m ²

BASEMENT 161.8 m²

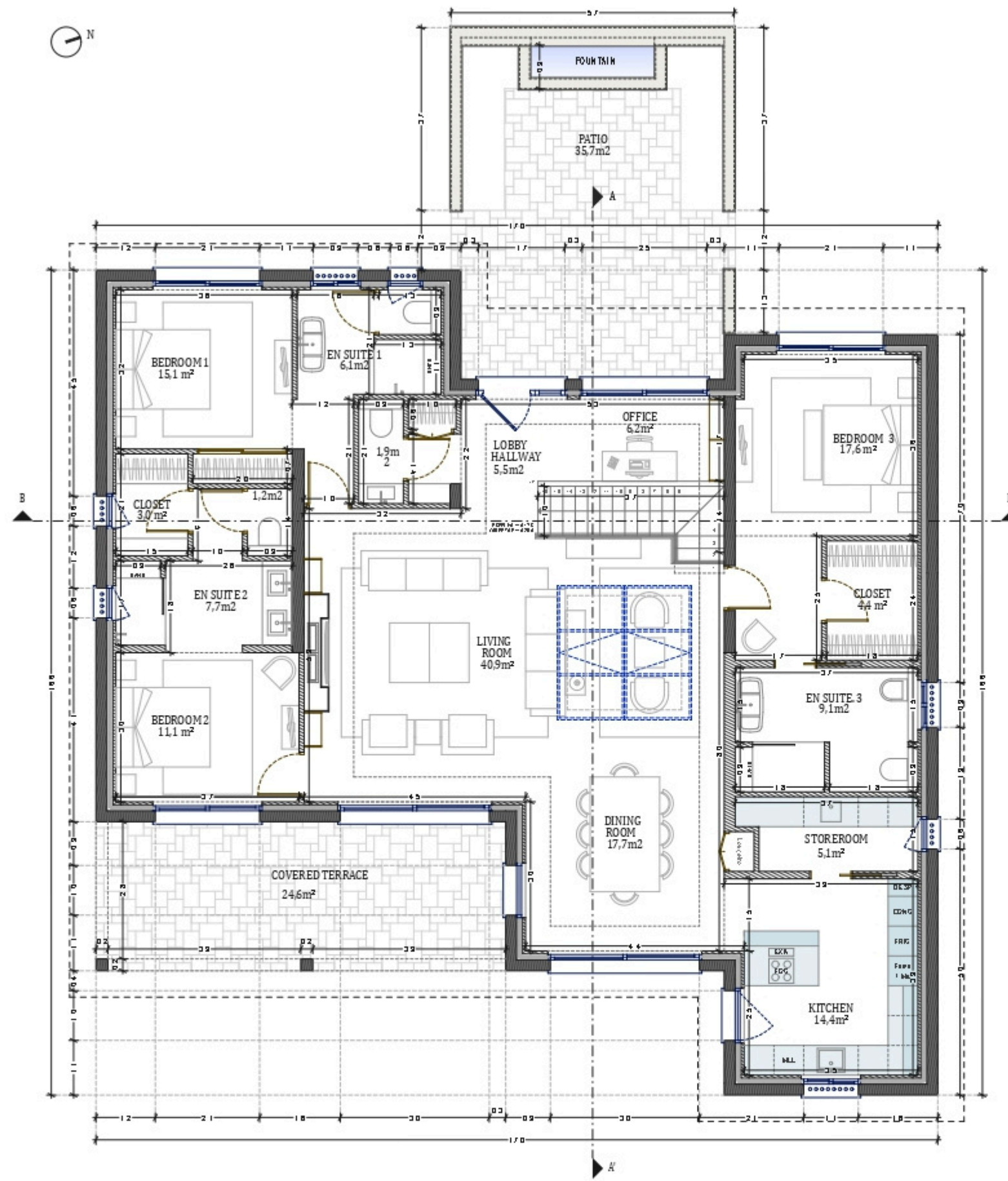
Hallway	17.2 m ²
Ensuite Bedroom 4	17.7 m ²
Laundry	6.9 m ²
Gym, Hammam	21.6 m ²
Wine Cellar	10.2 m ²
Garage	88.2 m ²
Technical room swim Pool	20.9 m ²

TOTAL EXTERIOR AREA 101.1 m²

Patio/Fountain	35.7 m ²
Covered terrace	24.6 m ²
Pool Deck	4.8 m ²
Swimming pool	36 m ²

TOTAL AREA 429.9 m²

Plot of Land	1250.8 m ²
Altimetry	17



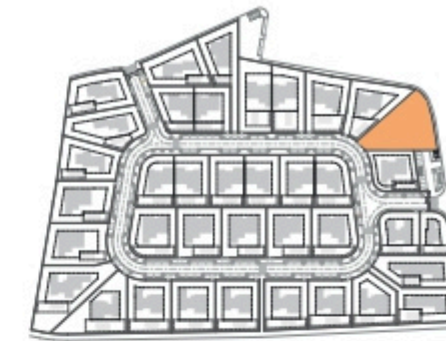
GROUND FLOOR

Kitchen equipment is not contractual. Their position is indicative. Dimensions and areas are given subject to technical construction and execution requirements. The fallout from false ceilings, soffits and pipes are not systematically shown. The thickness of the insulation will be determined by the technical execution study and therefore the data in this plan are only indicative.

SALES PLAN

VILLA N°19 DOUBLE STOREY

GROUND FLOOR



TOTAL INTERIOR LIVING AREA 328.8 m²

GROUND FLOOR 167 m²

Living	40.9 m ²
Dining room	17.7 m ²
Kitchen	14.4 m ²
Office	6.2 m ²
Storeroom	5.1 m ²
Ensuite Bedroom 1	21.2 m ²
Ensuite Bedroom 2	20 m ²
Dressing Ensuite Bedroom 2	3 m ²
Ensuite Bedroom 3	26.7 m ²
Dressing Ensuite Bedroom 3	4.4 m ²
Guest toilet	1.9 m ²
Lobby, Hallway	5.5 m ²

BASEMENT 161.8 m²

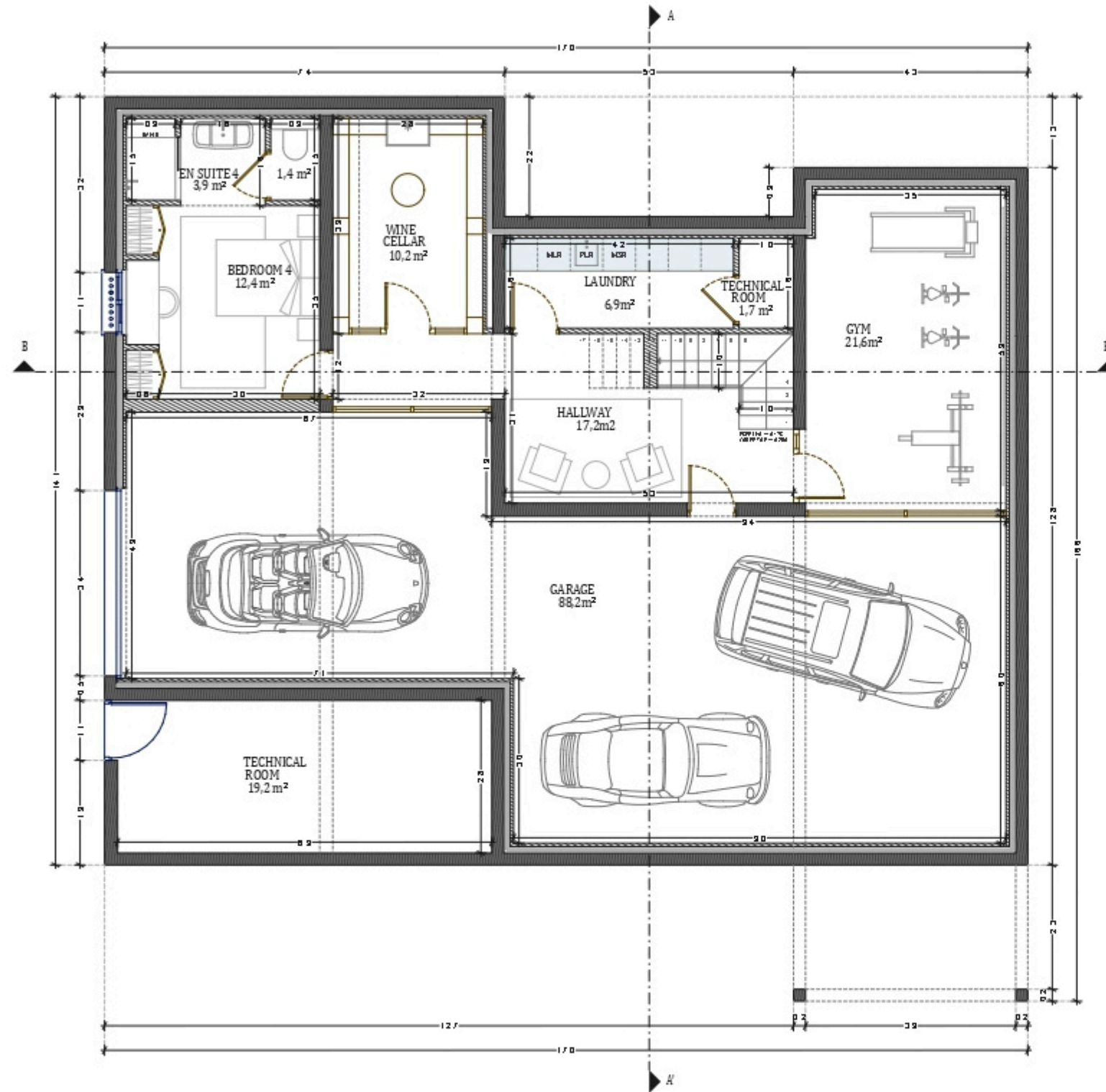
Hallway	17.2 m ²
Ensuite Bedroom 4	17.7 m ²
Laundry	6.9 m ²
Gym, Hammam	21.6 m ²
Wine Cellar	10.2 m ²
Garage	88.2 m ²
Technical room swim Pool	20.9 m ²

TOTAL EXTERIOR AREA 101.1 m²

Patio/Fountain	35.7 m ²
Covered terrace	24.6 m ²
Pool Deck	4.8 m ²
Swimming pool	36 m ²

TOTAL AREA 429.9 m²

Plot of Land	1250.8 m ²
Altimetry	17



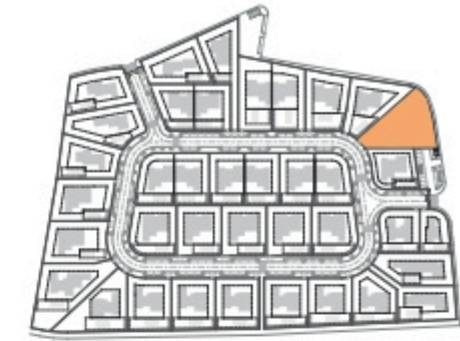
BASEMENT

Kitchen equipment is not contractual. Their position is indicative. Dimensions and areas are given subject to technical construction and execution requirements. The fallout from false ceilings, soffits and pipes are not systematically shown. The thickness of the insulation will be determined by the technical execution study and therefore the data in this plan are only indicative.

SALES PLAN

VILLA N°19 DOUBLE STOREY

BASEMENT



TOTAL INTERIOR LIVING AREA 328.8 m²

GROUND FLOOR 167 m²

Living	40.9 m ²
Dining room	17.7 m ²
Kitchen	14.4 m ²
Office	6.2 m ²
Storeroom	5.1 m ²
Ensuite Bedroom 1	21.2 m ²
Ensuite Bedroom 2	20 m ²
Dressing Ensuite Bedroom 2	3 m ²
Ensuite Bedroom 3	26.7 m ²
Dressing Ensuite Bedroom 3	4.4 m ²
Guest toilet	1.9 m ²
Lobby, Hallway	5.5 m ²

BASEMENT 161.8 m²

Hallway	17.2 m ²
Ensuite Bedroom 4	17.7 m ²
Laundry	6.9 m ²
Gym, Hammam	21.6 m ²
Wine Cellar	10.2 m ²
Garage	88.2 m ²
Technical room swim Pool	20.9 m ²

TOTAL EXTERIOR AREA 101.1 m²

Patio/Fountain	35.7 m ²
Covered terrace	24.6 m ²
Pool Deck	4.8 m ²
Swimming pool	36 m ²

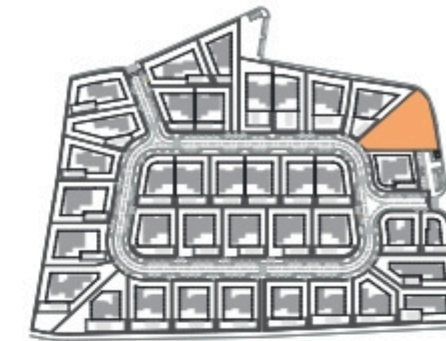
TOTAL AREA 429.9 m²

Plot of Land	1250.8 m ²
Altimetry	17

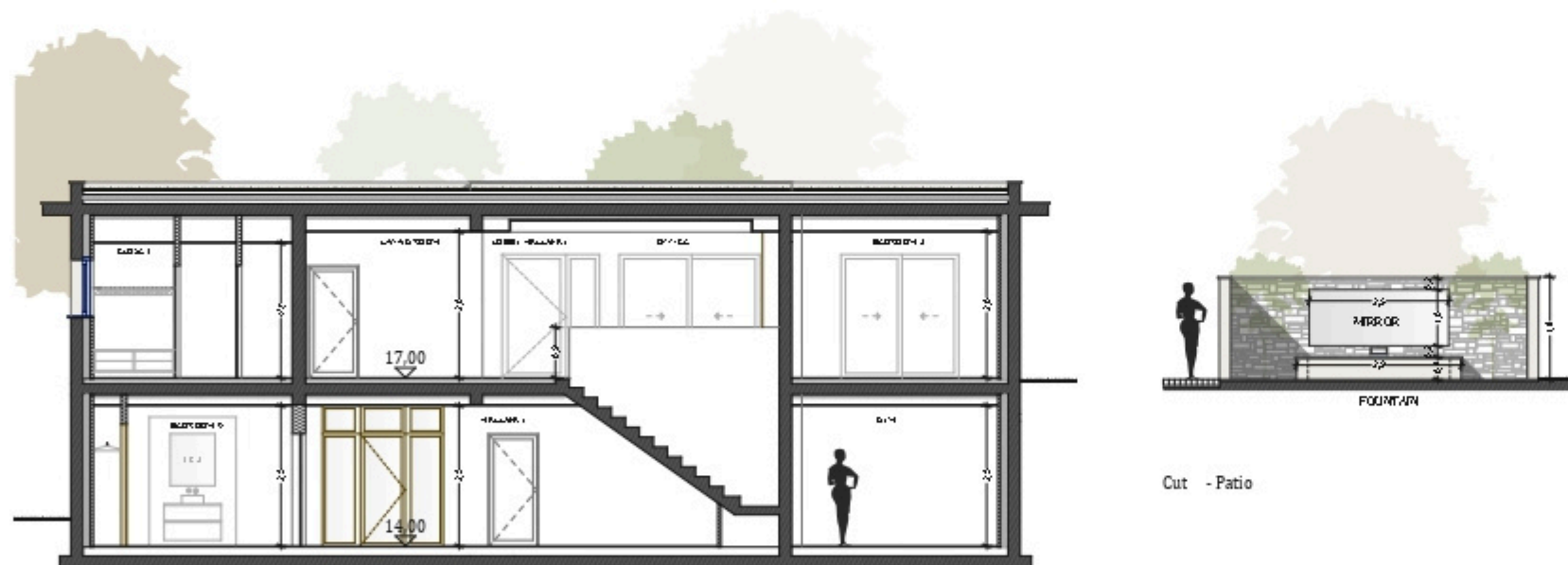
SALES PLAN

VILLA N°19 DOUBLE STOREY

SECTIONAL PLAN



Cut AA



Cut BB

Cut - Patio

Kitchen equipment is not contractual. Their position is indicative. Dimensions and areas are given subject to technical construction and execution requirements. The fallout from false ceilings, soffits and pipes are not systematically shown. The thickness of the insulation will be determined by the technical execution study and therefore the data in this plan are only indicative.

TOTAL INTERIOR LIVING AREA 328.8 m²

GROUND FLOOR 167 m²

Living	40.9 m ²
Dining room	17.7 m ²
Kitchen	14.4 m ²
Office	6.2 m ²
Storeroom	5.1 m ²
Ensuite Bedroom 1	21.2 m ²
Ensuite Bedroom 2	20 m ²
Dressing Ensuite Bedroom 2	3 m ²
Ensuite Bedroom 3	26.7 m ²
Dressing Ensuite Bedroom 3	4.4 m ²
Guest toilet	1.9 m ²
Lobby, Hallway	5.5 m ²

BASEMENT 161.8 m²

Hallway	17.2 m ²
Ensuite Bedroom 4	17.7 m ²
Laundry	6.9 m ²
Gym, Hammam	21.6 m ²
Wine Cellar	10.2 m ²
Garage	88.2 m ²
Technical room swim Pool	20.9 m ²

TOTAL EXTERIOR AREA 101.1 m²

Patio/Fountain	35.7 m ²
Covered terrace	24.6 m ²
Pool Deck	4.8 m ²
Swimming pool	36 m ²

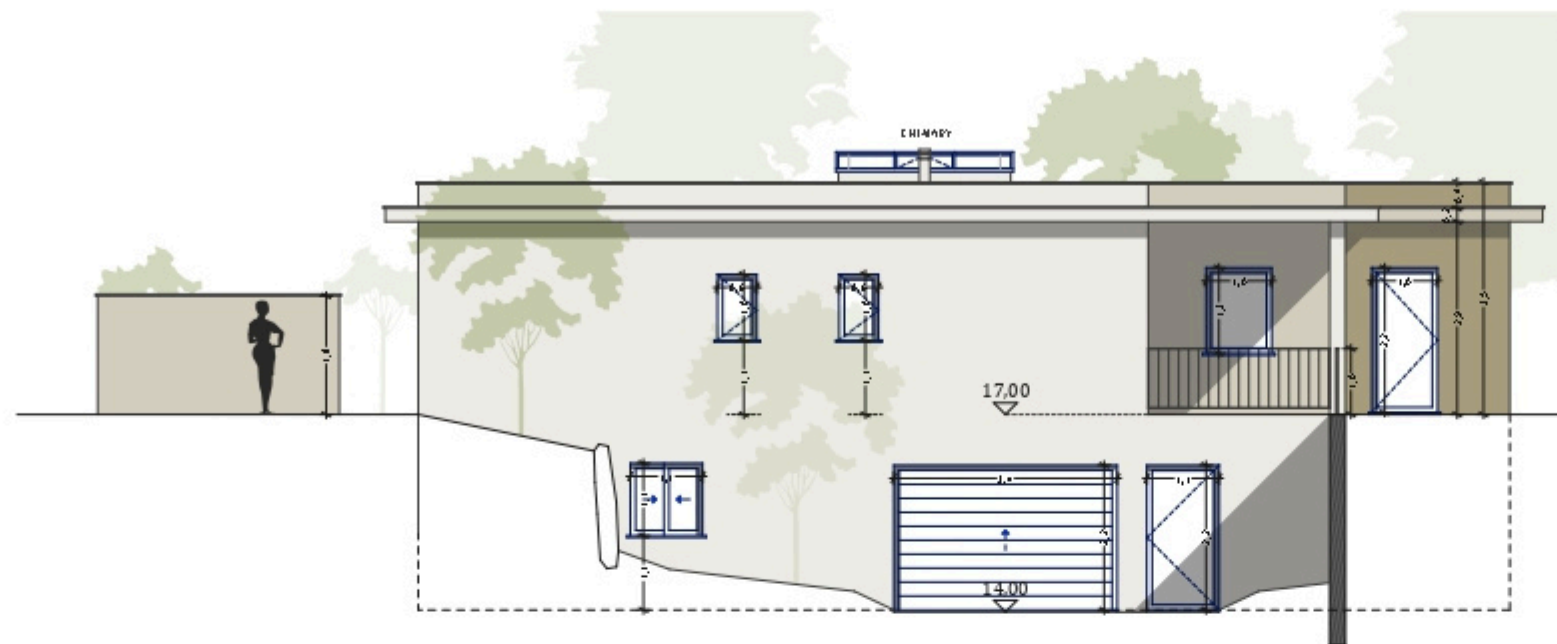
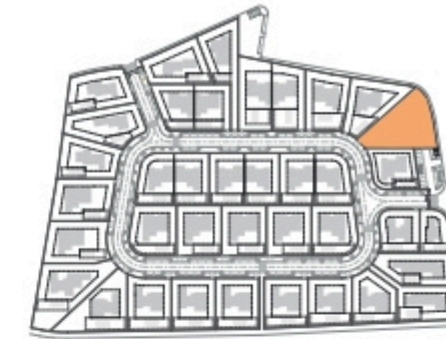
TOTAL AREA 429.9 m²

Plot of Land	1250.8 m ²
Altimetry	17

SALES PLAN

VILLA N°19 DOUBLE STOREY

ELEVATIONS



South elevation



East elevation

Kitchen equipment is not contractual. Their position is indicative. Dimensions and areas are given subject to technical construction and execution requirements. The fallout from false ceilings, soffits and pipes are not systematically shown. The thickness of the insulation will be determined by the technical execution study and therefore the data in this plan are only indicative.

TOTAL INTERIOR LIVING AREA 328.8 m²

GROUND FLOOR 167 m²

Living	40.9 m ²
Dining room	17.7 m ²
Kitchen	14.4 m ²
Office	6.2 m ²
Storeroom	5.1 m ²
Ensuite Bedroom 1	21.2 m ²
Ensuite Bedroom 2	20 m ²
Dressing Ensuite Bedroom 2	3 m ²
Ensuite Bedroom 3	26.7 m ²
Dressing Ensuite Bedroom 3	4.4 m ²
Guest toilet	1.9 m ²
Lobby, Hallway	5.5 m ²

BASEMENT 161.8 m²

Hallway	17.2 m ²
Ensuite Bedroom 4	17.7 m ²
Laundry	6.9 m ²
Gym, Hammam	21.6 m ²
Wine Cellar	10.2 m ²
Garage	88.2 m ²
Technical room swim Pool	20.9 m ²

TOTAL EXTERIOR AREA 101.1 m²

Patio/Fountain	35.7 m ²
Covered terrace	24.6 m ²
Pool Deck	4.8 m ²
Swimming pool	36 m ²

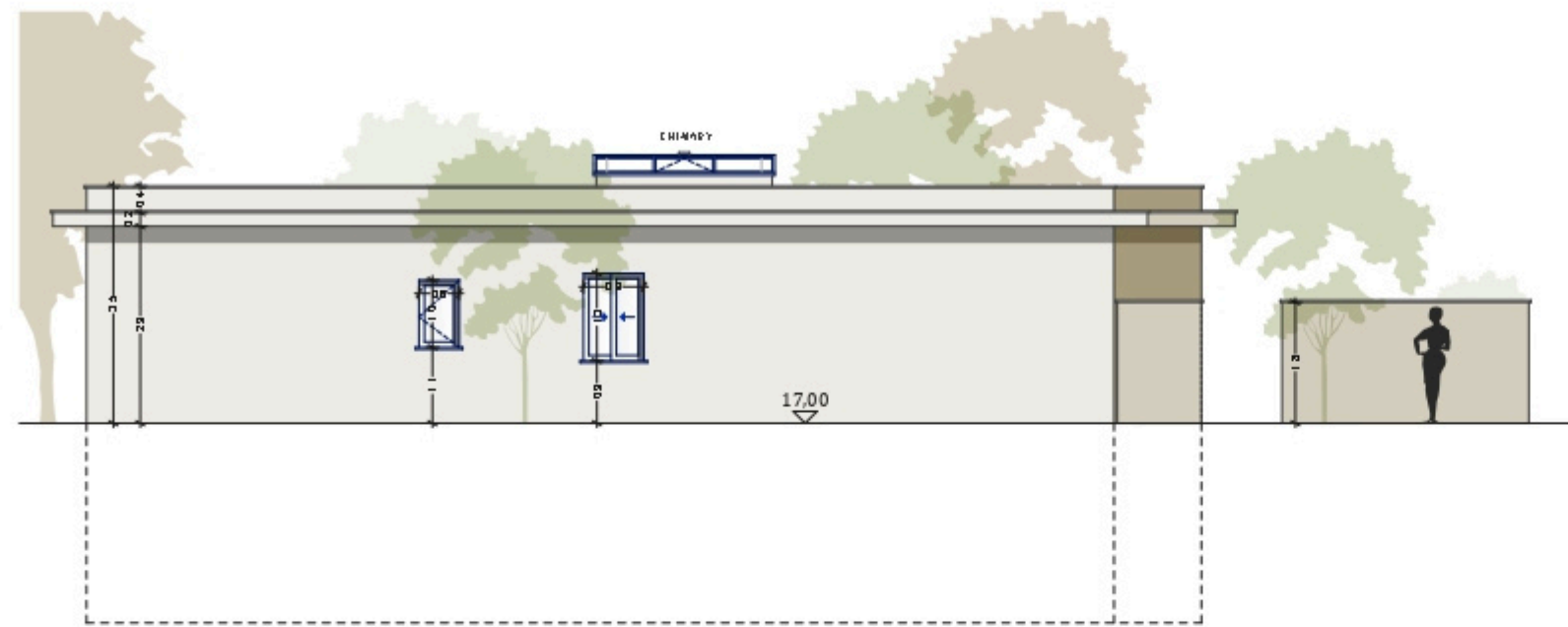
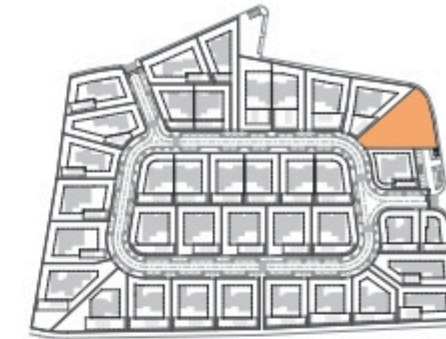
TOTAL AREA 429.9 m²

Plot of Land	1250.8 m ²
Altimetry	17

SALES PLAN

VILLA N°19 DOUBLE STOREY

ELEVATIONS



North elevation



West elevation

Kitchen equipment is not contractual. Their position is indicative. Dimensions and areas are given subject to technical construction and execution requirements. The fallout from false ceilings, soffits and pipes are not systematically shown. The thickness of the insulation will be determined by the technical execution study and therefore the data in this plan are only indicative.

TOTAL INTERIOR LIVING AREA 328.8 m²

GROUND FLOOR 167 m²

Living	40.9 m ²
Dining room	17.7 m ²
Kitchen	14.4 m ²
Office	6.2 m ²
Storeroom	5.1 m ²
Ensuite Bedroom 1	21.2 m ²
Ensuite Bedroom 2	20 m ²
Dressing Ensuite Bedroom 2	3 m ²
Ensuite Bedroom 3	26.7 m ²
Dressing Ensuite Bedroom 3	4.4 m ²
Guest toilet	1.9 m ²
Lobby, Hallway	5.5 m ²

BASEMENT 161.8 m²

Hallway	17.2 m ²
Ensuite Bedroom 4	17.7 m ²
Laundry	6.9 m ²
Gym, Hammam	21.6 m ²
Wine Cellar	10.2 m ²
Garage	88.2 m ²
Technical room swim Pool	20.9 m ²

TOTAL EXTERIOR AREA 101.1 m²

Patio/Fountain	35.7 m ²
Covered terrace	24.6 m ²
Pool Deck	4.8 m ²
Swimming pool	36 m ²

TOTAL AREA 429.9 m²

Plot of Land	1250.8 m ²
Altimetry	17