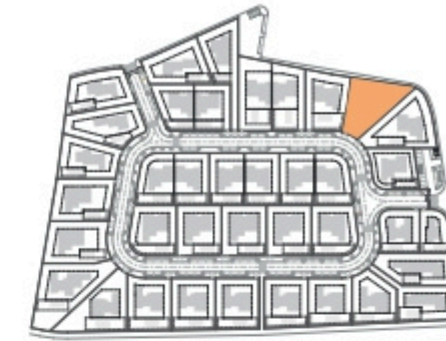


SALES PLAN

VILLA N°20 DOUBLE STOREY

SITE PLAN



Kitchen equipment is not contractual. Their position is indicative. Dimensions and areas are given subject to technical construction and execution requirements.
The fallout from false ceilings, soffits and pipes are not systematically shown.
The thickness of the insulation will be determined by the technical execution study and therefore the data in this plan are only indicative.

TOTAL INTERIOR LIVING AREA 338.2 m²

GROUND FLOOR 167 m²

Living	40.9 m ²
Dining room	17.7 m ²
Kitchen	14.4 m ²
Office	6.2 m ²
Storeroom	5.1 m ²
Ensuite Bedroom 1	21.2 m ²
Ensuite Bedroom 2	20 m ²
Dressing Ensuite Bedroom 2	3 m ²
Ensuite Bedroom 3	26.7 m ²
Dressing Ensuite Bedroom 3	4.4 m ²
Guest toilet	1.9 m ²
Lobby, Hallway	5.5 m ²

BASEMENT 171.2 m²

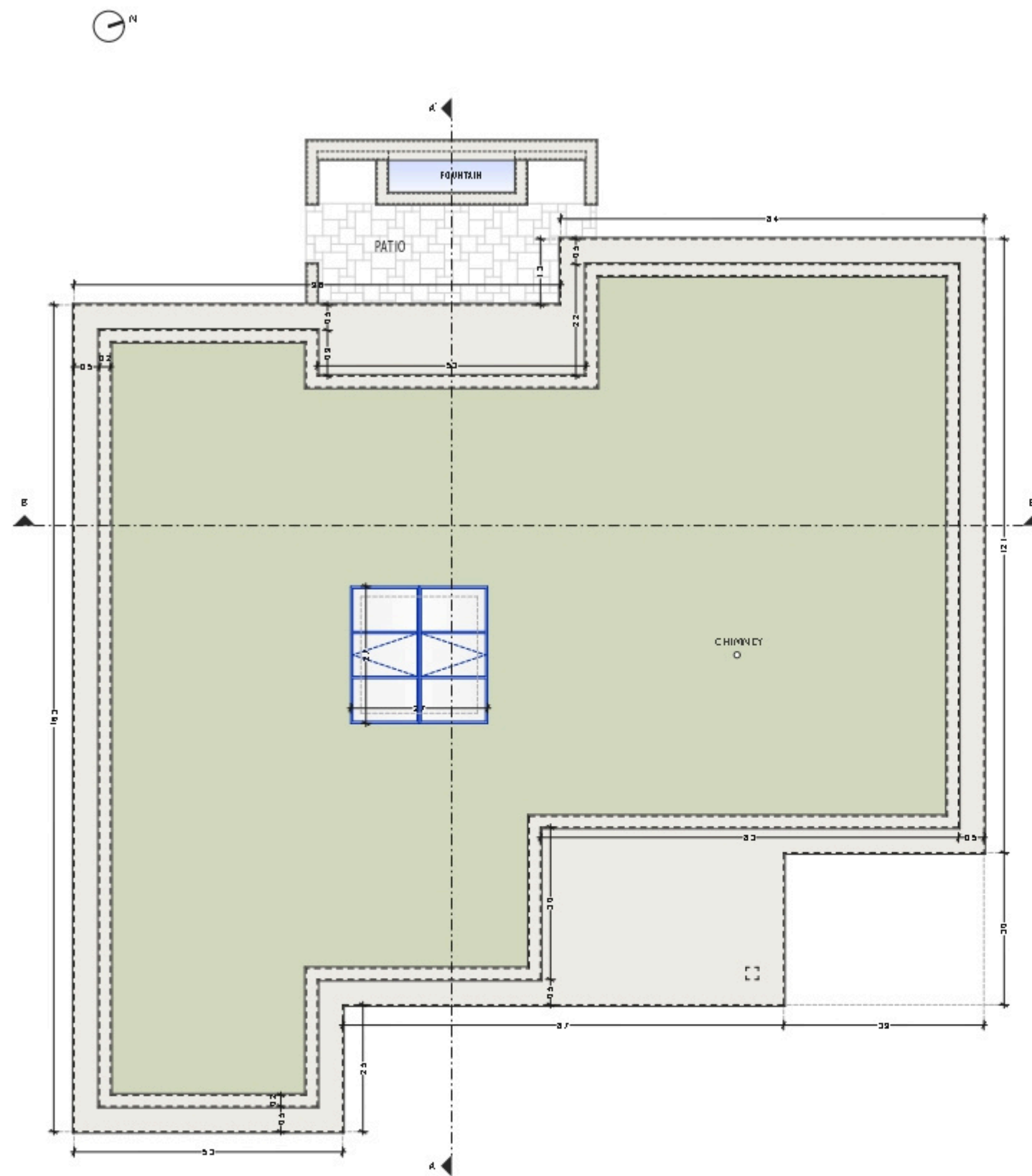
Hallway	17.1 m ²
Ensuite Bedroom 4	20.6 m ²
Laundry	9.5 m ²
Gym, Hammam	37 m ²
Wine Cellar	12.9 m ²
Garage	74.1 m ²
Technical room swim Pool	10.5 m ²

TOTAL EXTERIOR AREA 76.3 m²

Patio/Fountain	22.7 m ²
Covered terrace	12.8 m ²
Pool Deck	4.8 m ²
Swimming pool	36 m ²

TOTAL AREA 414.5 m²

Plot of Land	1047.8 m ²
Altimetry	17.9



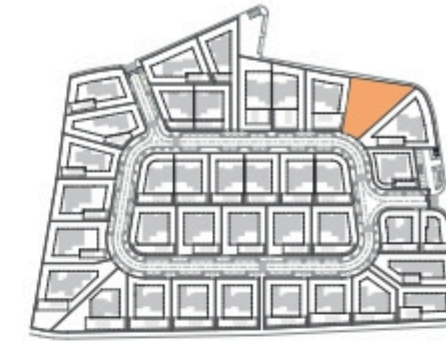
Roof plan

Kitchen equipment is not contractual. Their position is indicative. Dimensions and areas are given subject to technical construction and execution requirements.
 The fallout from false ceilings, soffits and pipes are not systematically shown.
 The thickness of the insulation will be determined by the technical execution study and therefore the data in this plan are only indicative.

SALES PLAN

VILLA N°20 DOUBLE STOREY

FLOOR COVERING PLAN



TOTAL INTERIOR LIVING AREA 338.2 m²

GROUND FLOOR 167 m²

Living	40.9 m ²
Dining room	17.7 m ²
Kitchen	14.4 m ²
Office	6.2 m ²
Storeroom	5.1 m ²
Ensuite Bedroom 1	21.2 m ²
Ensuite Bedroom 2	20 m ²
Dressing Ensuite Bedroom 2	3 m ²
Ensuite Bedroom 3	26.7 m ²
Dressing Ensuite Bedroom 3	4.4 m ²
Guest toilet	1.9 m ²
Lobby, Hallway	5.5 m ²

BASEMENT 171.2 m²

Hallway	17.1 m ²
Ensuite Bedroom 4	20.6 m ²
Laundry	9.5 m ²
Gym, Hammam	37 m ²
Wine Cellar	12.9 m ²
Garage	74.1 m ²
Technical room swim Pool	10.5 m ²

TOTAL EXTERIOR AREA 76.3 m²

Patio/Fountain	22.7 m ²
Covered terrace	12.8 m ²
Pool Deck	4.8 m ²
Swimming pool	36 m ²

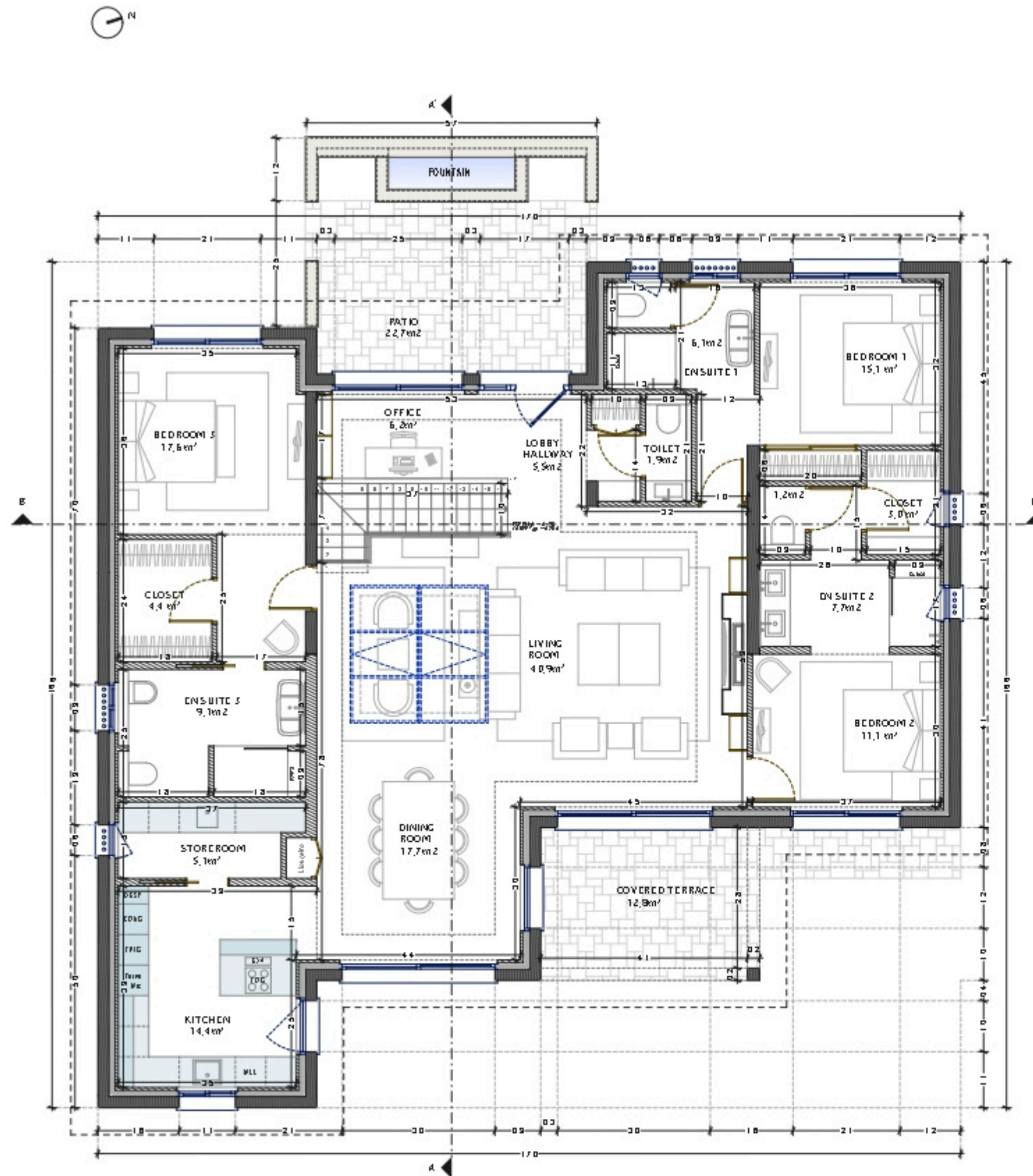
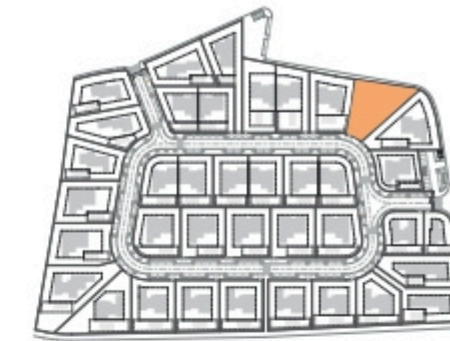
TOTAL AREA 414.5 m²

Plot of Land	1047.8 m ²
Altimetry	17.9

SALES PLAN

VILLA N°20 DOUBLE STOREY

GROUND FLOOR



GROUND FLOOR

Kitchen equipment is not contractual. Their position is indicative. Dimensions and areas are given subject to technical construction and execution requirements. The fallout from false ceilings, soffits and pipes are not systematically shown. The thickness of the insulation will be determined by the technical execution study and therefore the data in this plan are only indicative.

TOTAL INTERIOR LIVING AREA 338.2 m²

GROUND FLOOR 167 m²

Living	40.9 m ²
Dining room	17.7 m ²
Kitchen	14.4 m ²
Office	6.2 m ²
Storeroom	5.1 m ²
Ensuite Bedroom 1	21.2 m ²
Ensuite Bedroom 2	20 m ²
Dressing Ensuite Bedroom 2	3 m ²
Ensuite Bedroom 3	26.7 m ²
Dressing Ensuite Bedroom 3	4.4 m ²
Guest toilet	1.9 m ²
Lobby, Hallway	5.5 m ²

BASEMENT 171.2 m²

Hallway	17.1 m ²
Ensuite Bedroom 4	20.6 m ²
Laundry	9.5 m ²
Gym, Hammam	37 m ²
Wine Cellar	12.9 m ²
Garage	74.1 m ²
Technical room swim Pool	10.5 m ²

TOTAL EXTERIOR AREA 76.3 m²

Patio/Fountain	22.7 m ²
Covered terrace	12.8 m ²
Pool Deck	4.8 m ²
Swimming pool	36 m ²

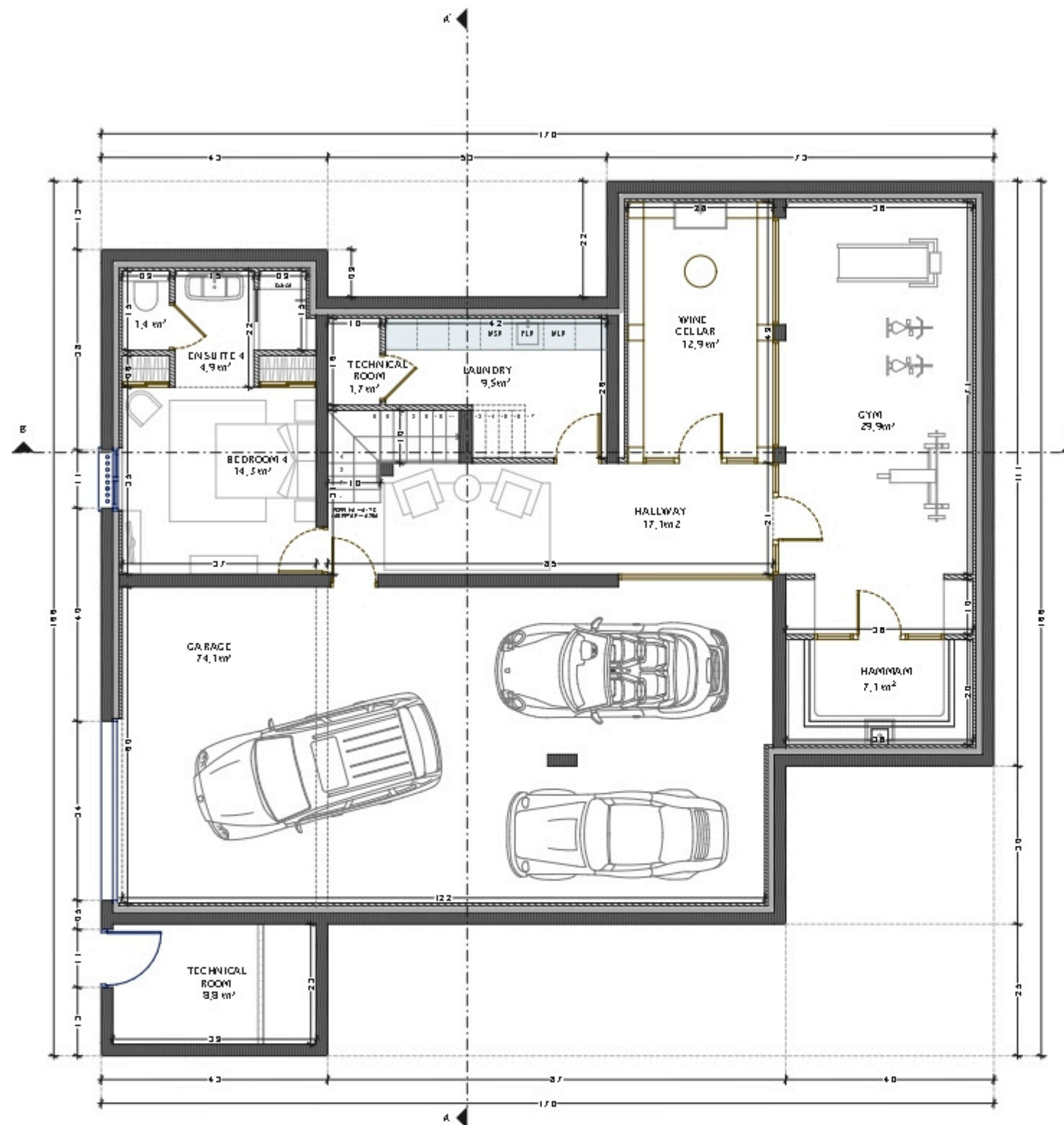
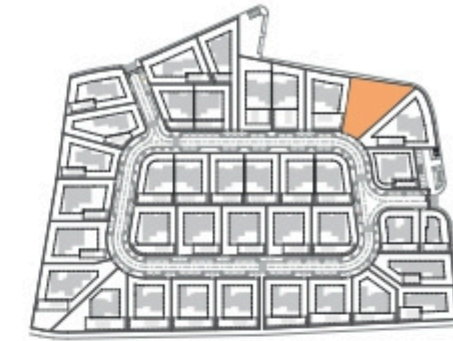
TOTAL AREA 414.5 m²

Plot of Land	1047.8 m ²
Altimetry	17.9

SALES PLAN

VILLA N°20 DOUBLE STOREY

BASEMENT



BASEMENT

Kitchen equipment is not contractual. Their position is indicative. Dimensions and areas are given subject to technical construction and execution requirements. The fallout from false ceilings, soffits and pipes are not systematically shown. The thickness of the insulation will be determined by the technical execution study and therefore the data in this plan are only indicative.

TOTAL INTERIOR LIVING AREA 338.2 m²

GROUND FLOOR 167 m²

Living	40.9 m ²
Dining room	17.7 m ²
Kitchen	14.4 m ²
Office	6.2 m ²
Storeroom	5.1 m ²
Ensuite Bedroom 1	21.2 m ²
Ensuite Bedroom 2	20 m ²
Dressing Ensuite Bedroom 2	3 m ²
Ensuite Bedroom 3	26.7 m ²
Dressing Ensuite Bedroom 3	4.4 m ²
Guest toilet	1.9 m ²
Lobby, Hallway	5.5 m ²

BASEMENT 171.2 m²

Hallway	17.1 m ²
Ensuite Bedroom 4	20.6 m ²
Laundry	9.5 m ²
Gym, Hammam	37 m ²
Wine Cellar	12.9 m ²
Garage	74.1 m ²
Technical room swim Pool	10.5 m ²

TOTAL EXTERIOR AREA 76.3 m²

Patio/Fountain	22.7 m ²
Covered terrace	12.8 m ²
Pool Deck	4.8 m ²
Swimming pool	36 m ²

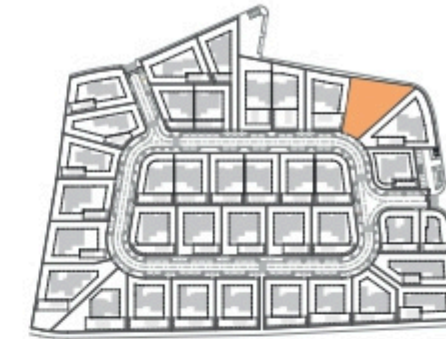
TOTAL AREA 414.5 m²

Plot of Land	1047.8 m ²
Altimetry	17.9

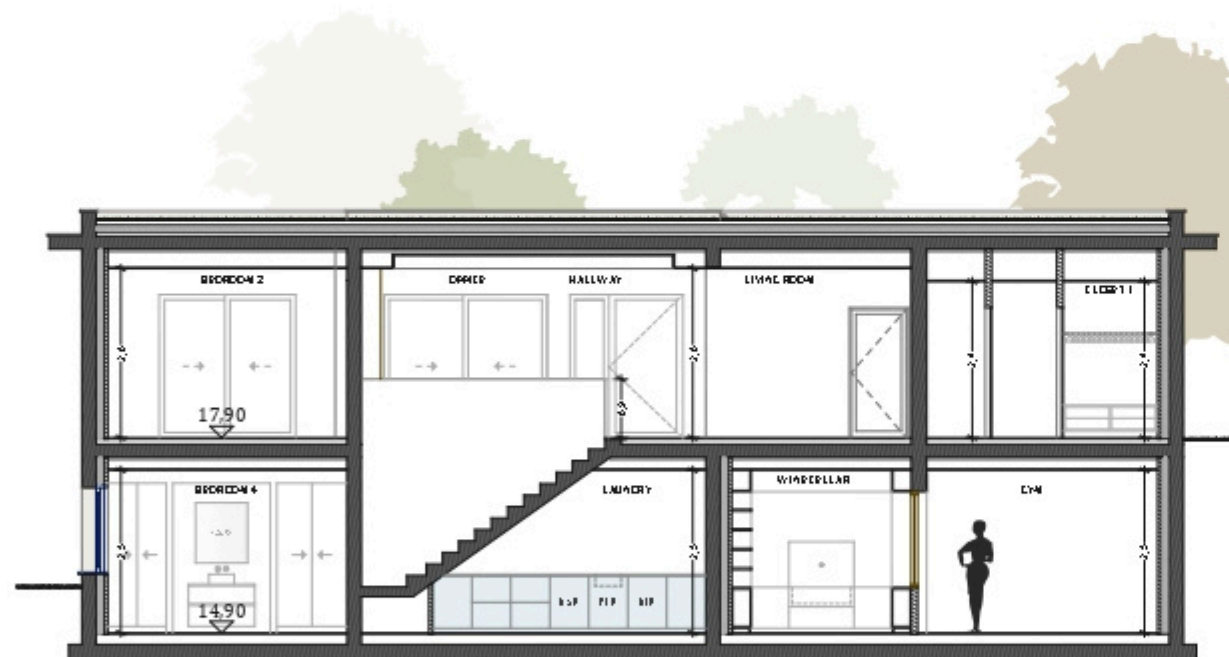
SALES PLAN

VILLA N°20 DOUBLE STOREY

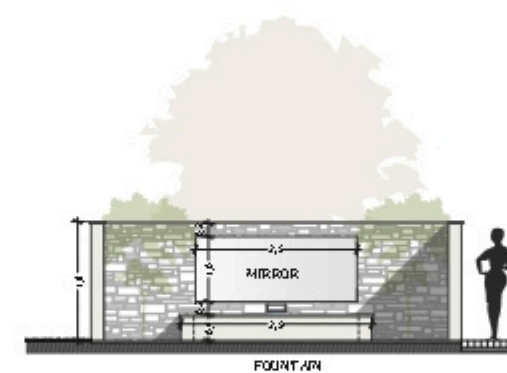
SECTIONAL PLAN



Cut AA'



Cut BB'



Cut - Patio

Kitchen equipment is not contractual. Their position is indicative. Dimensions and areas are given subject to technical construction and execution requirements. The fallout from false ceilings, soffits and pipes are not systematically shown. The thickness of the insulation will be determined by the technical execution study and therefore the data in this plan are only indicative.

TOTAL INTERIOR LIVING AREA 338.2 m²

GROUND FLOOR 167 m²

Living	40.9 m ²
Dining room	17.7 m ²
Kitchen	14.4 m ²
Office	6.2 m ²
Storeroom	5.1 m ²
Ensuite Bedroom 1	21.2 m ²
Ensuite Bedroom 2	20 m ²
Dressing Ensuite Bedroom 2	3 m ²
Ensuite Bedroom 3	26.7 m ²
Dressing Ensuite Bedroom 3	4.4 m ²
Guest toilet	1.9 m ²
Lobby, Hallway	5.5 m ²

BASEMENT 171.2 m²

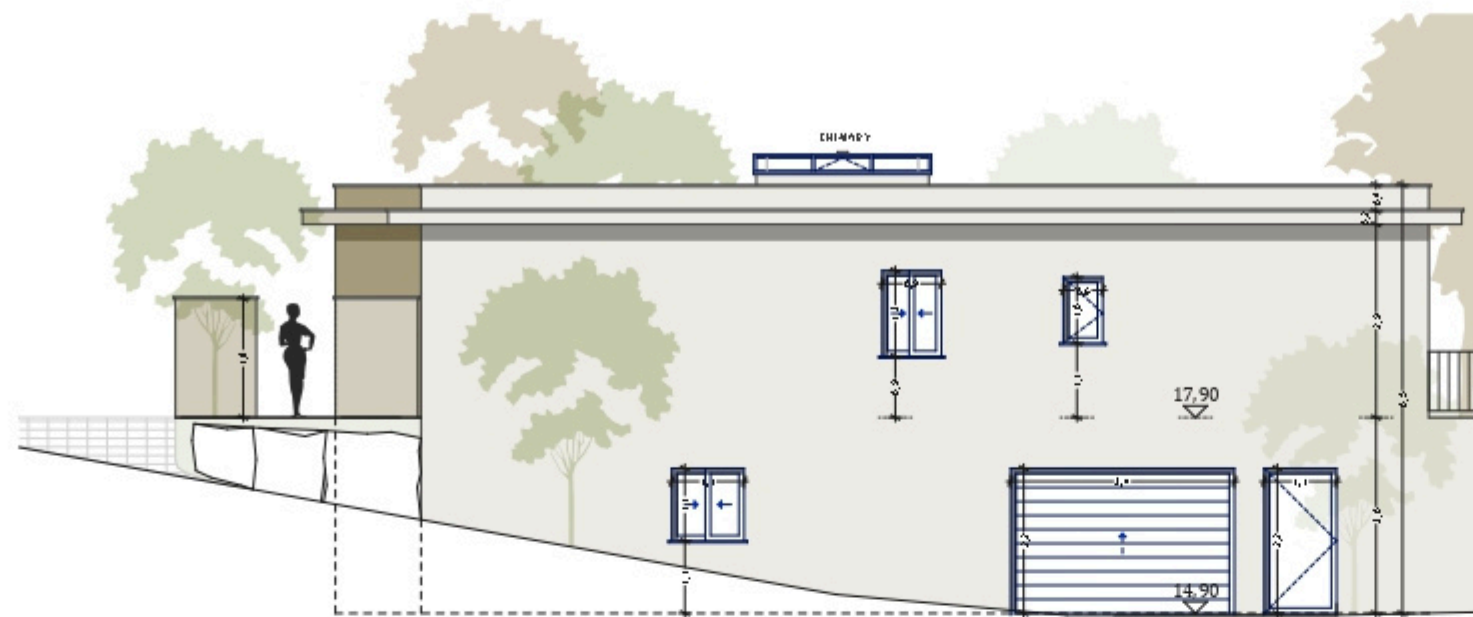
Hallway	17.1 m ²
Ensuite Bedroom 4	20.6 m ²
Laundry	9.5 m ²
Gym, Hammam	37 m ²
Wine Cellar	12.9 m ²
Garage	74.1 m ²
Technical room swim Pool	10.5 m ²

TOTAL EXTERIOR AREA 76.3 m²

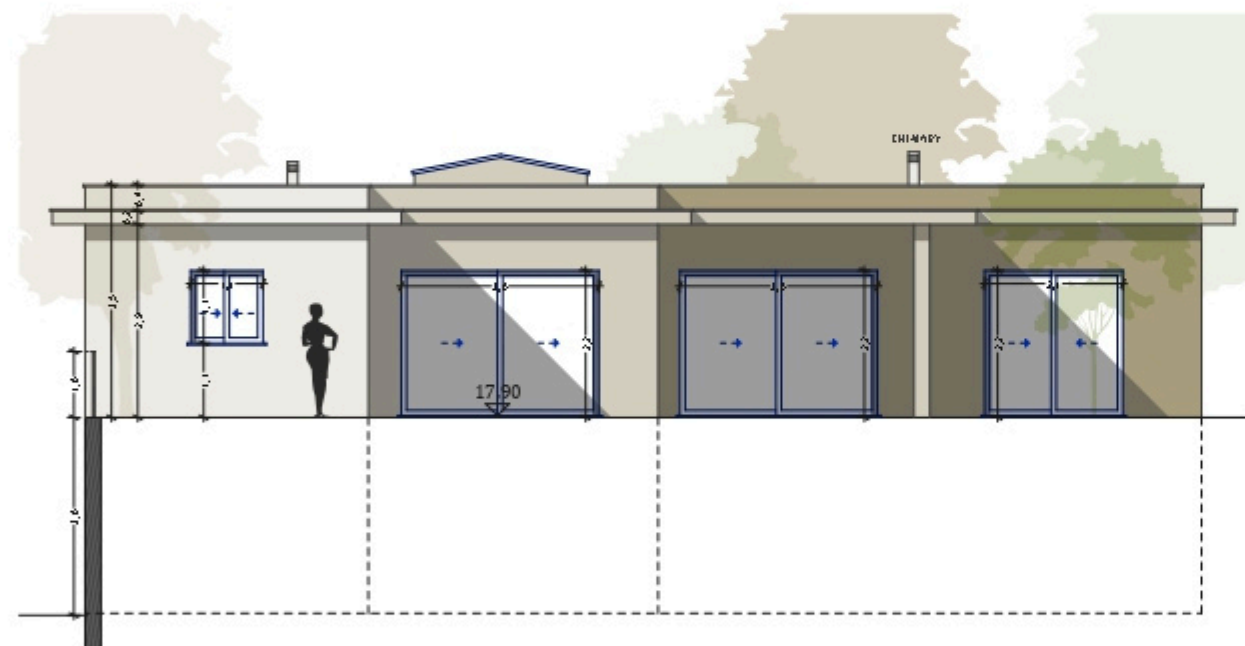
Patio/Fountain	22.7 m ²
Covered terrace	12.8 m ²
Pool Deck	4.8 m ²
Swimming pool	36 m ²

TOTAL AREA 414.5 m²

Plot of Land	1047.8 m ²
Altimetry	17.9



South elevation



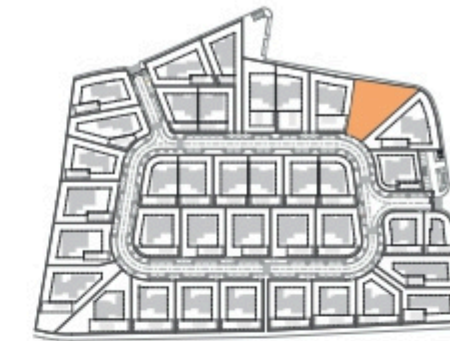
East elevation

Kitchen equipment is not contractual. Their position is indicative. Dimensions and areas are given subject to technical construction and execution requirements. The fallout from false ceilings, soffits and pipes are not systematically shown. The thickness of the insulation will be determined by the technical execution study and therefore the data in this plan are only indicative.

SALES PLAN

VILLA N°20 DOUBLE STOREY

ELEVATIONS



TOTAL INTERIOR LIVING AREA 338.2 m²

GROUND FLOOR 167 m²

Living	40.9 m ²
Dining room	17.7 m ²
Kitchen	14.4 m ²
Office	6.2 m ²
Storeroom	5.1 m ²
Ensuite Bedroom 1	21.2 m ²
Ensuite Bedroom 2	20 m ²
Dressing Ensuite Bedroom 2	3 m ²
Ensuite Bedroom 3	26.7 m ²
Dressing Ensuite Bedroom 3	4.4 m ²
Guest toilet	1.9 m ²
Lobby, Hallway	5.5 m ²

BASEMENT 171.2 m²

Hallway	17.1 m ²
Ensuite Bedroom 4	20.6 m ²
Laundry	9.5 m ²
Gym, Hammam	37 m ²
Wine Cellar	12.9 m ²
Garage	74.1 m ²
Technical room swim Pool	10.5 m ²

TOTAL EXTERIOR AREA 76.3 m²

Patio/Fountain	22.7 m ²
Covered terrace	12.8 m ²
Pool Deck	4.8 m ²
Swimming pool	36 m ²

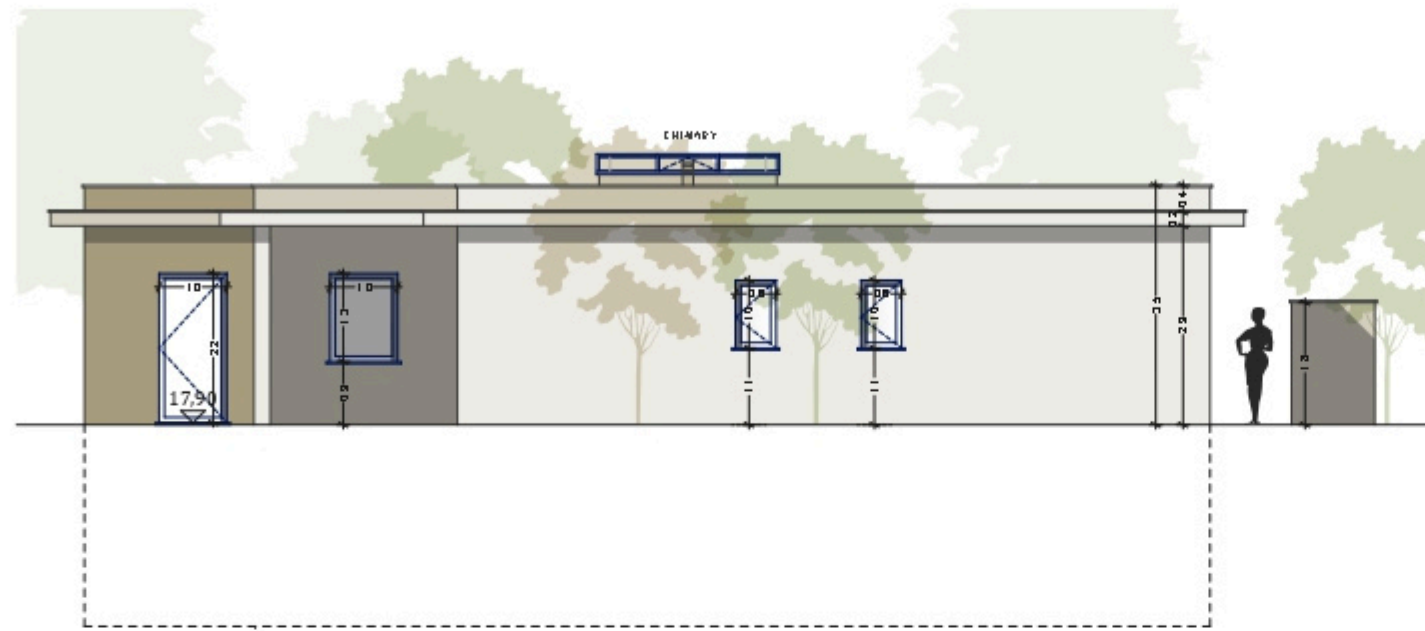
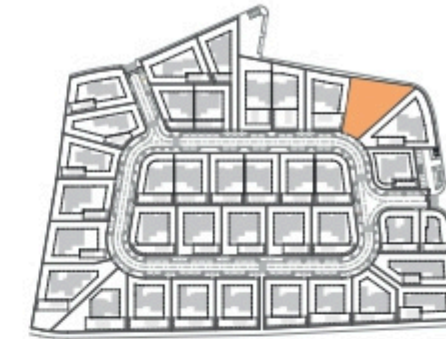
TOTAL AREA 414.5 m²

Plot of Land	1047.8 m ²
Altimetry	17.9

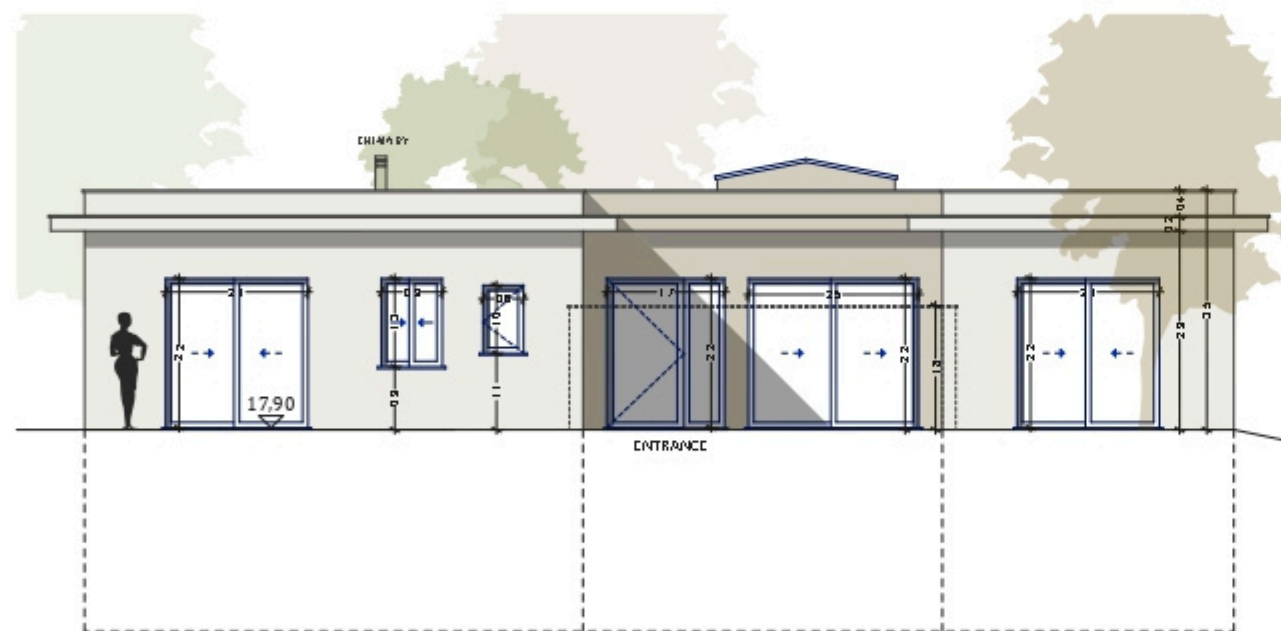
SALES PLAN

VILLA N°20 DOUBLE STOREY

ELEVATIONS



North elevation



West elevation

Kitchen equipment is not contractual. Their position is indicative. Dimensions and areas are given subject to technical construction and execution requirements.
The fallout from false ceilings, soffits and pipes are not systematically shown.
The thickness of the insulation will be determined by the technical execution study and therefore the data in this plan are only indicative.

TOTAL INTERIOR LIVING AREA 338.2 m²

GROUND FLOOR 167 m²

Living	40.9 m ²
Dining room	17.7 m ²
Kitchen	14.4 m ²
Office	6.2 m ²
Storeroom	5.1 m ²
Ensuite Bedroom 1	21.2 m ²
Ensuite Bedroom 2	20 m ²
Dressing Ensuite Bedroom 2	3 m ²
Ensuite Bedroom 3	26.7 m ²
Dressing Ensuite Bedroom 3	4.4 m ²
Guest toilet	1.9 m ²
Lobby, Hallway	5.5 m ²

BASEMENT 171.2 m²

Hallway	17.1 m ²
Ensuite Bedroom 4	20.6 m ²
Laundry	9.5 m ²
Gym, Hammam	37 m ²
Wine Cellar	12.9 m ²
Garage	74.1 m ²
Technical room swim Pool	10.5 m ²

TOTAL EXTERIOR AREA 76.3 m²

Patio/Fountain	22.7 m ²
Covered terrace	12.8 m ²
Pool Deck	4.8 m ²
Swimming pool	36 m ²

TOTAL AREA 414.5 m²

Plot of Land	1047.8 m ²
Altimetry	17.9