

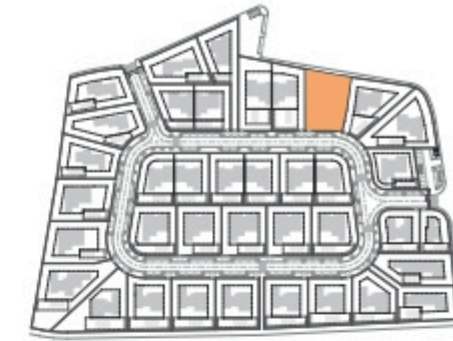


Kitchen equipment is not contractual. Their position is indicative. Dimensions and areas are given subject to technical construction and execution requirements.
The fallout from false ceilings, soffits and pipes are not systematically shown.
The thickness of the insulation will be determined by the technical execution study and therefore the data in this plan are only indicative.

SALES PLAN

VILLA N°21 DOUBLE STOREY

SITE PLAN



TOTAL INTERIOR LIVING AREA 328.8 m²

GROUND FLOOR 167 m²

Living	40.9 m ²
Dining room	17.7 m ²
Kitchen	14.4 m ²
Office	6.2 m ²
Storeroom	5.1 m ²
Ensuite Bedroom 1	21.2 m ²
Ensuite Bedroom 2	20 m ²
Dressing Ensuite Bedroom 2	3 m ²
Ensuite Bedroom 3	26.7 m ²
Dressing Ensuite Bedroom 3	4.4 m ²
Guest toilet	1.9 m ²
Lobby, Hallway	5.5 m ²

BASEMENT 161.8 m²

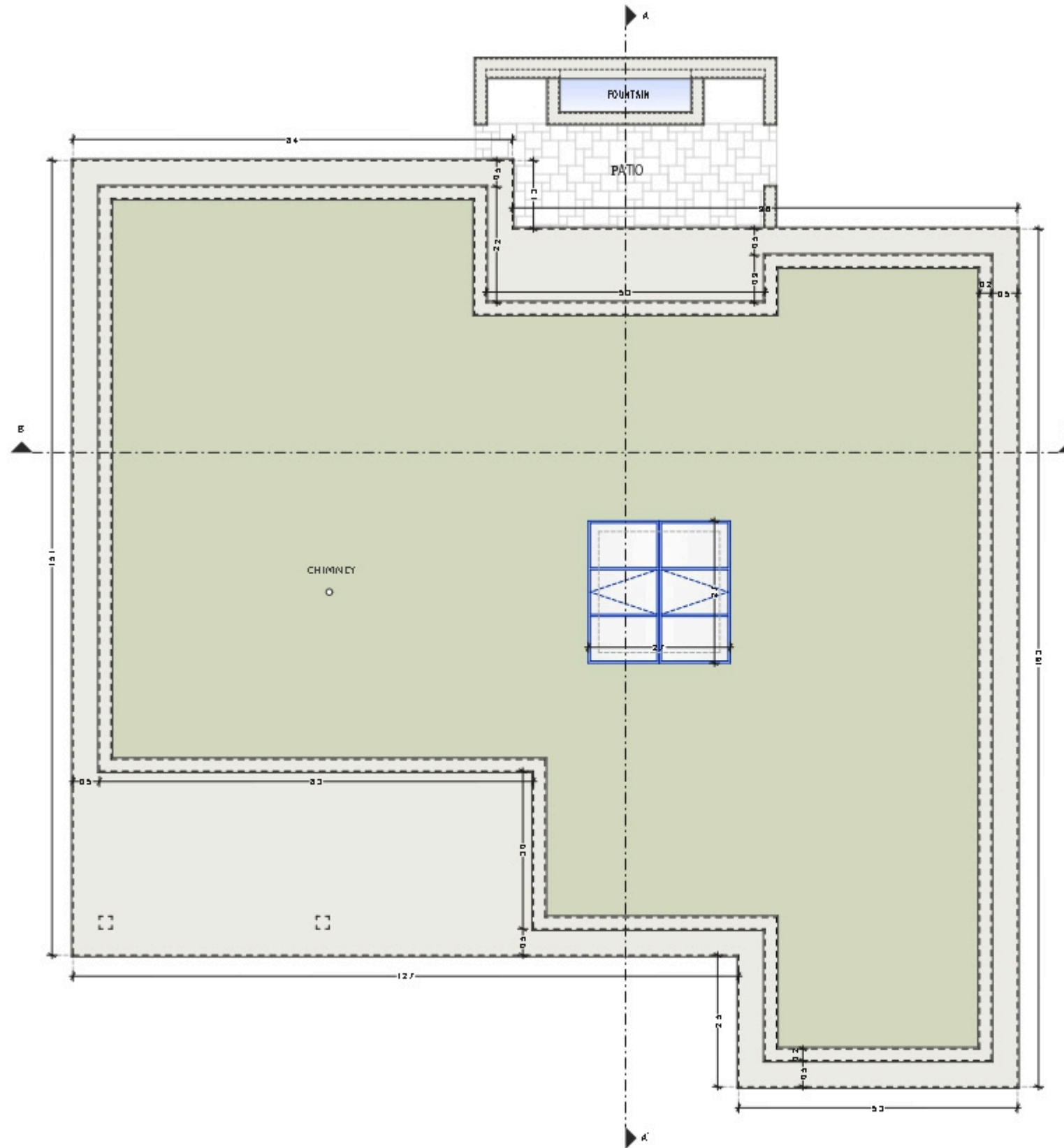
Hallway	17.2 m ²
Ensuite Bedroom 4	17.7 m ²
Laundry	6.9 m ²
Gym, Hammam	21.6 m ²
Wine Cellar	10.2 m ²
Garage	88.2 m ²
Technical room swim Pool	20.9 m ²

TOTAL EXTERIOR AREA 88.1 m²

Patio/Fountain	22.7 m ²
Covered terrace	24.6 m ²
Pool Deck	4.8 m ²
Swimming pool	36 m ²

TOTAL AREA 416.9 m²

Plot of Land	1045.7 m ²
Altimetry	18.6

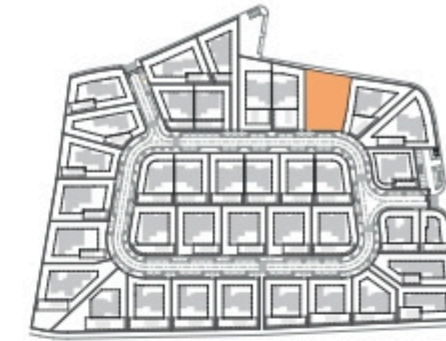


Kitchen equipment is not contractual. Their position is indicative. Dimensions and areas are given subject to technical construction and execution requirements.
The fallout from false ceilings, soffits and pipes are not systematically shown.
The thickness of the insulation will be determined by the technical execution study and therefore the data in this plan are only indicative.

SALES PLAN

VILLA N°21 DOUBLE STOREY

FLOOR COVERING PLAN



TOTAL INTERIOR LIVING AREA 328.8 m²

GROUND FLOOR 167 m²

Living	40.9 m ²
Dining room	17.7 m ²
Kitchen	14.4 m ²
Office	6.2 m ²
Storeroom	5.1 m ²
Ensuite Bedroom 1	21.2 m ²
Ensuite Bedroom 2	20 m ²
Dressing Ensuite Bedroom 2	3 m ²
Ensuite Bedroom 3	26.7 m ²
Dressing Ensuite Bedroom 3	4.4 m ²
Guest toilet	1.9 m ²
Lobby, Hallway	5.5 m ²

BASEMENT 161.8 m²

Hallway	17.2 m ²
Ensuite Bedroom 4	17.7 m ²
Laundry	6.9 m ²
Gym, Hammam	21.6 m ²
Wine Cellar	10.2 m ²
Garage	88.2 m ²
Technical room swim Pool	20.9 m ²

TOTAL EXTERIOR AREA 88.1 m²

Patio/Fountain	22.7 m ²
Covered terrace	24.6 m ²
Pool Deck	4.8 m ²
Swimming pool	36 m ²

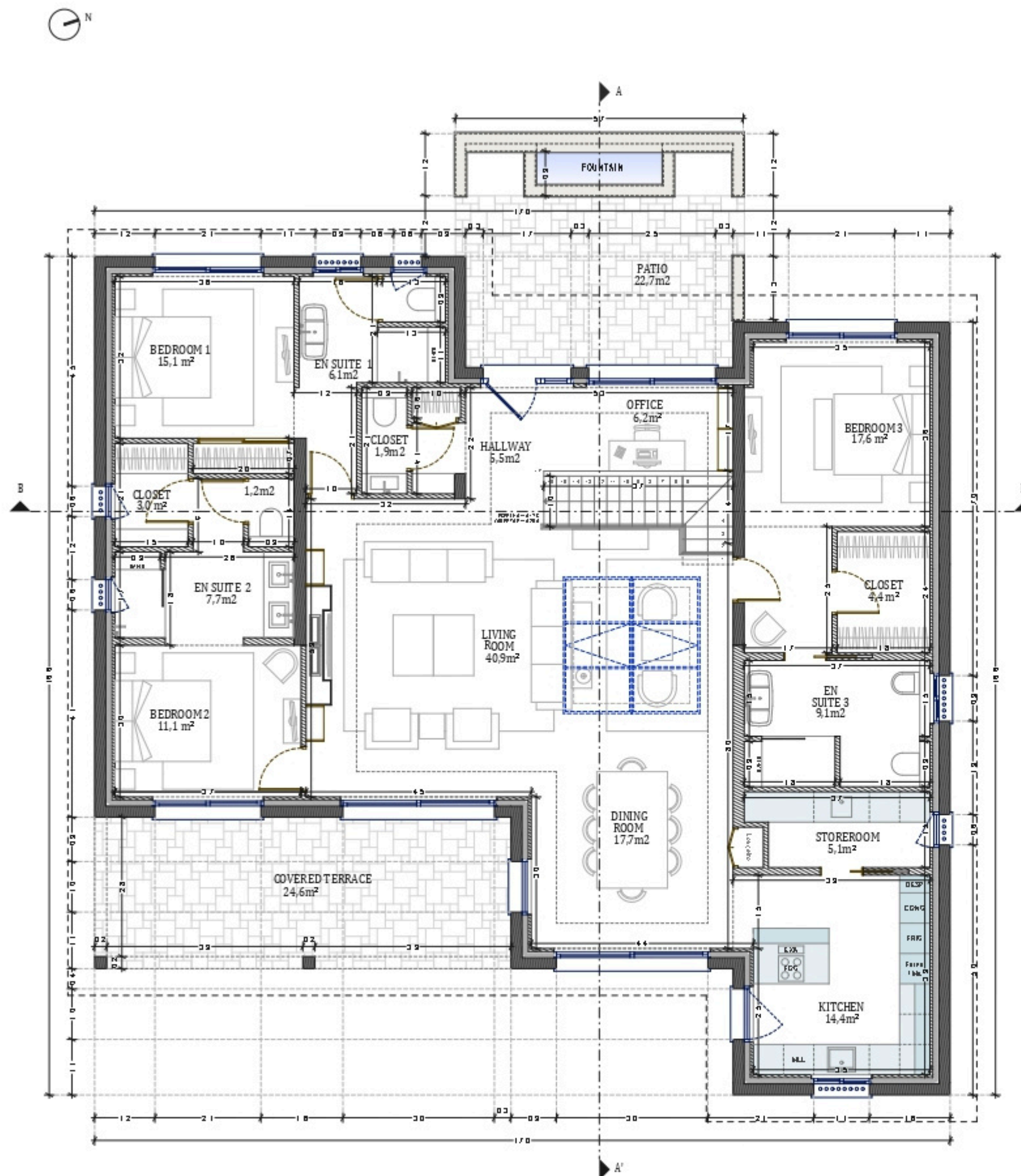
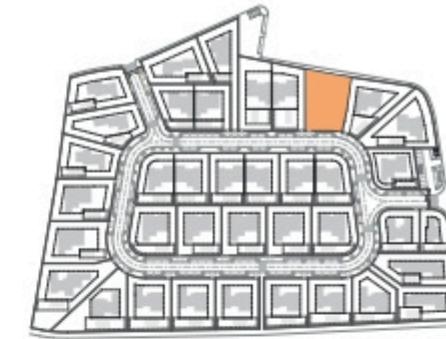
TOTAL AREA 416.9 m²

Plot of Land	1045.7 m ²
Altimetry	18.6

SALES PLAN

VILLA N°21 DOUBLE STOREY

GROUND FLOOR



Kitchen equipment is not contractual. Their position is indicative. Dimensions and areas are given subject to technical construction and execution requirements. The fallout from false ceilings, soffits and pipes are not systematically shown. The thickness of the insulation will be determined by the technical execution study and therefore the data in this plan are only indicative.

TOTAL INTERIOR LIVING AREA 328.8 m²

GROUND FLOOR 167 m²

Living	40.9 m ²
Dining room	17.7 m ²
Kitchen	14.4 m ²
Office	6.2 m ²
Storeroom	5.1 m ²
Ensuite Bedroom 1	21.2 m ²
Ensuite Bedroom 2	20 m ²
Dressing Ensuite Bedroom 2	3 m ²
Ensuite Bedroom 3	26.7 m ²
Dressing Ensuite Bedroom 3	4.4 m ²
Guest toilet	1.9 m ²
Lobby, Hallway	5.5 m ²

BASEMENT 161.8 m²

Hallway	17.2 m ²
Ensuite Bedroom 4	17.7 m ²
Laundry	6.9 m ²
Gym, Hammam	21.6 m ²
Wine Cellar	10.2 m ²
Garage	88.2 m ²
Technical room swim Pool	20.9 m ²

TOTAL EXTERIOR AREA 88.1 m²

Patio/Fountain	22.7 m ²
Covered terrace	24.6 m ²
Pool Deck	4.8 m ²
Swimming pool	36 m ²

TOTAL AREA 416.9 m²

Plot of Land	1045.7 m ²
Altimetry	18.6

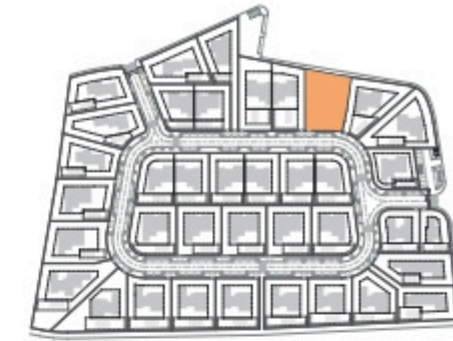


Kitchen equipment is not contractual. Their position is indicative. Dimensions and areas are given subject to technical construction and execution requirements.
The fallout from false ceilings, soffits and pipes are not systematically shown.
The thickness of the insulation will be determined by the technical execution study and therefore the data in this plan are only indicative.

SALES PLAN

VILLA N°21 DOUBLE STOREY

BASEMENT



TOTAL INTERIOR LIVING AREA 328.8 m²

GROUND FLOOR 167 m²

Living	40.9 m ²
Dining room	17.7 m ²
Kitchen	14.4 m ²
Office	6.2 m ²
Storeroom	5.1 m ²
Ensuite Bedroom 1	21.2 m ²
Ensuite Bedroom 2	20 m ²
Dressing Ensuite Bedroom 2	3 m ²
Ensuite Bedroom 3	26.7 m ²
Dressing Ensuite Bedroom 3	4.4 m ²
Guest toilet	1.9 m ²
Lobby, Hallway	5.5 m ²

BASEMENT 161.8 m²

Hallway	17.2 m ²
Ensuite Bedroom 4	17.7 m ²
Laundry	6.9 m ²
Gym, Hammam	21.6 m ²
Wine Cellar	10.2 m ²
Garage	88.2 m ²
Technical room swim Pool	20.9 m ²

TOTAL EXTERIOR AREA 88.1 m²

Patio/Fountain	22.7 m ²
Covered terrace	24.6 m ²
Pool Deck	4.8 m ²
Swimming pool	36 m ²

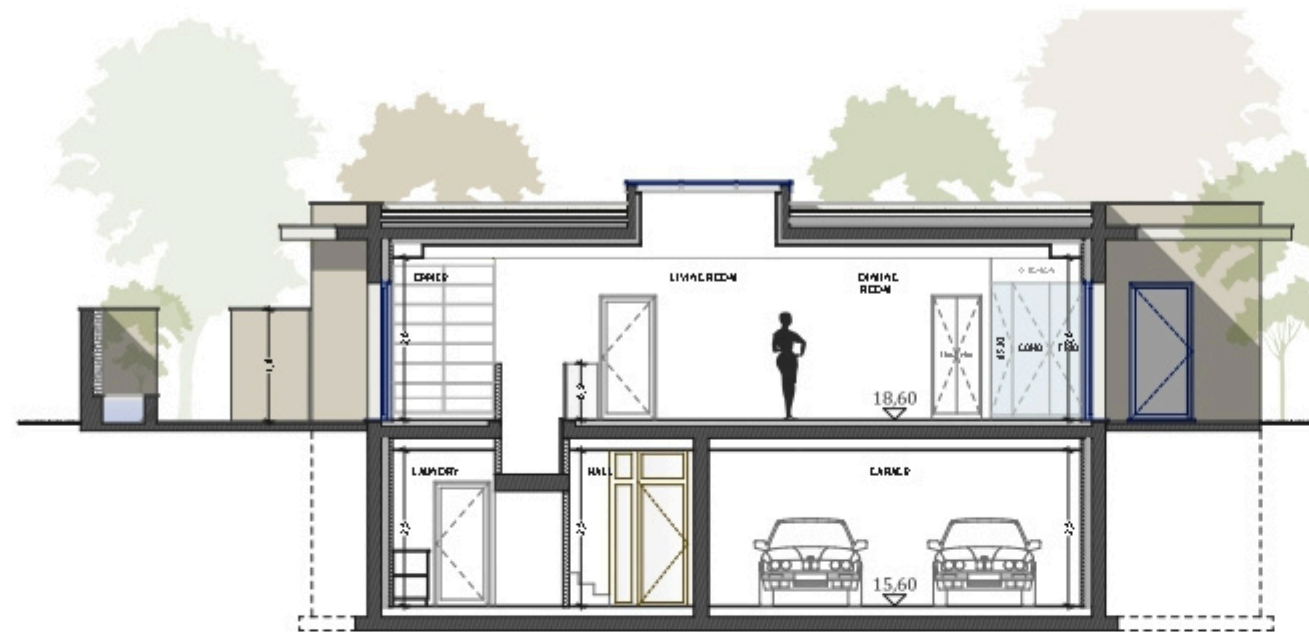
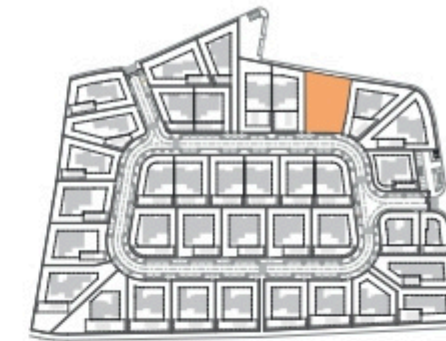
TOTAL AREA 416.9 m²

Plot of Land	1045.7 m ²
Altimetry	18.6

SALES PLAN

VILLA N°21 DOUBLE STOREY

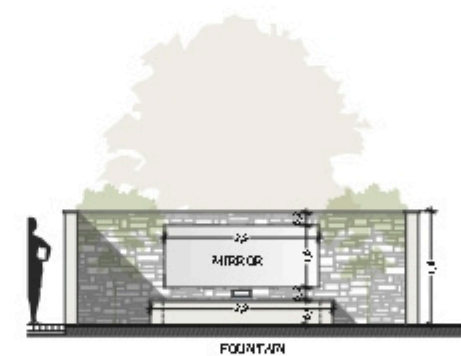
SECTIONAL PLAN



Corte AA'



Corte BB'



Corte - Patio

Kitchen equipment is not contractual. Their position is indicative. Dimensions and areas are given subject to technical construction and execution requirements. The fallout from false ceilings, soffits and pipes are not systematically shown. The thickness of the insulation will be determined by the technical execution study and therefore the data in this plan are only indicative.

TOTAL INTERIOR LIVING AREA 328.8 m²

GROUND FLOOR 167 m²

Living	40.9 m ²
Dining room	17.7 m ²
Kitchen	14.4 m ²
Office	6.2 m ²
Storeroom	5.1 m ²
Ensuite Bedroom 1	21.2 m ²
Ensuite Bedroom 2	20 m ²
Dressing Ensuite Bedroom 2	3 m ²
Ensuite Bedroom 3	26.7 m ²
Dressing Ensuite Bedroom 3	4.4 m ²
Guest toilet	1.9 m ²
Lobby, Hallway	5.5 m ²

BASEMENT 161.8 m²

Hallway	17.2 m ²
Ensuite Bedroom 4	17.7 m ²
Laundry	6.9 m ²
Gym, Hammam	21.6 m ²
Wine Cellar	10.2 m ²
Garage	88.2 m ²
Technical room swim Pool	20.9 m ²

TOTAL EXTERIOR AREA 88.1 m²

Patio/Fountain	22.7 m ²
Covered terrace	24.6 m ²
Pool Deck	4.8 m ²
Swimming pool	36 m ²

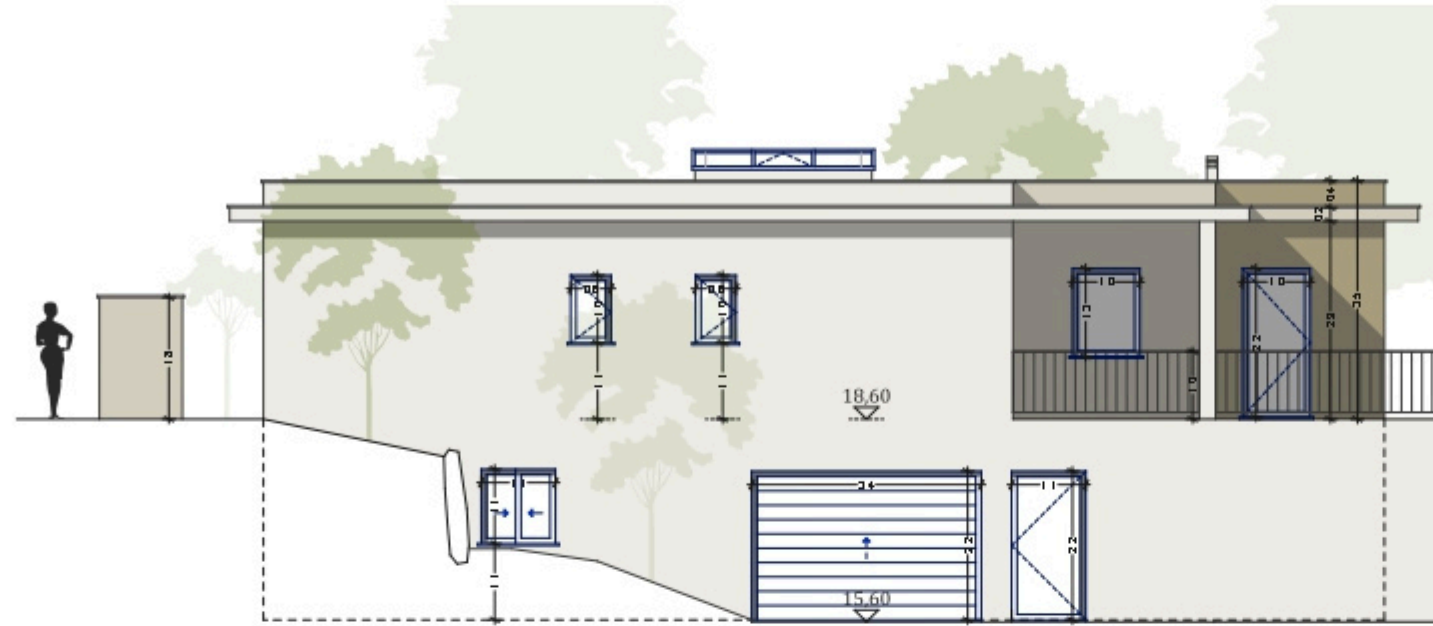
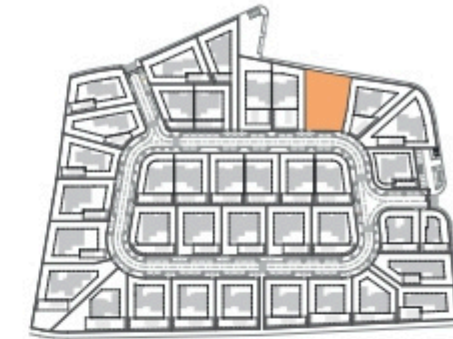
TOTAL AREA 416.9 m²

Plot of Land	1045.7 m ²
Altimetry	18.6

SALES PLAN

VILLA N°21 DOUBLE STOREY

ELEVATIONS



Alcado Sul



Alcado Este

Kitchen equipment is not contractual. Their position is indicative. Dimensions and areas are given subject to technical construction and execution requirements. The fallout from false ceilings, soffits and pipes are not systematically shown. The thickness of the insulation will be determined by the technical execution study and therefore the data in this plan are only indicative.

TOTAL INTERIOR LIVING AREA 328.8 m²

GROUND FLOOR 167 m²

Living	40.9 m ²
Dining room	17.7 m ²
Kitchen	14.4 m ²
Office	6.2 m ²
Storeroom	5.1 m ²
Ensuite Bedroom 1	21.2 m ²
Ensuite Bedroom 2	20 m ²
Dressing Ensuite Bedroom 2	3 m ²
Ensuite Bedroom 3	26.7 m ²
Dressing Ensuite Bedroom 3	4.4 m ²
Guest toilet	1.9 m ²
Lobby, Hallway	5.5 m ²

BASEMENT 161.8 m²

Hallway	17.2 m ²
Ensuite Bedroom 4	17.7 m ²
Laundry	6.9 m ²
Gym, Hammam	21.6 m ²
Wine Cellar	10.2 m ²
Garage	88.2 m ²
Technical room swim Pool	20.9 m ²

TOTAL EXTERIOR AREA 88.1 m²

Patio/Fountain	22.7 m ²
Covered terrace	24.6 m ²
Pool Deck	4.8 m ²
Swimming pool	36 m ²

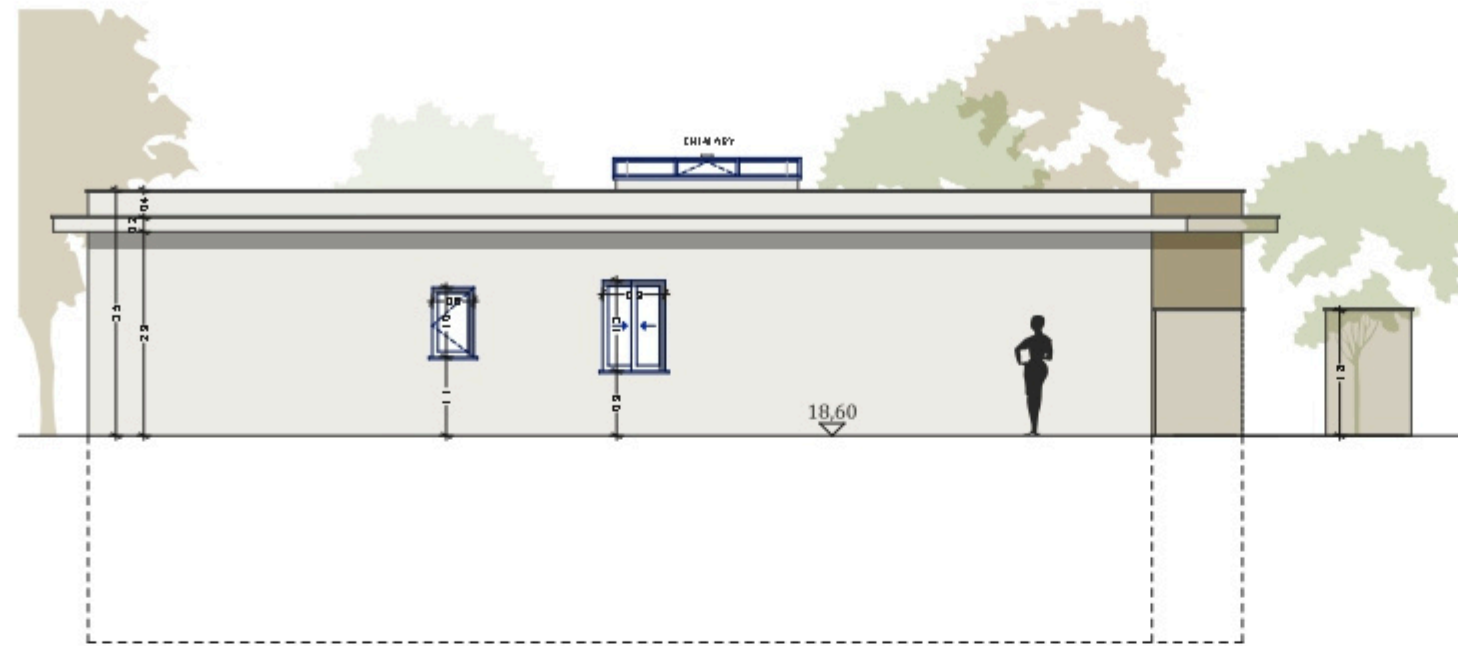
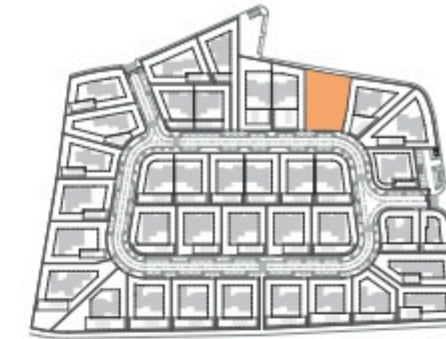
TOTAL AREA 416.9 m²

Plot of Land	1045.7 m ²
Altimetry	18.6

SALES PLAN

VILLA N°21 DOUBLE STOREY

ELEVATIONS



Alcado Norte



Alcado Oeste

Kitchen equipment is not contractual. Their position is indicative. Dimensions and areas are given subject to technical construction and execution requirements. The fallout from false ceilings, soffits and pipes are not systematically shown. The thickness of the insulation will be determined by the technical execution study and therefore the data in this plan are only indicative.

TOTAL INTERIOR LIVING AREA 328.8 m²

GROUND FLOOR 167 m²

Living	40.9 m ²
Dining room	17.7 m ²
Kitchen	14.4 m ²
Office	6.2 m ²
Storeroom	5.1 m ²
Ensuite Bedroom 1	21.2 m ²
Ensuite Bedroom 2	20 m ²
Dressing Ensuite Bedroom 2	3 m ²
Ensuite Bedroom 3	26.7 m ²
Dressing Ensuite Bedroom 3	4.4 m ²
Guest toilet	1.9 m ²
Lobby, Hallway	5.5 m ²

BASEMENT 161.8 m²

Hallway	17.2 m ²
Ensuite Bedroom 4	17.7 m ²
Laundry	6.9 m ²
Gym, Hammam	21.6 m ²
Wine Cellar	10.2 m ²
Garage	88.2 m ²
Technical room swim Pool	20.9 m ²

TOTAL EXTERIOR AREA 88.1 m²

Patio/Fountain	22.7 m ²
Covered terrace	24.6 m ²
Pool Deck	4.8 m ²
Swimming pool	36 m ²

TOTAL AREA 416.9 m²

Plot of Land	1045.7 m ²
Altimetry	18.6