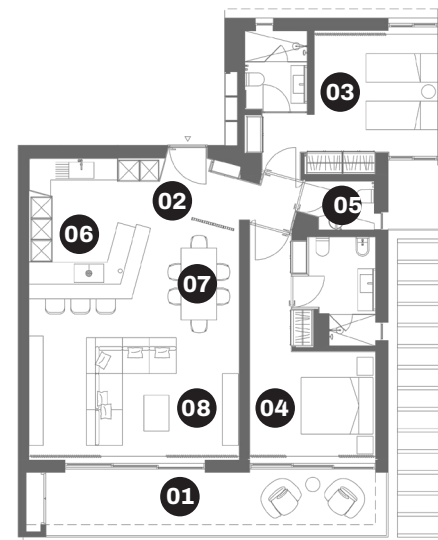


T2 DU

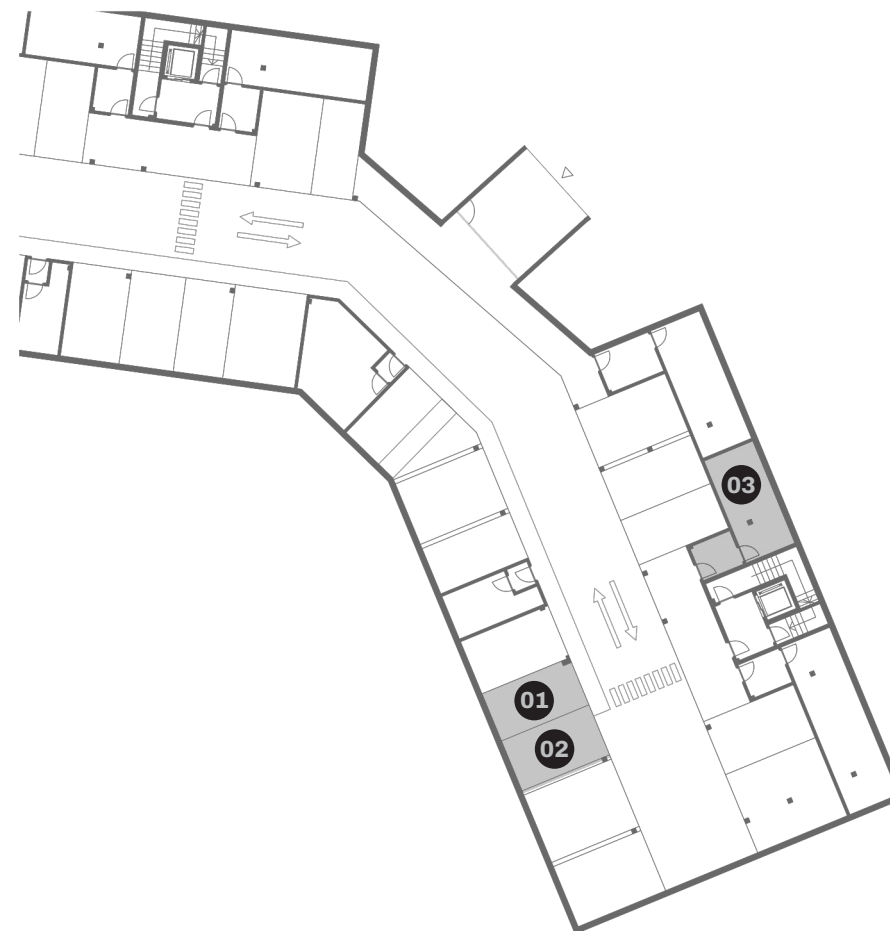
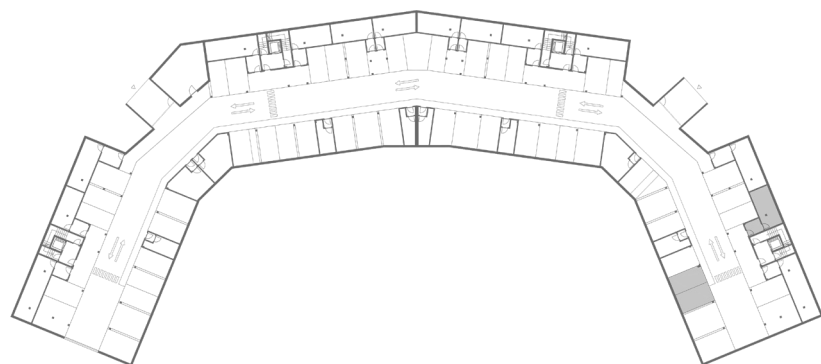
FIRST FLOOR



AREAS	ÁREAS	m ²
Gross Private Area	Área Bruta Privativa	114.90
Net Private Area	Área Privada Habitável	95.50
01 Terrace	Terraço	21.35
02 Hall	Corredor	6.35
03 Suite 1	Suite 1	19.95
04 Suite 2	Suite 2	21.00
05 Wc	Casa de banho	2.75
06 Kitchen	Cozinha	12.90
07 Dining room	Sala de jantar	14.55
08 Living room	Sala de estar	18.00

T2 DU

FIRST FLOOR



AREAS	ÁREAS	m ²
01 Underground parking 1	Estacionamento subterrâneo 1	14.56
02 Underground parking 2	Estacionamento subterrâneo 2	16.10
03 Storage	Arrecadação	17.60